

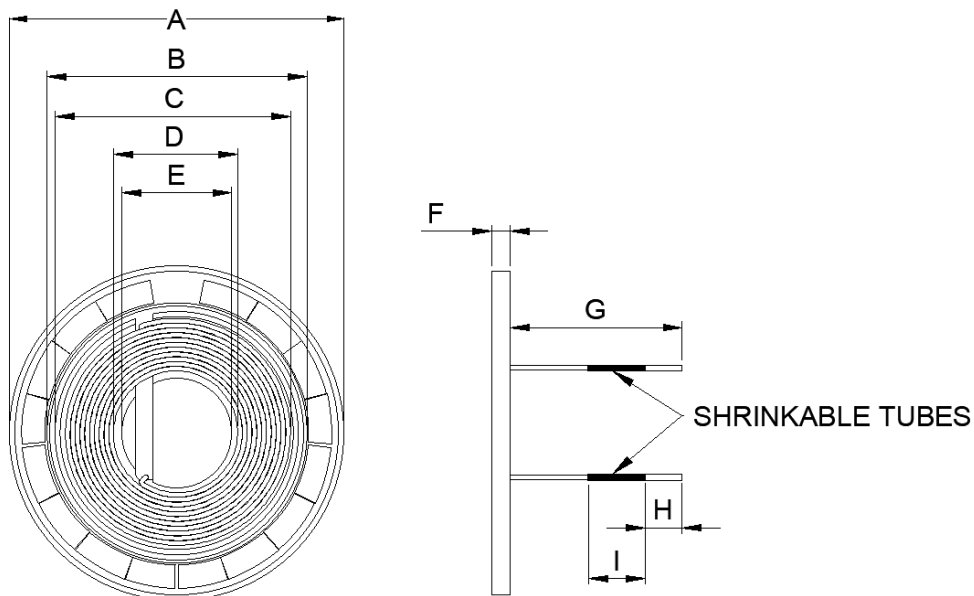
1. Part No. Expression

S C T Q 5 6 0 3 7 R 4 K M P

(a) (b) (c) (d) (e)

- | | |
|---------------------|--------------------|
| (a) Series Code | (d) Tolerance Code |
| (b) Dimension Code | (e) Special Code |
| (c) Inductance Code | |

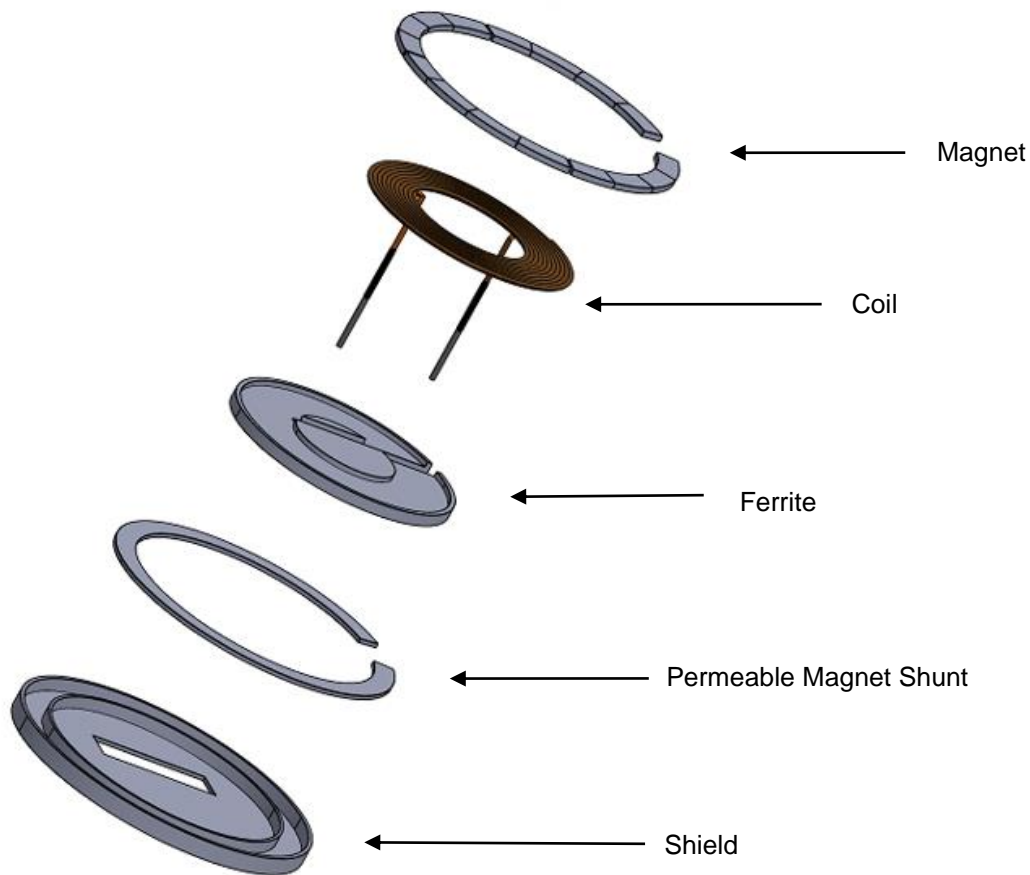
2. Configuration & Dimensions (Unit: mm)



A (Shield)	B (Ferrite)	C (Coil)	D (Coil)	E (Ferrite)
56.36±0.50	42.40 Ref	39.30 Ref	21.50 Ref	19.20 Ref
F	G	H	I	-
3.50 Max	40.00±2.00	5.00±1.00	12.00 Ref	-

NOTE: This design does not include an outer casing. If an integrated outer casing is required, please contact us for customize design.

NOTE: Specifications subject to change without notice. Please check our website for latest information.



3. Schematic



NOTE: Specifications subject to change without notice. Please check our website for latest information.

4. Material List

No.	Description	Part Name
1	Wire	Litz Wire with silk
2	Core	Ferrite
3	Magnet	Magnet Ring
4	Shield	Aluminium Shield
5	Shrinkable Tube	Black Tube
6	Permeable Magnet Shunt	Magnet Shunt Ring

5. General Specifications

- (a) Reliability test for this part meets AEC-Q200 standard.
- (b) Operating Temp.: -40°C to +105°C (including self-temperature rise)
- (c) Storage Temp.: -40°C to +105°C (on board)
- (d) Irms: Based on temperature rise up to 40°C Typ.
- (e) Isat: Based on inductance change up to 10% Max.
- (f) Compliance to WPC MPP Design.
- (g) Storage Condition (Component in its packaging)
 - i) Temperature: Less than 40°C
 - ii) Humidity: Less than 60% RH

6. Electrical Characteristics

Inductance (μ H) $\pm 10\%$	Test Frequency	DCR (m Ω) Max	ACR (m Ω) Typ	Q Factor Typ	Irms (A) Max	Isat (A) Max
7.42	1V/360kHz	70	260	77	5.0	20.0

NOTE: Specifications subject to change without notice. Please check our website for latest information.