

## 1. Part No. Expression

**S C T 5 6 0 3 7 R 4 K M P**

(a) (b) (c) (d) (e)

(a) Series Code

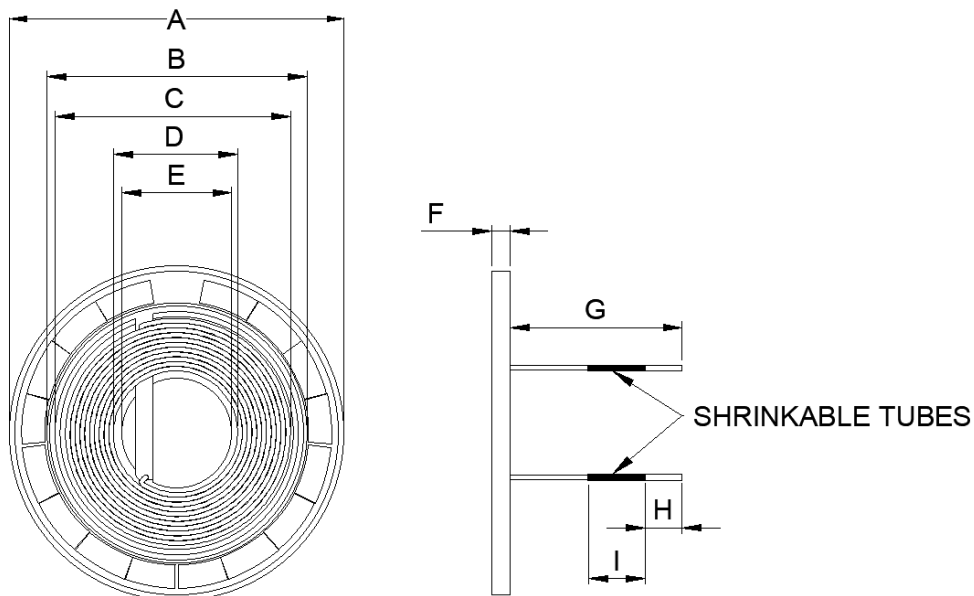
(b) Dimension Code

(c) Inductance Code

(d) Tolerance Code

(e) Special Code

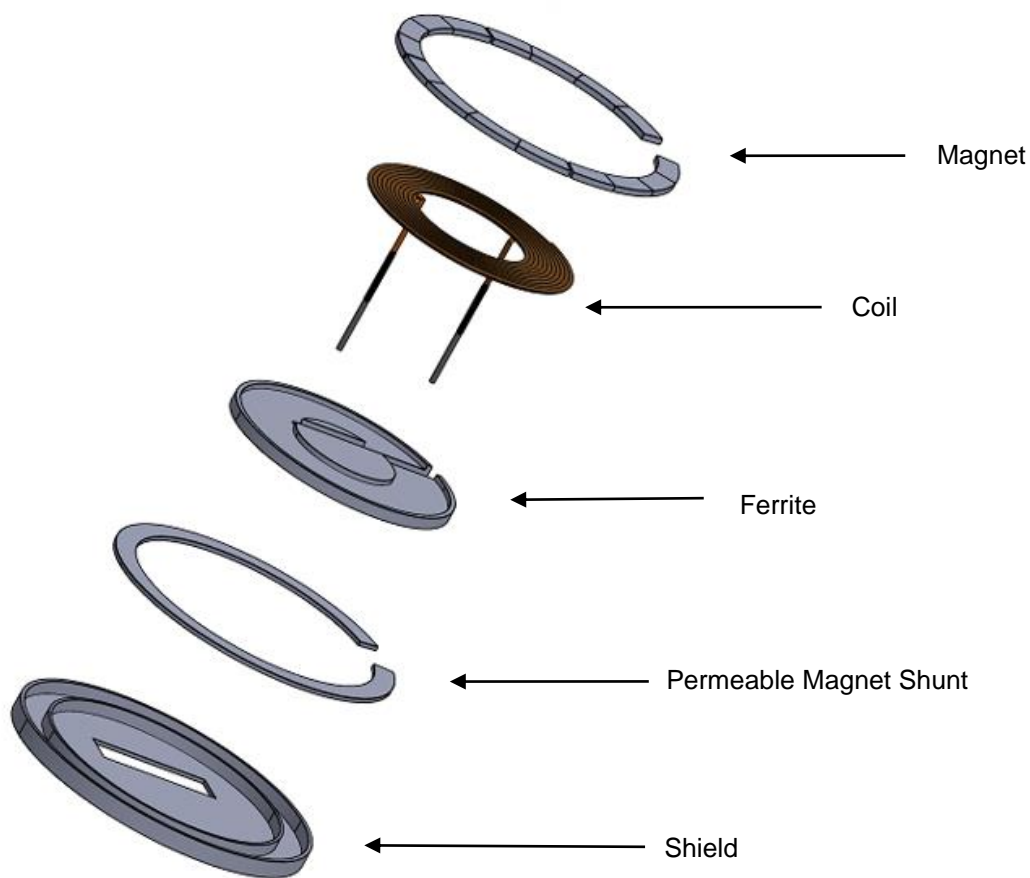
## 2. Configuration & Dimensions (Unit: mm)



A (Shield)	B (Ferrite)	C (Coil)	D (Coil)	E (Ferrite)
56.36±0.50	42.40 Ref	39.30 Ref	21.50 Ref	19.20 Ref
F	G	H	I	-
3.50 Max	40.00±2.00	5.00±1.00	12.00 Ref	-

**NOTE: This design does not include an outer casing. If an integrated outer casing is required, please contact us for customize design.**

NOTE: Specifications subject to change without notice. Please check our website for latest information.



### 3. Schematic



NOTE: Specifications subject to change without notice. Please check our website for latest information.

#### 4. Material List

No.	Description	Part Name
1	Wire	Litz Wire with silk
2	Core	Ferrite
3	Magnet	Magnet Ring
4	Shield	Aluminium Shield
5	Shrinkable Tube	Black Tube
6	Permeable Magnet Shunt	Magnet Shunt Ring

#### 5. General Specifications

- (a) Operating Temp.: -40°C to +105°C (including self-temperature rise)
- (b) Storage Temp.: -40°C to +105°C (on board)
- (c) Irms: Based on temperature rise up to 40°C Typ.
- (d) Isat: Based on inductance change up to 10% Max.
- (e) Compliance to WPC MPP Design.
- (f) Storage Condition (Component in its packaging)
  - i) Temperature: Less than 40°C
  - ii) Humidity: Less than 60% RH

#### 6. Electrical Characteristics

Inductance ( $\mu$ H) $\pm 10\%$	Test Frequency	DCR (m $\Omega$ ) Max	ACR (m $\Omega$ ) Typ	Q Factor Typ	Irms (A) Max	Isat (A) Max
7.42	1V/360KHz	70	260	77	5.0	20.0

NOTE: Specifications subject to change without notice. Please check our website for latest information.