

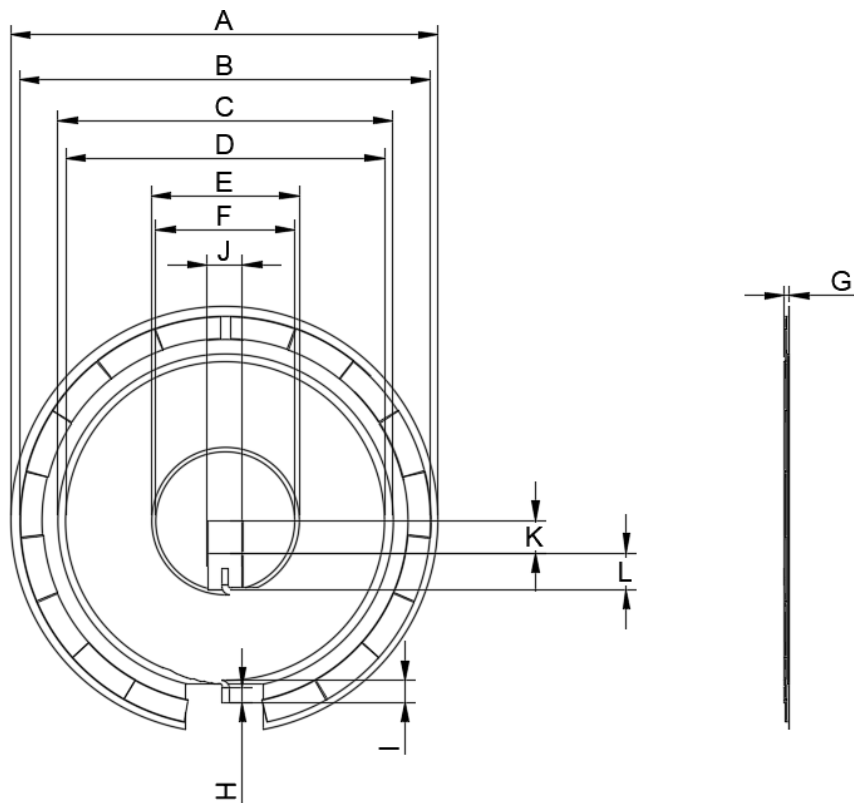
1. Part No. Expression

SCRQ550069R0KMP

(a) (b) (c) (d) (e)

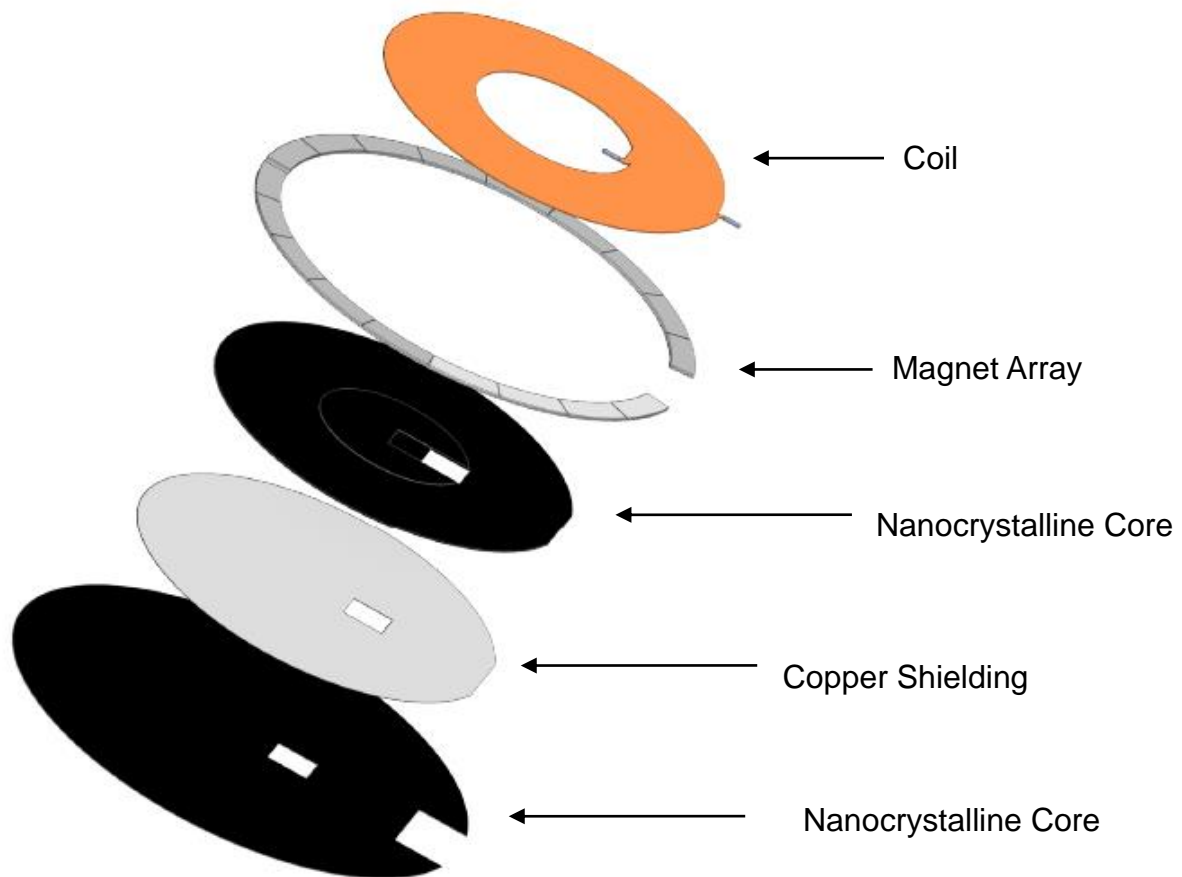
- | | |
|---------------------|--------------------|
| (a) Series Code | (d) Tolerance Code |
| (b) Dimension Code | (e) Special Code |
| (c) Inductance Code | |

2. Configuration & Dimensions (Unit: mm)



A (Core)	B (Magnet)	C (Core)	D (Coil)	E (Coil)	F (Core)
55.00±0.50	52.92 Ref	44.20 Ref	42.00 Ref	19.00 Ref	17.90 Ref
G	H	I	J	K	L
0.65 Max	2.00 Ref	3.50 Ref	4.50 Ref	4.21 Ref	4.85 Ref

NOTE: Specifications subject to change without notice. Please check our website for latest information.



3. Schematic



NOTE: Specifications subject to change without notice. Please check our website for latest information.

4. Material List

No.	Description	Part Name
1	Coil	Enamelled Copper Wire Self-Bonded Wire
2	Core	Nanocrystalline Core
3	Magnet	Magnet Ring
4	Copper Shielding	Copper Foil
5	Core	Nanocrystalline Core

5. General Specifications

- (a) Reliability test for this part meets AEC-Q200 standard.
- (b) Operating Temp.: -40°C to +105°C (including self-temperature rise)
- (c) Storage Temp.: -40°C to +105°C (on board)
- (d) Irms: Based on temperature rise up to 40°C Typ.
- (e) Isat: Based on inductance change up to 10% Max.
- (f) Compliance to WPC MPP Design.
- (g) Storage Condition (Component in its packaging)
 - i) Temperature: Less than 40°C
 - ii) Humidity: Less than 60% RH

6. Electrical Characteristics

Inductance (μ H) $\pm 10\%$	Test Frequency	DCR (m Ω) Typ	Irms (A) Max	Isat (A) Max
9.01	1V/360KHz	320	2.5	10.0

NOTE: Specifications subject to change without notice. Please check our website for latest information.

