

Maximum Operating Voltage

1. Molded Power Inductor- PIA Series

PIAQ Series		
Application	Series Name	Maximum Operating Voltage
Automotive	PIAQ0402SP Series	25V
	PIAQ053T Series PIAQ0502SP Series PIAQ0503S Series	30V
	PIAQ0602S Series PIAQ0603S Series PIAQ0605S Series PIAQ0624S Series	50V
	PIAQ1004S Series PIAQ1005S Series	75V
	PIAQ1205SP Series PIAQ1206SP Series PIAQ1265HT Series PIAQ1265SP Series	80V
	PIAQ1707SP Series	90V
	PIAQ2313SP Series	100V

NOTE: Specifications subject to change without notice. Please check our website for latest information.



PIA Series		
Application	Series Name	Maximum Operating Voltage
Commercial	PIA0402SP Series	25V
	PIA053T Series	30V
	PIA0502SP Series	
	PIA0503S Series	
	PIA0602S Series	50V
	PIA0603S Series	
	PIA0605S Series	
	PIA0624S Series	
	PIA1004S Series	75V
	PIA1005S Series	
	PIA1205SP Series	80V
	PIA1206SP Series	
PIA1265SP Series		
PIA1707SP Series	90V	
PIA2313SP Series	100V	

NOTE: Specifications subject to change without notice. Please check our website for latest information.



2. Molded Power Inductor- PIC Series

PICQ Series		
Application	Series Name	Maximum Operating Voltage
Automotive	PICQ0302H Series PICQ0312H Series PICQ0315H Series PICQ0318H Series	20V
	PICQ0402HP Series PICQ0412HP Series PICQ0415HP Series PICQ0418HP Series	40V
	PICQ0502HP Series PICQ0503H Series PICQ0503HP Series PICQ0512HP Series PICQ0515HP Series PICQ0518HP Series	50V
	PICQ0602H Series PICQ0603H Series PICQ0604H Series PICQ0605H Series PICQ0612H Series PICQ0615H Series PICQ0618H Series PICQ0624H Series	50V
	PICQ1004H Series PICQ1005H Series	75V
	PICQ1205HP Series PICQ1206HP Series PICQ1265HP Series	80V
	PICQ1707HP Series	90V

NOTE: Specifications subject to change without notice. Please check our website for latest information.



PIC Series		
Application	Series Name	Maximum Operating Voltage
Commercial	PIC0302H Series PIC0312H Series PIC0315H Series PIC0318H Series	20V
	PIC0402HP Series PIC0412HP Series	40V
	PIC0502HP Series PIC0503H Series PIC0503HP Series PIC0512HP Series PIC0515HP Series PIC0518HP Series	50V
	PIC0602H Series PIC0603H Series PIC0604H Series PIC0605H Series PIC0612H Series PIC0615H Series PIC0618H Series PIC0624H Series	50V
	PIC0803HP Series	60V
	PIC1003H Series PIC1004H Series PIC1005H Series	75V
	PIC1205HP Series PIC1206HP Series PIC1235HP Series PIC1265HP Series	80V
	PIC1707HP Series	90V
	PIC8040HP Series	60V

NOTE: Specifications subject to change without notice. Please check our website for latest information.



3. Molded Power Inductor- PIF Series

PIFQ Series		
Application	Series Name	Maximum Operating Voltage
Automotive	PIFQ0402A Series	40V (1.2μH below) 15V (1.2μH above)
	PIFQ0402LR Series	15V
	PIFQ0403A Series	40V
	PIFQ0403LR Series	15V
	PIFQ0502A Series	40V
	PIFQ0503A Series	
	PIFQ0505LR Series	15V
	PIFQ0603A Series	40V
	PIFQ0605A Series	
	PIFQ0606LR Series	15V
	PIFQ0702A series	40V
PIFQ0703A series		

PIF Series		
Application	Series Name	Maximum Operating Voltage
Commercial	PIF0402A Series	40V (1.2μH below) 15V (1.2μH above)
	PIF0402LR Series	15V
	PIF0403A Series	40V
	PIF0403LR Series	15V
	PIF0502A Series	40V
	PIF0503A Series	
	PIF0505LR Series	15V
	PIF0603A Series	40V
	PIF0605A Series	
	PIF0606LR Series	15V
	PIF0702A series	40V
PIF0703A series		

NOTE: Specifications subject to change without notice. Please check our website for latest information.



4. Molded Power Inductor- PIM Series

PIMQ Series		
Application	Series Name	Maximum Operating Voltage
Automotive	PIMQ201610A Series	15V
	PIMQ201612A Series	
	PIMQ252010A Series	15V
	PIMQ252012A Series	
	PIMQ322510A Series	15V
	PIMQ322512A Series	
PIMQ322520A Series		

PIM Series		
Application	Series Name	Maximum Operating Voltage
Commercial	PIM201610A Series	15V
	PIM252010A Series	15V
	PIM252012A Series	
	PIM322510A Series	15V
	PIM322512A Series	

5. Molded Power Inductor- PIV Series

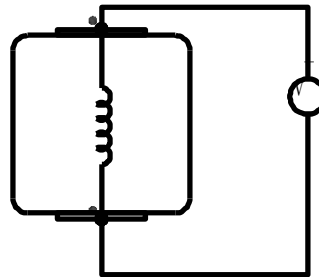
PIVQ Series		
Application	Series Name	Maximum Operating Voltage
Automotive	PIVQ0603S Series	50V
	PIVQ1004S Series	75V

NOTE: Specifications subject to change without notice. Please check our website for latest information.



Notes:

1. Maximum voltage applied across leads (terminals) of the inductor.
2. The application of voltage depends on many factors, over-voltage may cause component failure, high temperature, and burn-out. This voltage is based on a breakdown voltage test and it may not be the same under different circuits. User needs to verify for appropriate usage.
3. This operating voltage is just a reference document. Because it covers a wide range and is a series, it is presented with the lowest voltage. The final standard is based on the issued specification series or individual specifications.

TEST CIRCUITS

NOTE: Specifications subject to change without notice. Please check our website for latest information.