

1. Part No. Expression:

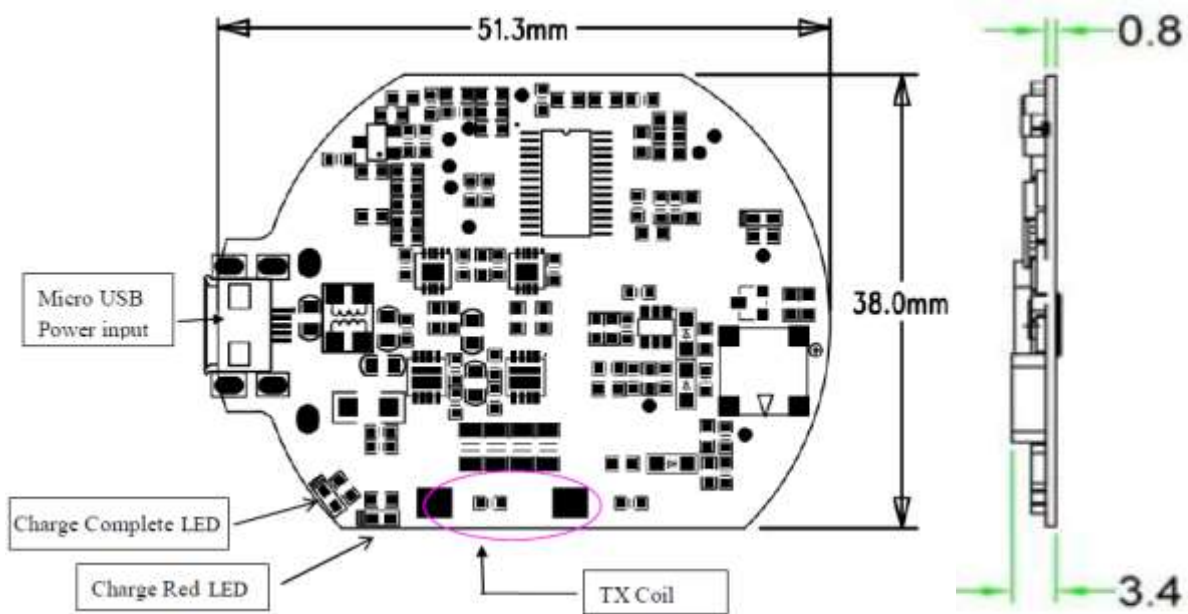
**W M T R 5 9 0 9 0 5 A**

(a) (b)(c) (d) (e)(f)

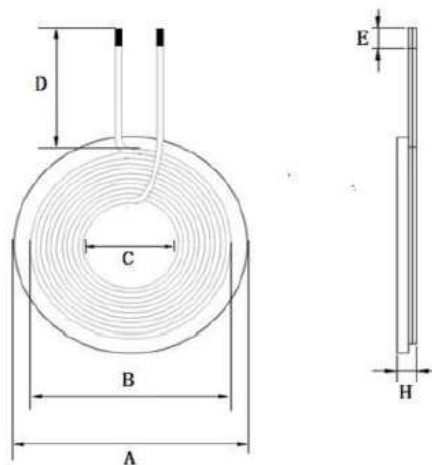
- |                |                      |
|----------------|----------------------|
| a) Series Code | d) Dimension Code    |
| b) Model Code  | e) Power Rating Code |
| c) Shape Code  | f) Standard Code     |

2. Configuration & Dimensions: (Unit:- mm)

- PCB 51.3 mm x 38 mm x 3.4 mm



Coil 50 mm x 4.0 mm



NOTE: Specifications subject to change without notice. Please check our website for latest information.

A	B	C	D	E	H
50.0±0.8	44.0 Max	20.5±0.5	25-30	2.0±1.0	4.0 Max

### 3. General Specifications:

- a) Operating Temp. : 0°C to +40°C
- b) Storage Temp. : -20°C to +70°C
- c) The device, WMTR590905A comply with quick charge (QC 2.0) requirements
- d) Effective charging area: centre of coil aligned to centre of charging pad
  - (i) X-direction tolerance: ±5mm
  - (ii) Y-direction tolerance: ±5mm
- e) Compatible to Qi 1.2 requirements.
- f) Temperature and FOD protection.
- g) Standby Power: <0.3W

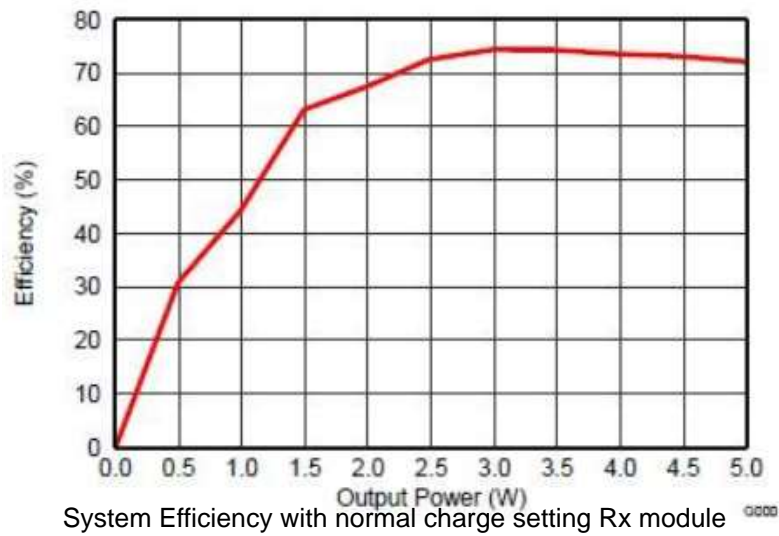
### 4. Electrical Specification

#### 4.1 Module Specification

Description	Remarks	Min.	Typ.	Max.	Unit
Input Voltage	Quick charge setting	8.55	9.0	9.45	V
	Normal charge setting	4.75	5.0	5.25	V
Input Current	Quick charge setting with SWS RX module		1.25	1.35	A
	Normal charge setting with SWS RX module		1.0	1.20	A
Output voltage ripple	Load current at 1A (Tx 9V input)			400	mV
Standby current	No load with SWS Rx module detected			75	mA
	No load without any Rx module		20	40	mA
System Efficiency	Load with SWS 5W Receiver module		70	85	%
System Frequency		110	152	205	KHz
LED Operating Voltage		0		5.0	V
LED Operating Current		0		15.0	mA

\*SWS – Superworld Electronics (S) Pte Ltd

NOTE: Specifications subject to change without notice. Please check our website for latest information.



### 4.2 Coil Specification

	Inductance	Q factor	DCR
Test -Frequency	100Khz/ 1.0V		
	6.3±10.0%	75.0 Min	55.0 Max

### 5. Device Functional Operation:

- Status Indication

	Standby	Power Transfer	Charge Complete	Fault	Dynamic Power Limiting
Blue LED	Off	Off	On	Blink Slow	Off
Red LED	Off	On	Off	Blink Slow	Blink Slow
Remarks: FOD, red LED flicker. Fault, blue LED flicker.					

NOTE: Specifications subject to change without notice. Please check our website for latest information.