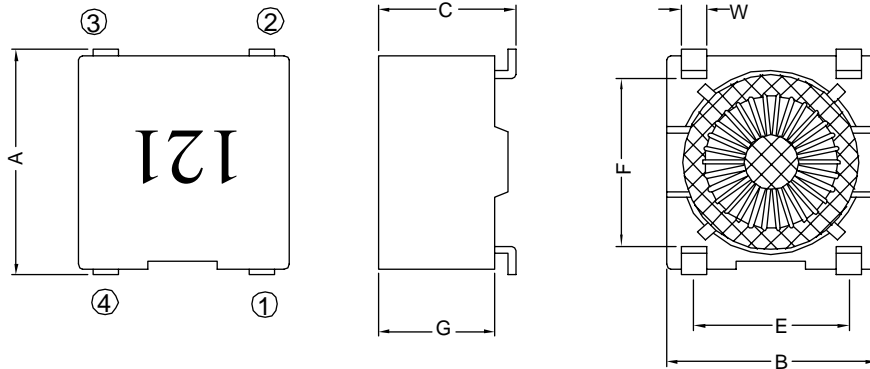


### 1. PART NO. EXPRESSION :

STF 0805 121 Y Z F  
 (a) (b) (c) (d)(e)(f)

- (a) Series code
- (b) Dimension code
- (c) Inductance code : 121 = 120uH
- (d) Tolerance code : Y = ±40%
- (e) Z : Standard part
- (f) F : RoHS Complinat

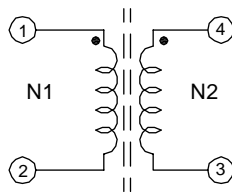
### 2. CONFIGURATION & DIMENSIONS :



Unit:m/m

A	B	C	E	F	G	W
8.80± 0.50	8.50± 0.50	5.50± 0.50	6.22± 0.30	6.45± 0.30	4.70± 0.20	1.0 Typ.

### 3. SCHEMATIC :



"●" : Polarity

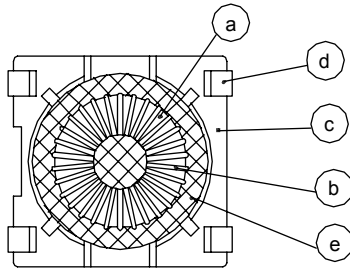


**RoHS Compliant**

NOTE : Specifications subject to change without notice. Please check our website for latest information.

06.01.2015

#### 4. MATERIALS :



- (a) Core
- (b) Wire
- (c) Base
- (d) Adhesive
- (e) Ink

#### 5. GENERAL SPECIFICATION :

- a) Temp. rise : 45° C Max. at rated current
- b) Operating temp. : -40° C to +125° C
- c) Storage condition (component in its packaging)
  - i) Temperature : -10 to 40° C
  - ii) Humidity : 60%
- d) Resistance to solder heat : 260° C.10 secs

#### 6. ELECTRICAL CHARACTERISTICS :

Part No.	Inductance L1 , L2 ( μH )	DC Resistance N1 , N2 ( Ω ) Max.	Rated Current ( A )	Impedance ( Ω ) Min.	Frequency Range ( MHz )
STF0805121YZF	120± 40%	0.025	1.40	200	10 ~ 200
STF0805251YZF	250± 40%	0.030	1.25	400	5 ~ 100
STF0805501YZF	500± 40%	0.060	0.90	800	2 ~ 50
STF0805102YZF	1000± 40%	0.180	0.50	1400	1 ~ 40
STF0805202YZF	2000± 40%	0.250	0.45	2000	0.5 ~ 15
STF0805302YZF	3000± 40%	0.300	0.40	3000	0.5 ~ 10
STF0805402YZF	4000± 40%	0.580	0.30	4000	0.5 ~ 5
STF0805502YZF	5000± 40%	0.630	0.25	5000	0.5 ~ 3

Hi- Pot Test ( N1-N2 ) : 500Vac / 60HZ,3mA / 5S (50KHZ/1V)



**RoHS Compliant**

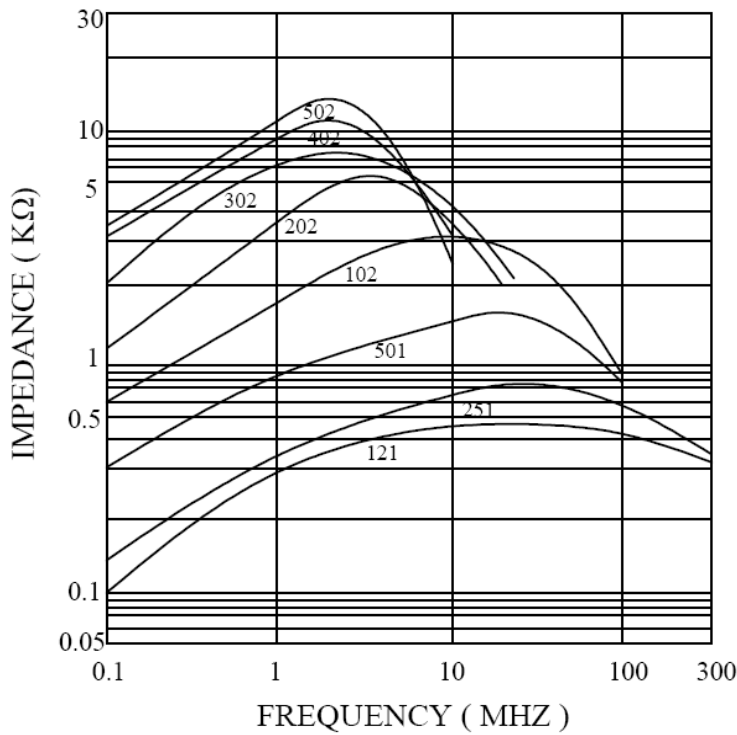
NOTE : Specifications subject to change without notice. Please check our website for latest information.

06.01.2015

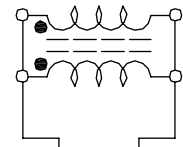


**SUPERWORLD ELECTRONICS (S) PTE LTD**

**7. IMPEDANCE VS. FREQUENCY :**



Measuring Circuit :



RF Impedance Analyzer



**RoHS Compliant**

NOTE : Specifications subject to change without notice. Please check our website for latest information.

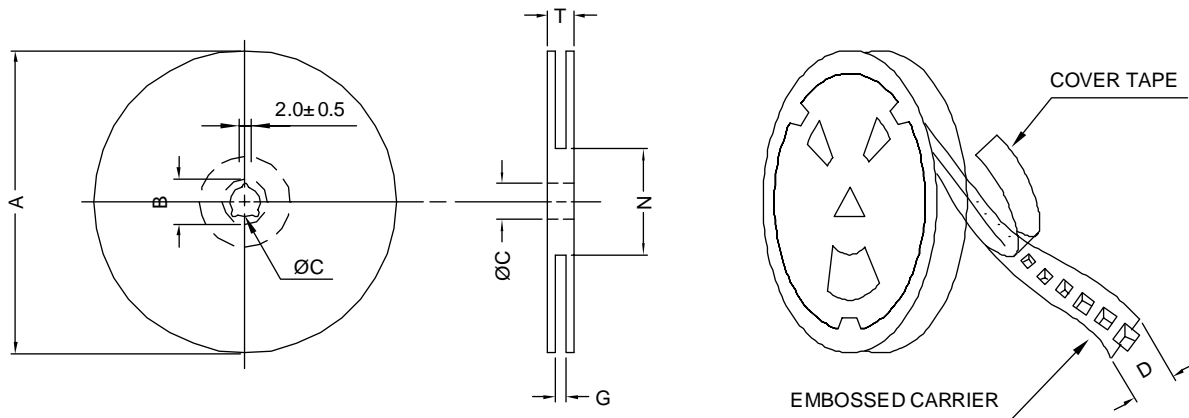
06.01.2015



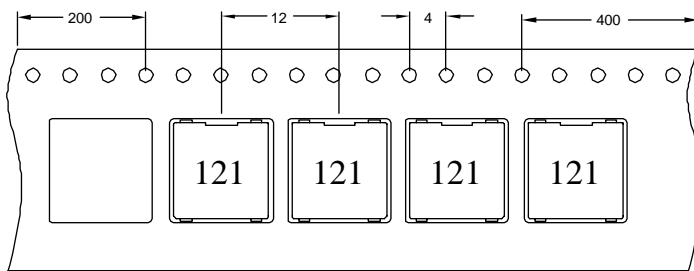
**SUPERWORLD ELECTRONICS (S) PTE LTD**

## 8. PACKAGING INFORMATION :

### ( 1 ) CONFIGURATION



\* CARRIER TAPE WIDTH : D



### ( 2 ) DIMENSIONS

Unit:m/m

STYLE	A	B	C	D	G	N	T
13-24	330	21±0.8	13±0.5	24	26 <sup>+0</sup>	50 <sup>-0</sup>	30.4

### ( 3 ) QTY & G.W. PER PACKAGE

SERIES	INNER : REEL			OUTER : CARTON		
	QTY (PCS)	G.W. (gw)	STYLE	QTY (PCS)	G.W. (Kg)	SIZE (cm)
STF0805	600	510	13-24	2400	5.6	38 x 36.5 x 21



**RoHS Compliant**

NOTE : Specifications subject to change without notice. Please check our website for latest information.

06.01.2015



**SUPERWORLD ELECTRONICS (S) PTE LTD**