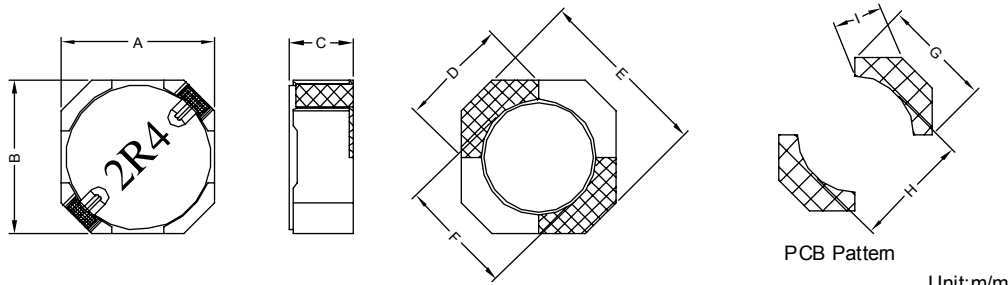


1. PART NO. EXPRESSION :

SSC 1005 2R4 Y Z F
 (a) (b) (c) (d)(e)(f)

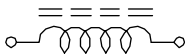
- (a) Series code
- (b) Dimension code
- (c) Inductance code : 2R4 = 2.4uH
- (d) Tolerance code : Y = ± 30%
- (e) Z : Standard part
- (f) F : RoHS Compliant

2. CONFIGURATION & DIMENSIONS :

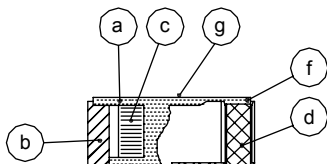


A	B	C	D	E	F	G	H	I
10.00± 0.30	10.00± 0.30	5.00 Max.	6.80 Ref.	11.50 Ref.	7.70 Ref.	7.30 Ref.	7.20 Ref.	3.50 Ref.

3. SCHEMATIC :



4. MATERIALS :



- (a) DR Core
- (b) RI Core
- (c) Wire
- (d) Terminal
- (e) Adhesive
- (f) Adhesive
- (g) Ink

5. GENERAL SPECIFICATION :

- a) Temp. rise : 40° C Typ. at 1rms
- b) ΔL/L0A = 35% Typ. at Isat
- c) Operating temp. : -40° C to +105° C
- d) Storage condition (component in its packaging)
 - i) Temperature : -10 to 40° C
 - ii) Humidity : 60%
- e) Resistance to solder heat : 260° C.10 secs



RoHS Compliant

NOTE : Specifications subject to change without notice. Please check our website for latest information.

29.12.2014



6. ELECTRICAL CHARACTERISTICS :

Part No.	Inductance (μ H)	Test Frequency (Hz)	RDC (m Ω) Max.	Isat (A)	Irms (A)	SRF (MHz) Typ.
SSC10052R4YZF	2.4 \pm 30%	1V / 100K	12.5	11.5	9.6	50.0
SSC10053R6YZF	3.6 \pm 30%	1V / 100K	15.0	9.4	8.2	40.0
SSC10055R0YZF	5.0 \pm 30%	1V / 100K	16.9	8.0	6.8	35.0
SSC10056R6YZF	6.6 \pm 30%	1V / 100K	22.5	7.1	5.7	30.0
SSC10058R5YZF	8.5 \pm 30%	1V / 100K	28.8	6.3	4.8	25.0
SSC1005100YZF	10.0 \pm 30%	1V / 100K	40.0	5.5	4.3	22.0
SSC1005120YZF	12.0 \pm 30%	1V / 100K	42.5	4.9	3.6	20.0
SSC1005150YZF	15.0 \pm 30%	1V / 100K	46.0	4.5	3.4	18.0
SSC1005180YZF	18.0 \pm 30%	1V / 100K	50.0	4.1	3.2	16.0
SSC1005220YZF	22.0 \pm 30%	1V / 100K	56.0	4.0	2.8	15.0
SSC1005270YZF	27.0 \pm 30%	1V / 100K	63.0	3.6	2.7	14.0
SSC1005330YZF	33.0 \pm 30%	1V / 100K	90.0	3.1	2.1	12.0
SSC1005390YZF	39.0 \pm 30%	1V / 100K	105.0	3.0	1.9	11.0
SSC1005470YZF	47.0 \pm 30%	1V / 100K	120.0	2.6	1.8	10.0
SSC1005560YZF	56.0 \pm 30%	1V / 100K	150.0	2.4	1.6	9.0
SSC1005680YZF	68.0 \pm 30%	1V / 100K	175.0	2.1	1.5	8.0
SSC1005820YZF	82.0 \pm 30%	1V / 100K	220.0	2.0	1.3	7.0
SSC1005101YZF	100.0 \pm 30%	1V / 100K	275.0	1.8	1.1	6.0
SSC1005121YZF	120.0 \pm 30%	1V / 100K	312.5	1.6	1.0	5.0



RoHS Compliant

NOTE : Specifications subject to change without notice. Please check our website for latest information.

29.12.2014

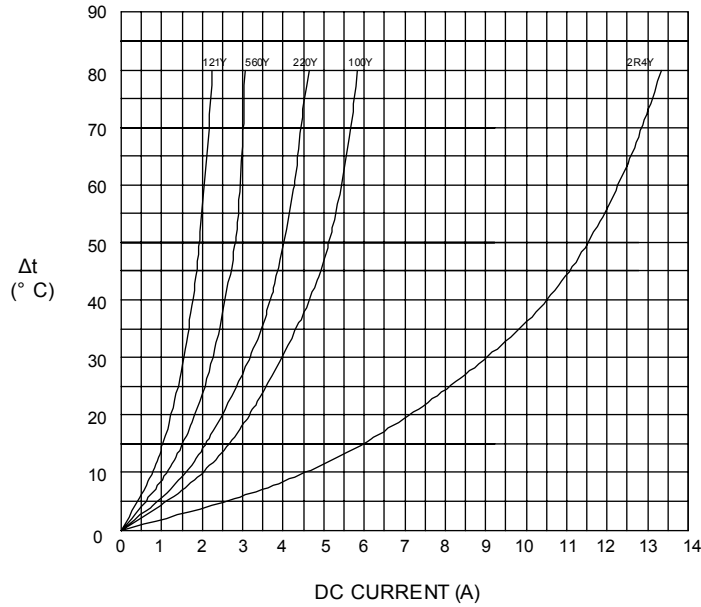


SUPERWORLD ELECTRONICS (S) PTE LTD

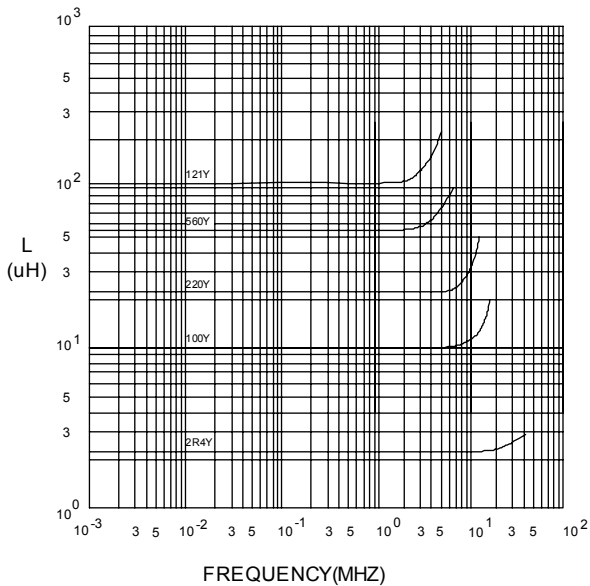
PG. 2

7. CHARACTERISTICS CURVES :

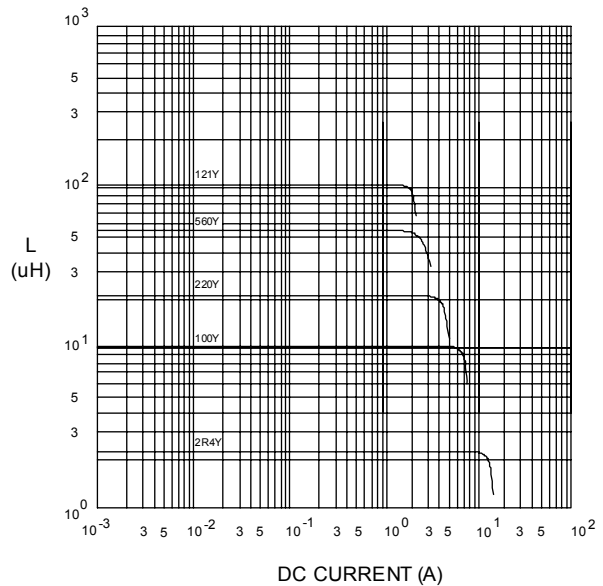
@ TEMP. RISE VS. DC SUPERPOSITION RESPONSE CURVE



@ INDUCTANCE VS. FREQUENCY RESPONSE CURVE



@ INDUCTANCE VS. DC SUPERPOSITION RESPONSE CURVE



NOTE : Specifications subject to change without notice. Please check our website for latest information.



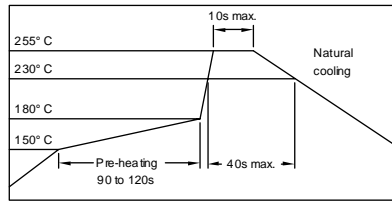
RoHS Compliant

29.12.2014



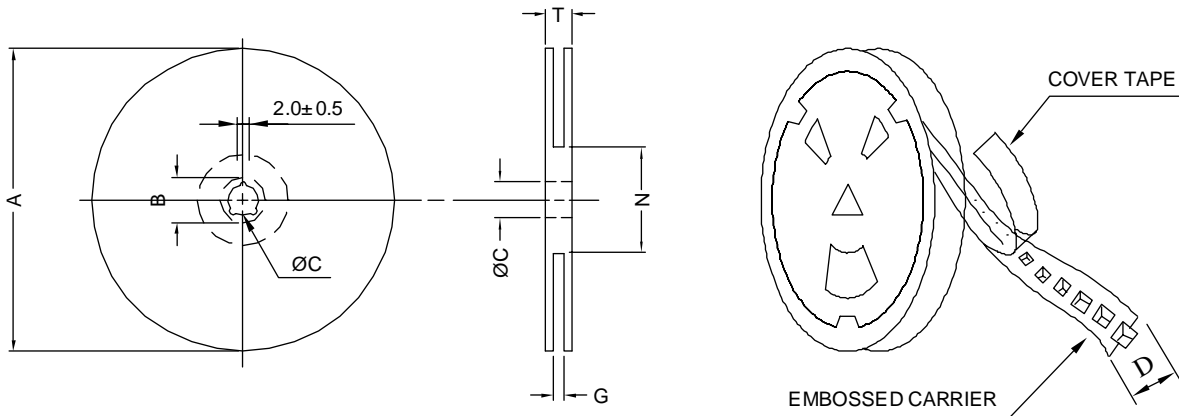
SUPERWORLD ELECTRONICS (S) PTE LTD

RECOMMENDED SOLDERING CONDITIONS REFLOW SOLDERINGS

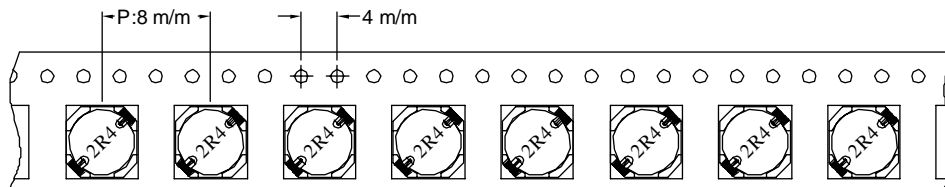


8. PACKAGING INFORMATION :

(1) CONFIGURATION



* CARRIER TAPE WIDTH : D



(2) DIMENSIONS

Unit:m/m

STYLE	A	B	C	D	G	N	T
13-24	330	21±0.8	13	24	26 ⁺⁰	50 ⁻⁰	30.4

(3) QTY & G.W. PER PACKAGE

SERIES	INNER : REEL			OUTER : CARTON		
	QTY (PCS)	G.W. (gw)	STYLE	QTY (PCS)	G.W. (Kg)	SIZE (cm)
SSC1005	600	900	13-24	2400	7.1	40 x 40 x 24



RoHS Compliant

NOTE : Specifications subject to change without notice. Please check our website for latest information.

29.12.2014



SUPERWORLD ELECTRONICS (S) PTE LTD