

### 1. PART NO. EXPRESSION :

SSB 0703 101 MZF  
 (a) (b) (c) (d)(e)(f)

(a) Series code

(b) Dimension code

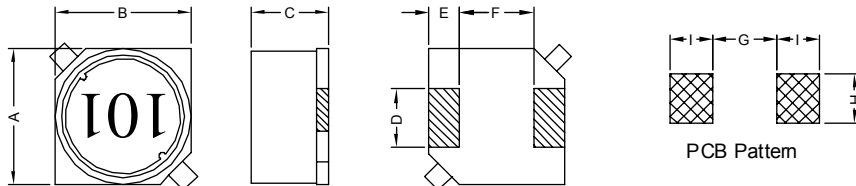
(c) Inductance code : 101 = 100uH

(d) Tolerance code : M = ±20%

(e) Z : Standard part

(f) F : RoHS Compliant

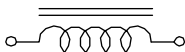
### 2. CONFIGURATION & DIMENSIONS :



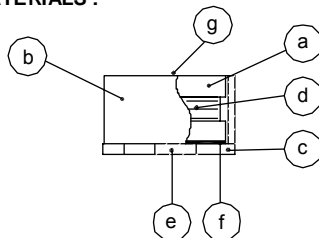
Unit:m/m

| A       | B       | C       | D       | E       | F       | G        | H        | I        |
|---------|---------|---------|---------|---------|---------|----------|----------|----------|
| 7.0±0.3 | 7.0±0.3 | 3.0±0.3 | 2.0±0.2 | 1.5±0.2 | 4.0±0.2 | 3.7 Ref. | 2.2 Ref. | 1.9 Ref. |

### 3. SCHEMATIC :



### 4. MATERIALS :



(a) DR Core

(b) RI Core

(c) Base

(d) Wire

(e) Terminal

(f) Adhesive

(g) Ink

### 5. GENERAL SPECIFICATION :

- a) Temp. rise : 40° C Max.
- b) Rated current : Base on temp. rise &  $\Delta L/L0A = 10\%$  Max.
- c) Operating temp. : -40° C to +85° C
- d) Storage condition (component in its packaging)
  - i) Temperature : -10 to 40° C
  - ii) Humidity : 60%
- e) Resistance to solder heat : 260° C.10 secs



**RoHS Compliant**

NOTE : Specifications subject to change without notice. Please check our website for latest information.

22.12.2014

## 6. ELECTRICAL CHARACTERISTICS :

| Part No.      | Inductance<br>( $\mu$ H) | Test<br>Frequency<br>(Hz) | RDC<br>(m $\Omega$ )<br>Max. | IDC<br>(A)<br>Max. |
|---------------|--------------------------|---------------------------|------------------------------|--------------------|
| SSB07031R0MZF | 1.0 $\pm$ 20%            | 1V / 100K                 | 26                           | 3.25               |
| SSB07031R5MZF | 1.5 $\pm$ 20%            | 1V / 100K                 | 31                           | 3.00               |
| SSB07032R2MZF | 2.2 $\pm$ 20%            | 1V / 100K                 | 37                           | 2.55               |
| SSB07033R3MZF | 3.3 $\pm$ 20%            | 1V / 100K                 | 48                           | 2.40               |
| SSB07034R7MZF | 4.7 $\pm$ 20%            | 1V / 100K                 | 55                           | 2.10               |
| SSB07036R8MZF | 6.8 $\pm$ 20%            | 1V / 100K                 | 75                           | 1.90               |
| SSB0703100MZF | 10.0 $\pm$ 20%           | 1V / 100K                 | 100                          | 1.50               |
| SSB0703120MZF | 12.0 $\pm$ 20%           | 1V / 100K                 | 120                          | 1.45               |
| SSB0703150MZF | 15.0 $\pm$ 20%           | 1V / 100K                 | 130                          | 1.20               |
| SSB0703180MZF | 18.0 $\pm$ 20%           | 1V / 100K                 | 160                          | 1.15               |
| SSB0703220MZF | 22.0 $\pm$ 20%           | 1V / 100K                 | 190                          | 1.05               |
| SSB0703270MZF | 27.0 $\pm$ 20%           | 1V / 100K                 | 240                          | 1.00               |
| SSB0703330MZF | 33.0 $\pm$ 20%           | 1V / 100K                 | 300                          | 0.90               |
| SSB0703390MZF | 39.0 $\pm$ 20%           | 1V / 100K                 | 340                          | 0.80               |
| SSB0703470MZF | 47.0 $\pm$ 20%           | 1V / 100K                 | 400                          | 0.75               |
| SSB0703560MZF | 56.0 $\pm$ 20%           | 1V / 100K                 | 550                          | 0.68               |
| SSB0703680MZF | 68.0 $\pm$ 20%           | 1V / 100K                 | 650                          | 0.65               |
| SSB0703820MZF | 82.0 $\pm$ 20%           | 1V / 100K                 | 720                          | 0.60               |
| SSB0703101MZF | 100.0 $\pm$ 20%          | 1V / 100K                 | 820                          | 0.50               |
| SSB0703121MZF | 120.0 $\pm$ 20%          | 1V / 100K                 | 1100                         | 0.48               |
| SSB0703151MZF | 150.0 $\pm$ 20%          | 1V / 100K                 | 1300                         | 0.45               |
| SSB0703181MZF | 180.0 $\pm$ 20%          | 1V / 100K                 | 1500                         | 0.38               |
| SSB0703221MZF | 220.0 $\pm$ 20%          | 1V / 100K                 | 2100                         | 0.35               |
| SSB0703271MZF | 270.0 $\pm$ 20%          | 1V / 100K                 | 2400                         | 0.30               |
| SSB0703331MZF | 330.0 $\pm$ 20%          | 1V / 100K                 | 3100                         | 0.28               |
| SSB0703391MZF | 390.0 $\pm$ 20%          | 1V / 100K                 | 4100                         | 0.25               |
| SSB0703471MZF | 470.0 $\pm$ 20%          | 1V / 100K                 | 4400                         | 0.23               |
| SSB0703561MZF | 560.0 $\pm$ 20%          | 1V / 100K                 | 5100                         | 0.20               |
| SSB0703681MZF | 680.0 $\pm$ 20%          | 1V / 100K                 | 7100                         | 0.18               |
| SSB0703821MZF | 820.0 $\pm$ 20%          | 1V / 100K                 | 7900                         | 0.17               |
| SSB0703102MZF | 1000.0 $\pm$ 20%         | 1V / 100K                 | 9000                         | 0.16               |



RoHS Compliant

NOTE : Specifications subject to change without notice. Please check our website for latest information.

22.12.2014

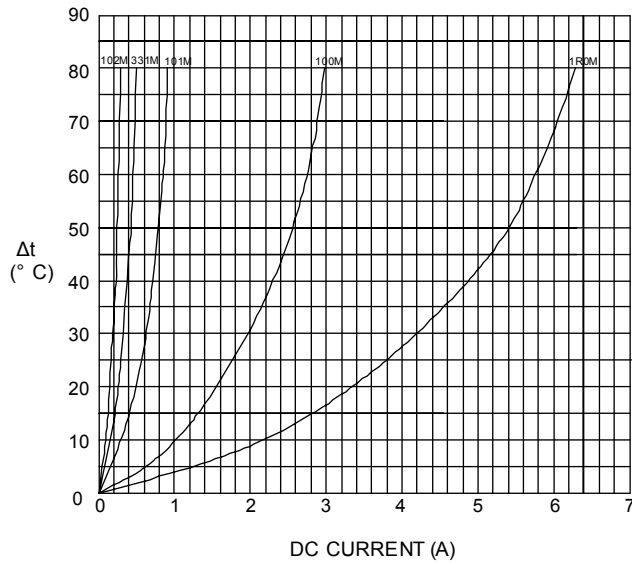


SUPERWORLD ELECTRONICS (S) PTE LTD

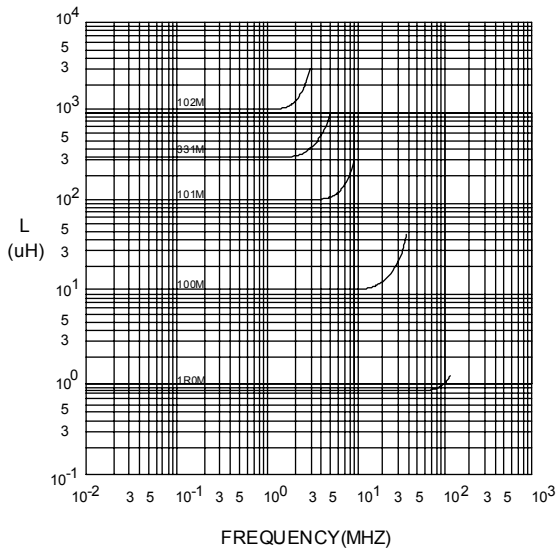
PG. 2

## 7. CHARACTERISTICS CURVES :

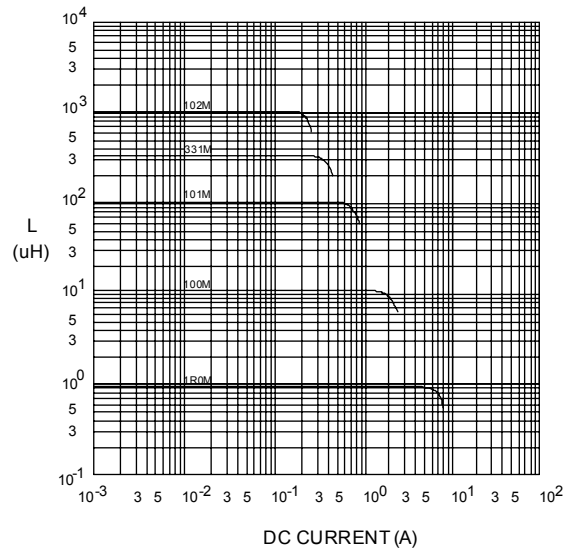
@ TEMP. RISE VS. DC SUPERPOSITION RESPONSE CURVE



@ INDUCTANCE VS. FREQUENCY RESPONSE CURVE



@ INDUCTANCE VS. DC SUPERPOSITION RESPONSE CURVE



NOTE : Specifications subject to change without notice. Please check our website for latest information.



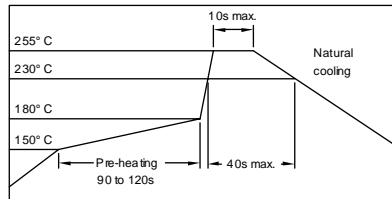
**RoHS Compliant**

22.12.2014



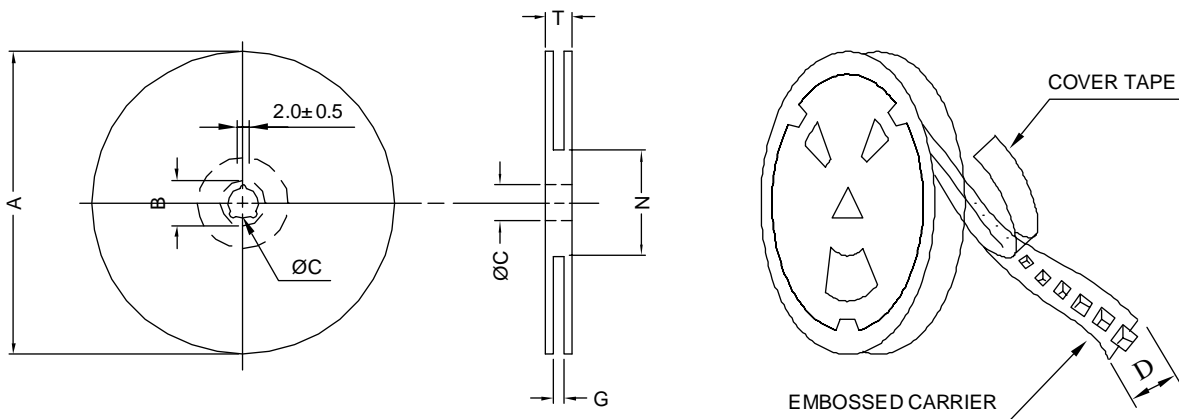
**SUPERWORLD ELECTRONICS (S) PTE LTD**

### RECOMMENDED SOLDERING CONDITIONS REFLOW SOLDERINGS

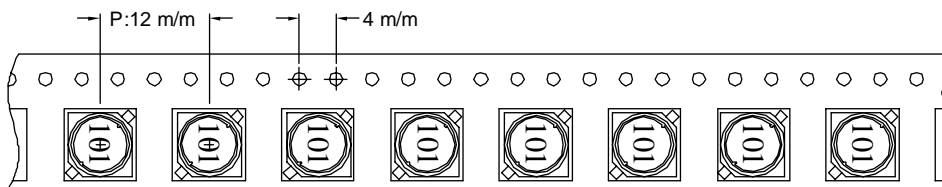


### 8. PACKAGING INFORMATION :

#### ( 1 ) CONFIGURATION



\* CARRIER TAPE WIDTH : D



#### ( 2 ) DIMENSIONS

Unit:m/m

| STYLE | A   | B      | C  | D  | G                | N                | T    |
|-------|-----|--------|----|----|------------------|------------------|------|
| 13-16 | 330 | 21±0.8 | 13 | 16 | 18 <sup>+0</sup> | 50 <sup>-0</sup> | 22.4 |

#### ( 3 ) QTY & G.W. PER PACKAGE

| SERIES  | INNER : REEL |           |       | OUTER : CARTON |           |              |
|---------|--------------|-----------|-------|----------------|-----------|--------------|
|         | QTY (PCS)    | G.W. (gw) | STYLE | QTY (PCS)      | G.W. (Kg) | SIZE (cm)    |
| SSB0703 | 1000         | 630       | 13-16 | 6000           | 7.3       | 40 x 40 x 24 |



**RoHS Compliant**

NOTE : Specifications subject to change without notice. Please check our website for latest information.

22.12.2014



**SUPERWORLD ELECTRONICS (S) PTE LTD**