

1. PART NO. EXPRESSION :

S S B 0 6 0 5 1 0 1 M Z F
 (a) (b) (c) (d)(e)(f)

(a) Series code

(b) Dimension code

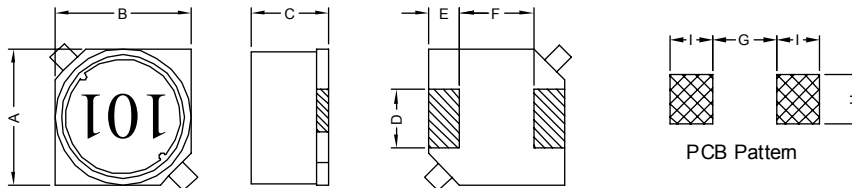
(c) Inductance code : 101 = 100uH

(d) Tolerance code : M = ±20%

(e) Z : Standard part

(f) F : RoHS Compliant

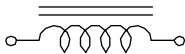
2. CONFIGURATION & DIMENSIONS :



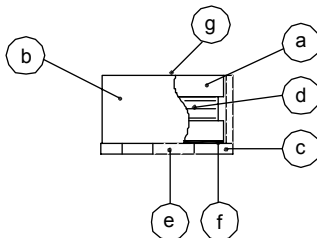
Unit: m/m

A	B	C	D	E	F	G	H	I
6.0±0.3	6.0±0.3	4.9±0.3	2.0±0.2	1.5±0.2	3.0±0.2	2.8 Ref.	2.2 Ref.	1.9 Ref.

3. SCHEMATIC :



4. MATERIALS :



(a) DR Core

(b) RI Core

(c) Base

(d) Wire

(e) Terminal

(f) Adhesive

(g) Ink

5. GENERAL SPECIFICATION :

- a) Temp. rise : 40° C Max.
- b) Rated current : Base on temp. rise & $\Delta L/L0A = 10\%$ Max.
- c) Operating temp. : -40° C to +85° C
- d) Storage condition (component in its packaging)
 - i) Temperature : -10 to 40° C
 - ii) Humidity : 60%
- e) Resistance to solder heat : 260° C.10 secs



RoHS Compliant

NOTE : Specifications subject to change without notice. Please check our website for latest information.

22.12.2014



SUPERWORLD ELECTRONICS (S) PTE LTD

6. ELECTRICAL CHARACTERISTICS :

Part No.	Inductance (μ H)	Test Frequency (Hz)	RDC ($m\Omega$) Max.	IDC (A) Max.
SSB06051R0MZF	1.0 \pm 20%	1V / 100K	23	2.70
SSB06051R5MZF	1.5 \pm 20%	1V / 100K	26	2.30
SSB06052R2MZF	2.2 \pm 20%	1V / 100K	28	1.90
SSB06053R3MZF	3.3 \pm 20%	1V / 100K	35	1.80
SSB06054R7MZF	4.7 \pm 20%	1V / 100K	40	1.40
SSB06056R8MZF	6.8 \pm 20%	1V / 100K	45	1.20
SSB0605100MZF	10.0 \pm 20%	1V / 100K	60	1.00
SSB0605120MZF	12.0 \pm 20%	1V / 100K	65	0.90
SSB0605150MZF	15.0 \pm 20%	1V / 100K	70	0.80
SSB0605180MZF	18.0 \pm 20%	1V / 100K	95	0.70
SSB0605220MZF	22.0 \pm 20%	1V / 100K	110	0.65
SSB0605270MZF	27.0 \pm 20%	1V / 100K	120	0.60
SSB0605330MZF	33.0 \pm 20%	1V / 100K	165	0.55
SSB0605390MZF	39.0 \pm 20%	1V / 100K	180	0.48
SSB0605470MZF	47.0 \pm 20%	1V / 100K	200	0.45
SSB0605560MZF	56.0 \pm 20%	1V / 100K	255	0.40
SSB0605680MZF	68.0 \pm 20%	1V / 100K	285	0.37
SSB0605820MZF	82.0 \pm 20%	1V / 100K	390	0.35
SSB0605101MZF	100.0 \pm 20%	1V / 100K	420	0.30
SSB0605121MZF	120.0 \pm 20%	1V / 100K	470	0.28
SSB0605151MZF	150.0 \pm 20%	1V / 100K	630	0.25
SSB0605181MZF	180.0 \pm 20%	1V / 100K	720	0.22
SSB0605221MZF	220.0 \pm 20%	1V / 100K	820	0.20
SSB0605271MZF	270.0 \pm 20%	1V / 100K	1100	0.18
SSB0605331MZF	330.0 \pm 20%	1V / 100K	1200	0.17
SSB0605391MZF	390.0 \pm 20%	1V / 100K	1700	0.16
SSB0605471MZF	470.0 \pm 20%	1V / 100K	1900	0.14
SSB0605561MZF	560.0 \pm 20%	1V / 100K	2150	0.13
SSB0605681MZF	680.0 \pm 20%	1V / 100K	3300	0.12
SSB0605821MZF	820.0 \pm 20%	1V / 100K	3650	0.11
SSB0605102MZF	1000.0 \pm 20%	1V / 100K	4150	0.10



RoHS Compliant

NOTE : Specifications subject to change without notice. Please check our website for latest information.

22.12.2014

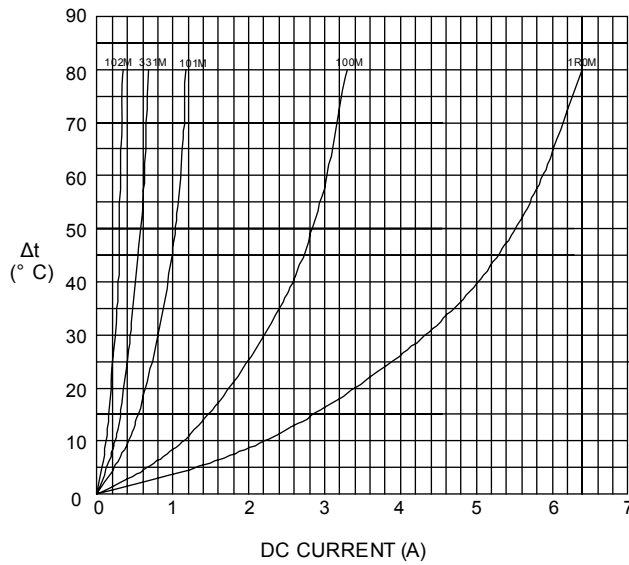


SUPERWORLD ELECTRONICS (S) PTE LTD

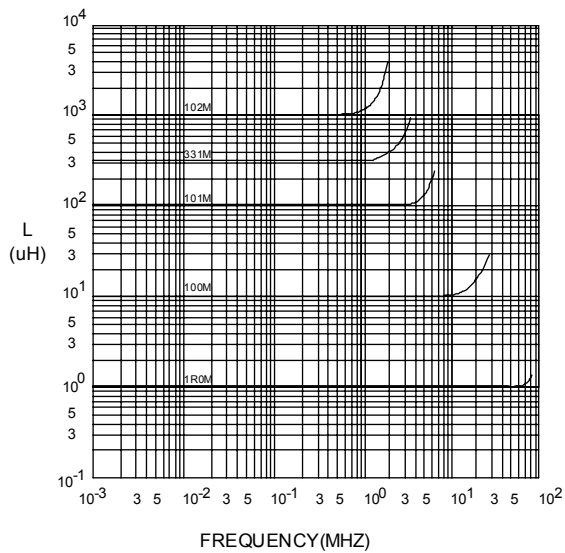
PG. 2

7. CHARACTERISTICS CURVES :

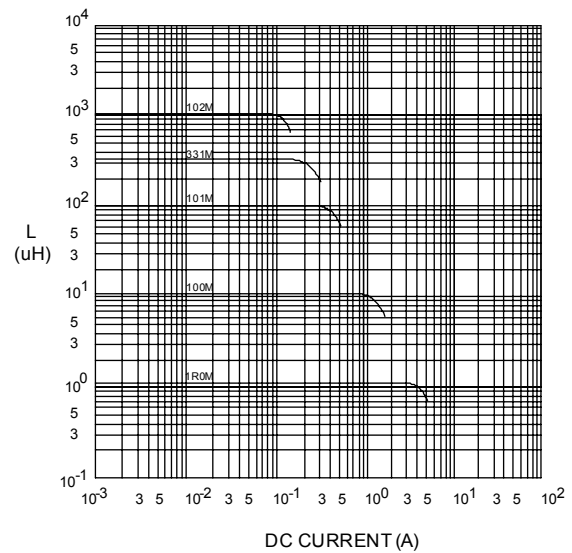
@ TEMP. RISE VS. DC SUPERPOSITION RESPONSE CURVE



@ INDUCTANCE VS. FREQUENCY RESPONSE CURVE



@ INDUCTANCE VS. DC SUPERPOSITION RESPONSE CURVE



NOTE : Specifications subject to change without notice. Please check our website for latest information.



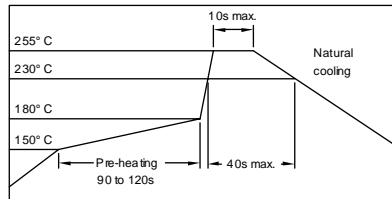
RoHS Compliant

22.12.2014



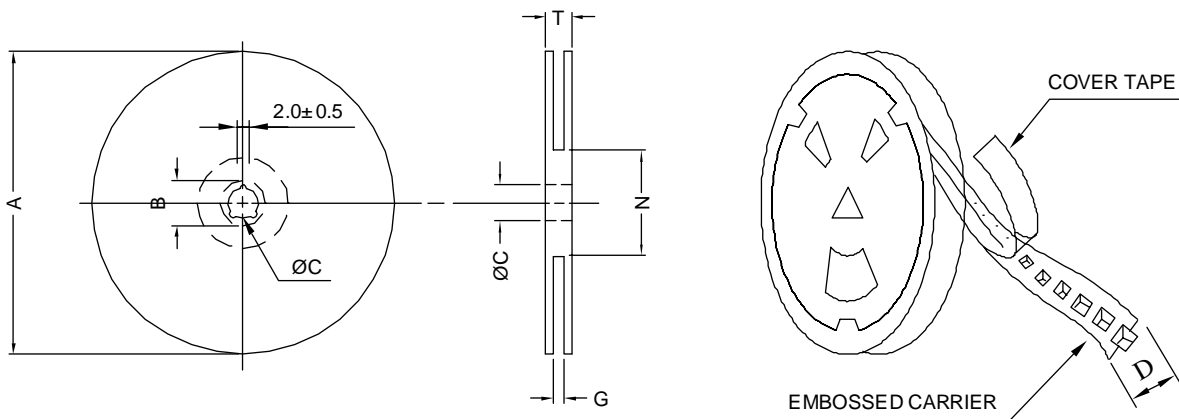
SUPERWORLD ELECTRONICS (S) PTE LTD

RECOMMENDED SOLDERING CONDITIONS REFLOW SOLDERINGS

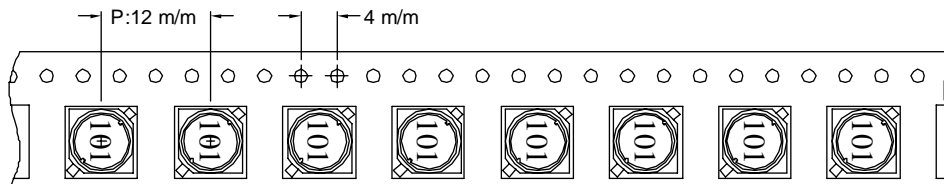


8. PACKAGING INFORMATION :

(1) CONFIGURATION



* CARRIER TAPE WIDTH : D



(2) DIMENSIONS

Unit:m/m

STYLE	A	B	C	D	G	N	T
13-16	330	21±0.8	13	16	18 ⁺⁰	50 ⁻⁰	22.4

(3) QTY & G.W. PER PACKAGE

SERIES	INNER : REEL			OUTER : CARTON		
	QTY (PCS)	G.W. (gw)	STYLE	QTY (PCS)	G.W. (Kg)	SIZE (cm)
SSB0605	1000	1100	13-16	6000	10.1	40 x 40 x 24



RoHS Compliant

NOTE : Specifications subject to change without notice. Please check our website for latest information.

22.12.2014



SUPERWORLD ELECTRONICS (S) PTE LTD