

### 1. PART NO. EXPRESSION :

SSB0604 101 MZF  
 (a) (b) (c) (d)(e)(f)

(a) Series code

(b) Dimension code

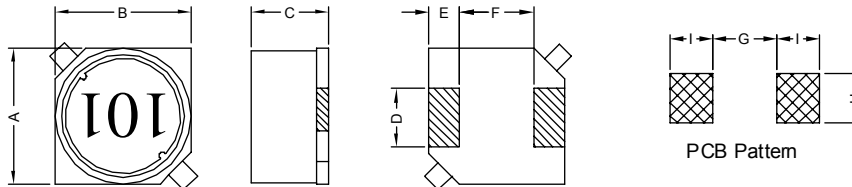
(c) Inductance code : 101 = 100uH

(d) Tolerance code : M = ±20%

(e) Z : Standard part

(f) F : RoHS Compliant

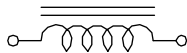
### 2. CONFIGURATION & DIMENSIONS :



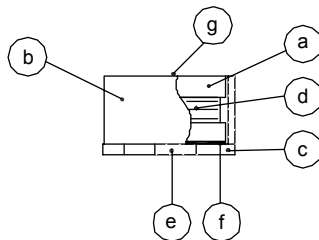
Unit:m/m

A	B	C	D	E	F	G	H	I
6.0±0.3	6.0±0.3	3.9±0.3	2.0±0.2	1.5±0.2	3.0±0.2	2.8 Ref.	2.2 Ref.	1.9 Ref.

### 3. SCHEMATIC :



### 4. MATERIALS :



(a) DR Core

(b) RI Core

(c) Base

(d) Wire

(e) Terminal

(f) Adhesive

(g) Ink

### 5. GENERAL SPECIFICATION :

- a) Temp. rise : 40° C Max.
- b) Rated current : Base on temp. rise & ΔL/L0A = 10% Max.
- c) Operating temp. : -40° C to +85° C
- d) Storage condition (component in its packaging)
  - i) Temperature : -10 to 40° C
  - ii) Humidity : 60%
- e) Resistance to solder heat : 260° C.10 secs



**RoHS Compliant**

NOTE : Specifications subject to change without notice. Please check our website for latest information.

22.12.2014

## 6. ELECTRICAL CHARACTERISTICS :

Part No.	Inductance ( $\mu$ H)	Test Frequency (Hz)	RDC (m $\Omega$ ) Max.	IDC (A) Max.
SSB06041R0MZF	1.0 $\pm$ 20%	1V / 100K	22	2.50
SSB06041R5MZF	1.5 $\pm$ 20%	1V / 100K	25	2.20
SSB06042R2MZF	2.2 $\pm$ 20%	1V / 100K	30	1.90
SSB06043R3MZF	3.3 $\pm$ 20%	1V / 100K	35	1.70
SSB06044R7MZF	4.7 $\pm$ 20%	1V / 100K	50	1.30
SSB06046R8MZF	6.8 $\pm$ 20%	1V / 100K	55	1.10
SSB0604100MZF	10.0 $\pm$ 20%	1V / 100K	65	1.00
SSB0604120MZF	12.0 $\pm$ 20%	1V / 100K	90	0.90
SSB0604150MZF	15.0 $\pm$ 20%	1V / 100K	100	0.80
SSB0604180MZF	18.0 $\pm$ 20%	1V / 100K	110	0.70
SSB0604220MZF	22.0 $\pm$ 20%	1V / 100K	150	0.65
SSB0604270MZF	27.0 $\pm$ 20%	1V / 100K	170	0.60
SSB0604330MZF	33.0 $\pm$ 20%	1V / 100K	220	0.55
SSB0604390MZF	39.0 $\pm$ 20%	1V / 100K	240	0.50
SSB0604470MZF	47.0 $\pm$ 20%	1V / 100K	300	0.47
SSB0604560MZF	56.0 $\pm$ 20%	1V / 100K	340	0.42
SSB0604680MZF	68.0 $\pm$ 20%	1V / 100K	390	0.40
SSB0604820MZF	82.0 $\pm$ 20%	1V / 100K	500	0.35
SSB0604101MZF	100.0 $\pm$ 20%	1V / 100K	570	0.32
SSB0604121MZF	120.0 $\pm$ 20%	1V / 100K	630	0.30
SSB0604151MZF	150.0 $\pm$ 20%	1V / 100K	900	0.27
SSB0604181MZF	180.0 $\pm$ 20%	1V / 100K	990	0.25
SSB0604221MZF	220.0 $\pm$ 20%	1V / 100K	1150	0.22
SSB0604271MZF	270.0 $\pm$ 20%	1V / 100K	1550	0.20
SSB0604331MZF	330.0 $\pm$ 20%	1V / 100K	1760	0.18
SSB0604391MZF	390.0 $\pm$ 20%	1V / 100K	2600	0.17
SSB0604471MZF	470.0 $\pm$ 20%	1V / 100K	3000	0.16
SSB0604561MZF	560.0 $\pm$ 20%	1V / 100K	3300	0.15
SSB0604681MZF	680.0 $\pm$ 20%	1V / 100K	3700	0.13
SSB0604821MZF	820.0 $\pm$ 20%	1V / 100K	4900	0.12
SSB0604102MZF	1000.0 $\pm$ 20%	1V / 100K	5700	0.11



RoHS Compliant

NOTE : Specifications subject to change without notice. Please check our website for latest information.

22.12.2014

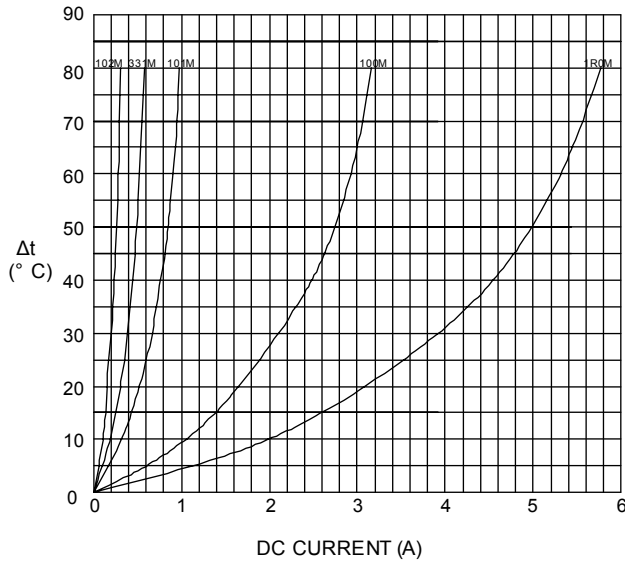


SUPERWORLD ELECTRONICS (S) PTE LTD

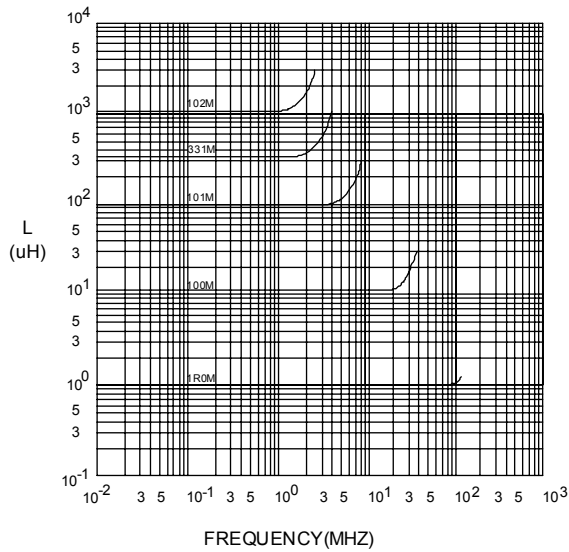
PG. 2

## 7. CHARACTERISTICS CURVES :

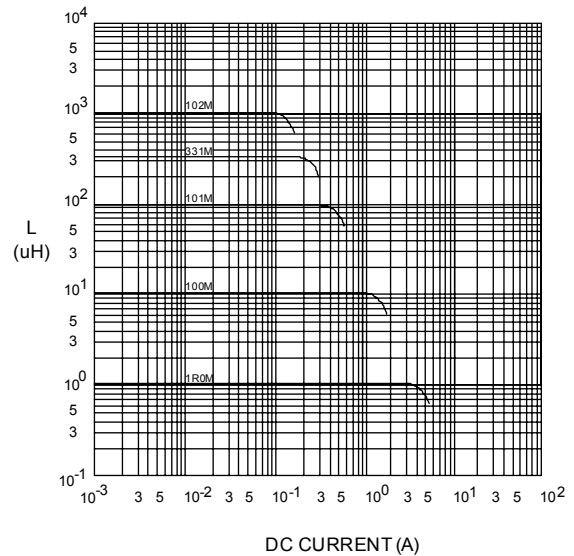
@ TEMP. RISE VS. DC SUPERPOSITION RESPONSE CURVE



@ INDUCTANCE VS. FREQUENCY RESPONSE CURVE



@ INDUCTANCE VS. DC SUPERPOSITION RESPONSE CURVE



NOTE : Specifications subject to change without notice. Please check our website for latest information.



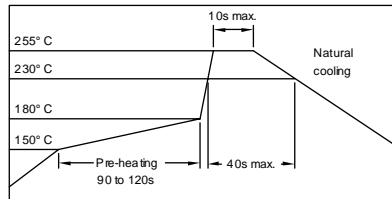
**RoHS Compliant**

22.12.2014



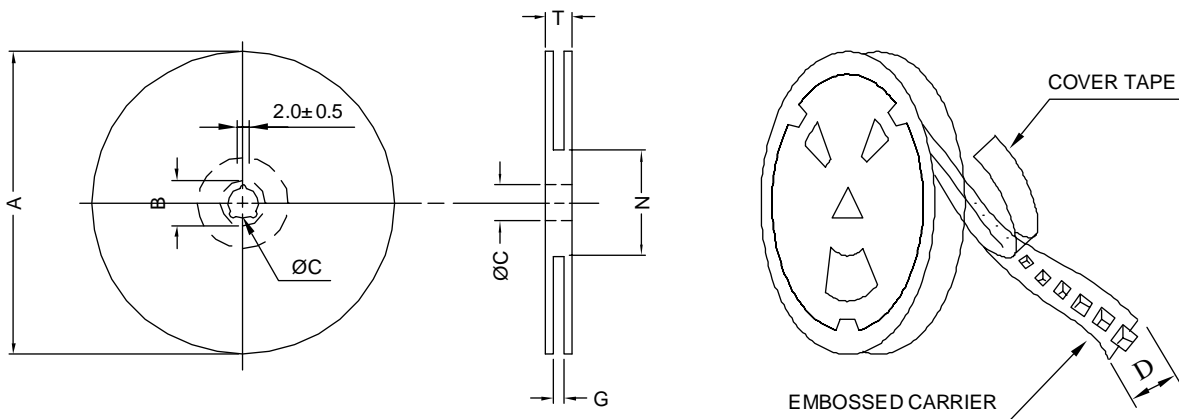
**SUPERWORLD ELECTRONICS (S) PTE LTD**

### RECOMMENDED SOLDERING CONDITIONS REFLOW SOLDERINGS

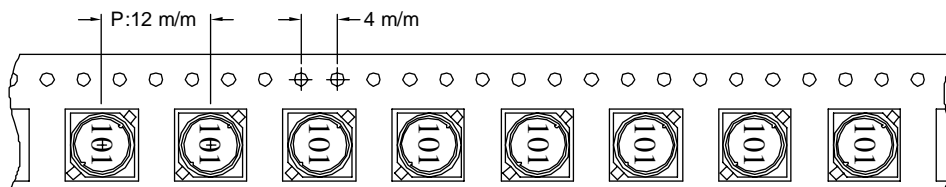


### 8. PACKAGING INFORMATION :

#### ( 1 ) CONFIGURATION



\* CARRIER TAPE WIDTH : D



#### ( 2 ) DIMENSIONS

Unit:m/m

STYLE	A	B	C	D	G	N	T
13-16	330	21±0.8	13	16	18 <sup>+0</sup>	50 <sup>-0</sup>	22.4

#### ( 3 ) QTY & G.W. PER PACKAGE

SERIES	INNER : REEL			OUTER : CARTON		
	QTY (PCS)	G.W. (gw)	STYLE	QTY (PCS)	G.W. (Kg)	SIZE (cm)
SSB0604	1000	950	13-16	6000	9.2	40 x 40 x 24



**RoHS Compliant**

NOTE : Specifications subject to change without notice. Please check our website for latest information.

22.12.2014



**SUPERWORLD ELECTRONICS (S) PTE LTD**