

1. Part No. Expression:

S D C 0 7 0 3 1 0 1 M F

(a) (b) (c) (d)(e)

(a) Series Code

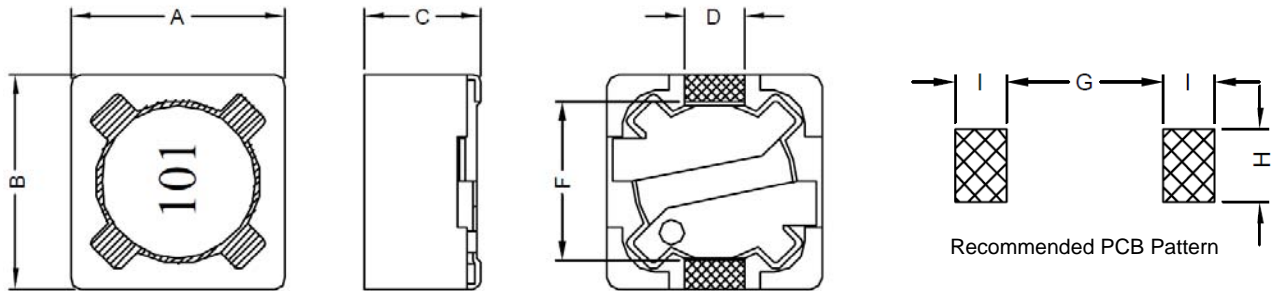
(b) Dimension Code

(c) Inductance Code

(d) Tolerance Code

(e) RoHS Compliant

2. Configuration & Dimensions :



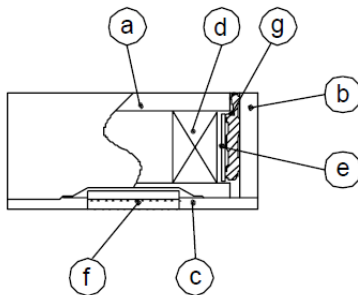
Unit: mm

A	B	C	D	F	G	H	I
7.30 ± 0.20	7.30 ± 0.20	3.40 Max.	1.80 Ref.	5.00 Ref.	4.80 Ref.	2.20 Ref.	1.60 Ref.

3. Schematic



4. Material List



- a) Core
- b) Core
- c) Base
- d) Wire
- e) Tape
- f) Terminal
- g) Adhesive

NOTE: Specifications subject to change without notice. Please check our website for latest information.



5. General Specification

- a) Temp. rise: 40°C Max.
- b) Rated current: Base on Temp. rise & L/L0A = 25% Max.
- c) Operating Temperature: -30°C to 105°C
- d) Storage Condition (component in packaging):
 - i) Temperature: -10°C to 40°C
 - ii) Humidity: 60%
- e) Resistance to solder heat: 260°C, 10secs

6. Electrical Characteristics

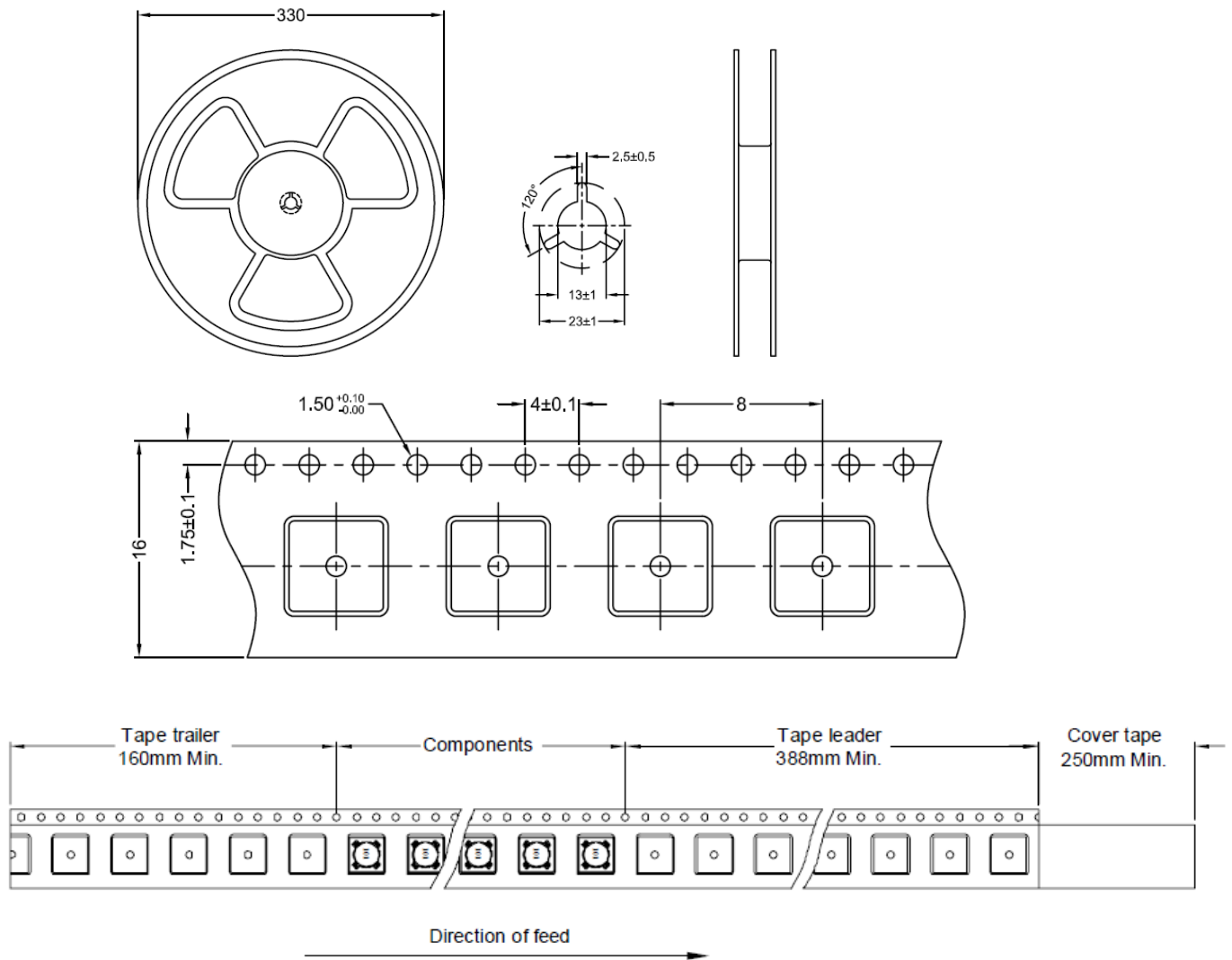
Part Number	Inductance (uH)	Test Frequency (Hz)	RDC (Ω) Max.	IDC (A) Max.
SDC0703100MF	10 ± 20%	0.25V/1K	0.072	1.68
SDC0703120MF	12 ± 20%	0.25V/1K	0.098	1.52
SDC0703150MF	15 ± 20%	0.25V/1K	0.130	1.33
SDC0703180MF	18 ± 20%	0.25V/1K	0.140	1.20
SDC0703220MF	22 ± 20%	0.25V/1K	0.190	1.07
SDC0703270MF	27 ± 20%	0.25V/1K	0.210	0.96
SDC0703330MF	33 ± 20%	0.25V/1K	0.240	0.91
SDC0703390MF	39 ± 20%	0.25V/1K	0.320	0.77
SDC0703470MF	47 ± 20%	0.25V/1K	0.360	0.76
SDC0703560MF	56 ± 20%	0.25V/1K	0.470	0.68
SDC0703680MF	68 ± 20%	0.25V/1K	0.520	0.61
SDC0703820MF	82 ± 20%	0.25V/1K	0.690	0.57
SDC0703101MF	100 ± 20%	0.25V/1K	0.790	0.50
SDC0703121MF	120 ± 20%	0.25V/1K	0.890	0.49
SDC0703151MF	150 ± 20%	0.25V/1K	1.270	0.43
SDC0703181MF	180 ± 20%	0.25V/1K	1.450	0.39
SDC0703221MF	220 ± 20%	0.25V/1K	1.650	0.35
SDC0703271MF	270 ± 20%	0.25V/1K	2.310	0.32
SDC0703331MF	330 ± 20%	0.25V/1K	2.620	0.28
SDC0703391MF	390 ± 20%	0.25V/1K	2.940	0.26
SDC0703471MF	470 ± 20%	0.25V/1K	4.180	0.24
SDC0703561MF	560 ± 20%	0.25V/1K	4.670	0.22
SDC0703681MF	680 ± 20%	0.25V/1K	5.730	0.19

NOTE: Specifications subject to change without notice. Please check our website for latest information.

Part Number	Inductance (uH)	Test Frequency (Hz)	RDC (Ω) Max.	IDC (A) Max.
SDC0703821MF	820 ± 20%	0.25V/1K	6.540	0.18
SDC0703102MF	1000 ± 20%	0.25V/1K	9.440	0.16

7. Packaging Information

7-1 Tape & Reel Dimension



7-2. Quantity & G.W. Per Package

Series	Inner: Reel			Outer: Carton		
	Qty (pcs)	G.W (gw)	Style	Qty (pcs)	G.W (kg)	Size (cm)
SDC0703	1000	1.00	13-16	16000	20	36 x 36 x 40

NOTE: Specifications subject to change without notice. Please check our website for latest information.