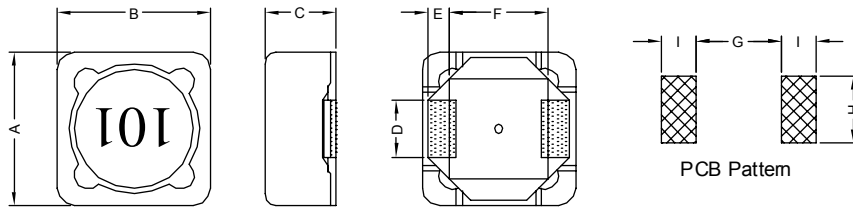


1. PART NO. EXPRESSION :

SDB1203 101 MZ F
 (a) (b) (c) (d)(e)(f)

- (a) Series code
- (b) Dimension code
- (c) Inductance code : 101 = 100.0uH
- (d) Tolerance code : M = ± 20%
- (e) Z : Standard part
- (f) F : RoHS Compliant

2. CONFIGURATION & DIMENSIONS :



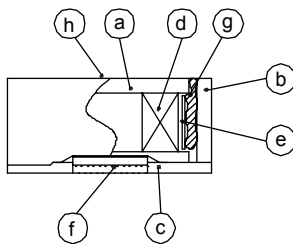
Unit: m/m

A	B	C	D	E	F	G	H	I
12.5±0.3	12.5±0.3	3.90 Max.	5.0±0.2	2.2±0.2	7.6±0.2	7.0 Ref.	5.4 Ref.	2.8 Ref.

3. SCHEMATIC :



4. MATERIALS :



- (a) DR Core
- (b) RI Core
- (c) Base
- (d) Wire
- (e) Tape
- (f) Terminal
- (g) Adhesive
- (h) Ink

5. GENERAL SPECIFICATION :

- a) Temp. rise : 45° C Max. at Rated Current.
- b) Rated Current : Base on Temp. Rise & ΔL/L0A = 20% Max.
- c) Operating temp. : -40° C to +80° C
- d) Storage condition (component in its packaging)
 - i) Temperature : -10 to 40° C
 - ii) Humidity : 60%
- e) Resistance to solder heat : 260° C.10 secs



RoHS Compliant

NOTE : Specifications subject to change without notice. Please check our website for latest information.

25.11.2014



6. ELECTRICAL CHARACTERISTICS :

Part No.	Inductance (μ H)	Test Frequency (Hz)	RDC (m Ω) Max.	IDC (A) Max.
SDB12031R5YZF	1.5 \pm 30%	1V / 100K	13	7.80
SDB12032R2YZF	2.2 \pm 30%	1V / 100K	15	6.80
SDB12033R9YZF	3.9 \pm 30%	1V / 100K	26	5.50
SDB12035R6YZF	5.6 \pm 30%	1V / 100K	32	4.80
SDB12038R2YZF	8.2 \pm 30%	1V / 100K	45	4.10
SDB1203100MZF	10.0 \pm 30%	1V / 100K	50	3.90
SDB1203120MZF	12.0 \pm 20%	1V / 100K	60	3.50
SDB1203150MZF	15.0 \pm 20%	1V / 100K	80	3.00
SDB1203180MZF	18.0 \pm 20%	1V / 100K	100	2.70
SDB1203220MZF	22.0 \pm 20%	1V / 100K	110	2.50
SDB1203270MZF	27.0 \pm 20%	1V / 100K	130	2.20
SDB1203330MZF	33.0 \pm 20%	1V / 100K	160	2.10
SDB1203390MZF	39.0 \pm 20%	1V / 100K	180	2.00
SDB1203470MZF	47.0 \pm 20%	1V / 100K	220	1.80
SDB1203560MZF	56.0 \pm 20%	1V / 100K	260	1.60
SDB1203680MZF	68.0 \pm 20%	1V / 100K	310	1.50
SDB1203820MZF	82.0 \pm 20%	1V / 100K	360	1.40
SDB1203101MZF	100.0 \pm 20%	1V / 100K	400	1.30
SDB1203121MZF	120.0 \pm 20%	1V / 100K	530	1.10
SDB1203151MZF	150.0 \pm 20%	1V / 100K	610	1.00
SDB1203181MZF	180.0 \pm 20%	1V / 100K	800	0.90
SDB1203221MZF	220.0 \pm 20%	1V / 100K	970	0.85
SDB1203271MZF	270.0 \pm 20%	1V / 100K	1200	0.75
SDB1203331MZF	330.0 \pm 20%	1V / 100K	1350	0.70



RoHS Compliant

NOTE : Specifications subject to change without notice. Please check our website for latest information.

25.11.2014

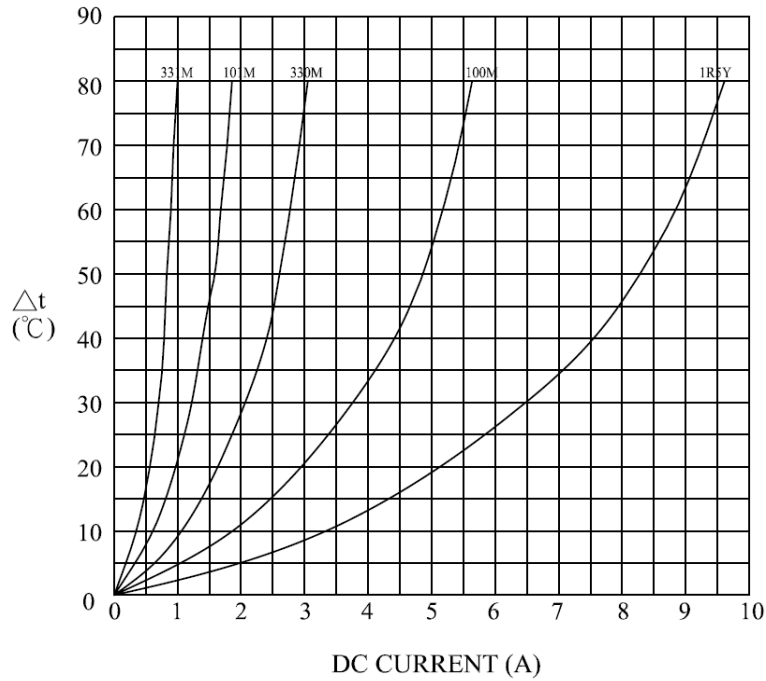


SUPERWORLD ELECTRONICS (S) PTE LTD

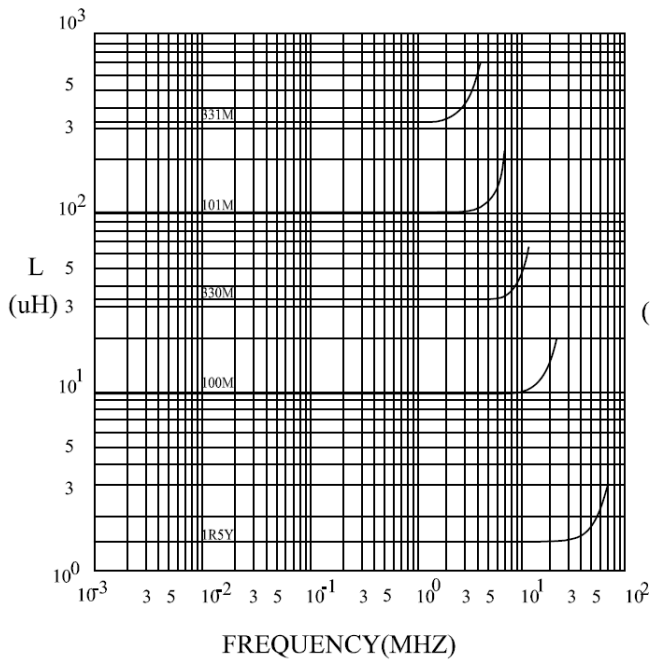
PG. 2

7. CHARACTERISTICS CURVES :

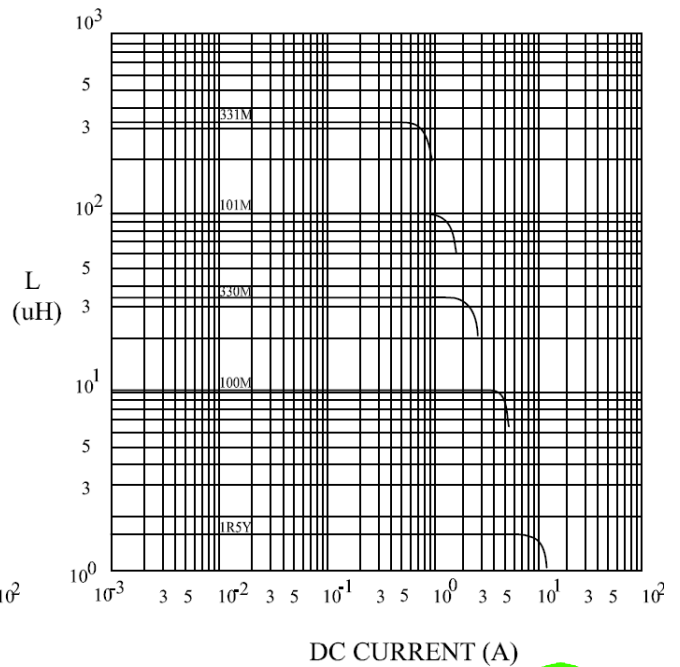
@ TEMP. RISE VS. DC SUPERPOSITION RESPONSE CURVE



@ INDUCTANCE VS. FREQUENCY RESPONSE CURVE



@ INDUCTANCE VS. DC SUPERPOSITION RESPONSE CURVE



RoHS Compliant

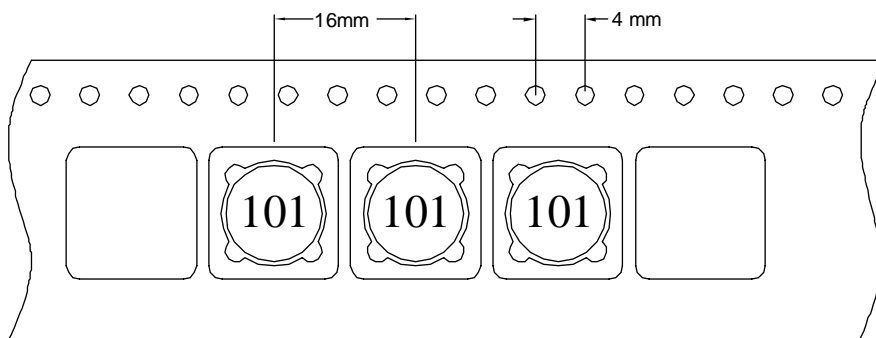
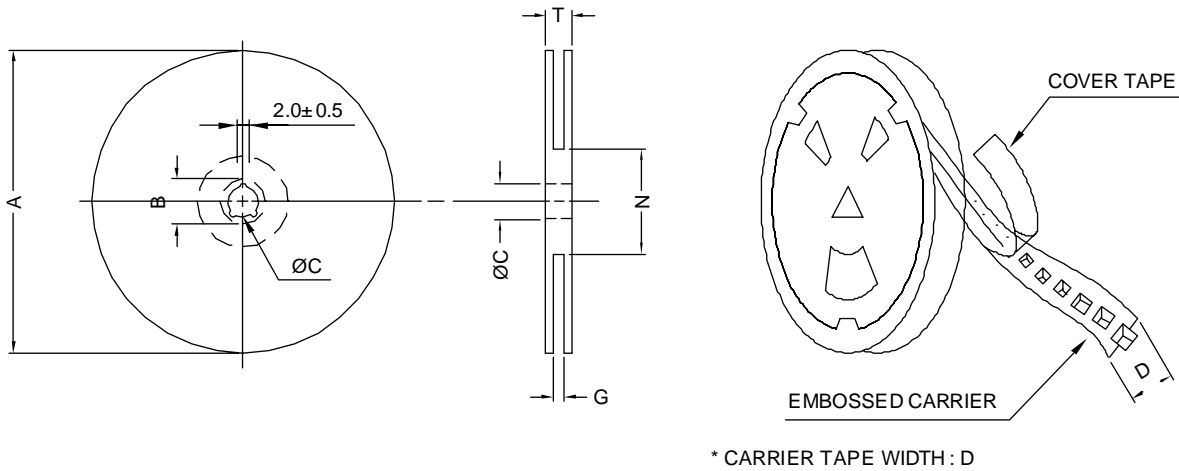
NOTE : Specifications subject to change without notice. Please check our website for latest information.

25.11.2014



8. PACKAGING INFORMATION :

(1) CONFIGURATION



(2) DIMENSIONS

Unit:m/m

STYLE	A	B	C	D	G	N	T
13-24	330	21±0.8	13±0.5	24	26 ⁺⁰	50 ⁻⁰	30.4

(3) QTY & G.W. PER PACKAGE

SERIES	INNER : REEL			OUTER : CARTON		
	QTY (PCS)	G.W. (gw)	STYLE	QTY (PCS)	G.W. (Kg)	SIZE (cm)
SDB1203	800	2200	13-24	3200	12.3	40 x 40 x 24



RoHS Compliant

NOTE : Specifications subject to change without notice. Please check our website for latest information.

25.11.2014



SUPERWORLD ELECTRONICS (S) PTE LTD