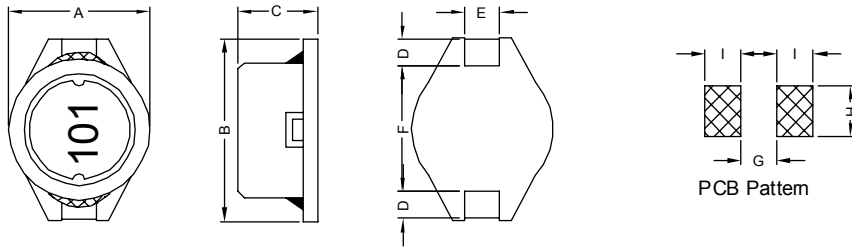


### 1. PART NO. EXPRESSION :

SDB0805101MZ F  
 (a) (b) (c) (d)(e)(f)

- (a) Series code
- (b) Dimension code
- (c) Inductance code : 101 = 100uH
- (d) Tolerance code : M = ±20%
- (e) Z : Standard part
- (f) F : RoHS Compliant

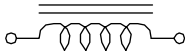
### 2. CONFIGURATION & DIMENSIONS :



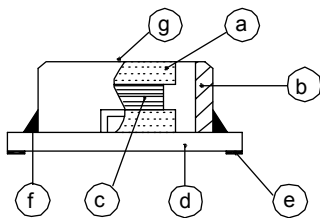
Unit: m/m

A	B	C	D	E	F	G	H	I
8.00± 0.20	10.50± 0.20	4.50± 0.30	2.10± 0.20	2.00± 0.20	6.00± 0.30	5.70 Ref.	2.20 Ref.	2.40 Ref.

### 3. SCHEMATIC :



### 4. MATERIALS :



- (a) DR Core
- (b) RI Core
- (c) Wire
- (d) Base
- (e) Terminal
- (f) Adhesive
- (g) Ink

### 5. GENERAL SPECIFICATION :

- a) Temp. rise : 40° C Max. at Rated Current.
- b) Rated current : Base on temp. rise  $\Delta L/L0A = 10\%$  Max.
- c) Operating temp. : -40° C to +85° C
- d) Storage condition (component in its packaging)
  - i) Temperature : -10 to 40° C
  - ii) Humidity : 60%
- e) Resistance to solder heat : 260° C.10 secs



**RoHS Compliant**

NOTE : Specifications subject to change without notice. Please check our website for latest information.

25.11.2014



**SUPERWORLD ELECTRONICS (S) PTE LTD**

## 6. ELECTRICAL CHARACTERISTICS :

Part No.	Inductance ( $\mu$ H)	Q Ref.	Test Freq. ( Hz )	SRF ( MHz ) Typ.	RDC ( m $\Omega$ ) Max.	IDC ( A )
SDB08052R2MZF	2.2 $\pm$ 20%	60	1V/100K	75.0	40	2.50
SDB08053R9MZF	3.9 $\pm$ 20%	60	1V/100K	50.0	55	2.10
SDB08055R6MZF	5.6 $\pm$ 20%	60	1V/100K	40.0	65	1.95
SDB08058R2MZF	8.2 $\pm$ 20%	60	1V/100K	32.0	80	1.75
SDB0805100MZF	10.0 $\pm$ 20%	50	1V/100K	28.0	100	1.50
SDB0805120MZF	12.0 $\pm$ 20%	50	1V/100K	24.0	120	1.40
SDB0805150MZF	15.0 $\pm$ 20%	50	1V/100K	22.0	140	1.30
SDB0805180LZF	18.0 $\pm$ 15%	50	1V/100K	19.0	160	1.20
SDB0805220LZF	22.0 $\pm$ 15%	50	1V/100K	17.0	180	1.10
SDB0805270LZF	27.0 $\pm$ 15%	50	1V/100K	15.5	200	1.00
SDB0805330LZF	33.0 $\pm$ 15%	60	1V/100K	13.5	240	0.92
SDB0805390LZF	39.0 $\pm$ 15%	60	1V/100K	12.0	260	0.84
SDB0805470LZF	47.0 $\pm$ 15%	60	1V/100K	10.5	280	0.75
SDB0805560KZF	56.0 $\pm$ 10%	60	1V/100K	9.5	380	0.68
SDB0805680KZF	68.0 $\pm$ 10%	70	1V/100K	9.0	440	0.60
SDB0805820KZF	82.0 $\pm$ 10%	70	1V/100K	8.5	550	0.54
SDB0805101KZF	100.0 $\pm$ 10%	70	1V/100K	7.5	600	0.50
SDB0805121KZF	120.0 $\pm$ 10%	70	1V/100K	7.0	750	0.45
SDB0805151KZF	150.0 $\pm$ 10%	70	1V/100K	6.5	900	0.40
SDB0805181KZF	180.0 $\pm$ 10%	70	1V/100K	4.8	1050	0.35
SDB0805221KZF	220.0 $\pm$ 10%	80	1V/100K	4.5	1180	0.30
SDB0805271KZF	270.0 $\pm$ 10%	90	1V/100K	4.2	1400	0.27
SDB0805331KZF	330.0 $\pm$ 10%	90	1V/100K	3.8	1800	0.24
SDB0805391KZF	390.0 $\pm$ 10%	80	1V/100K	3.6	2100	0.22
SDB0805471KZF	470.0 $\pm$ 10%	80	1V/100K	3.5	2250	0.20
SDB0805561KZF	560.0 $\pm$ 10%	100	1V/100K	3.0	3000	0.18
SDB0805681KZF	680.0 $\pm$ 10%	90	1V/100K	2.8	3400	0.17
SDB0805821KZF	820.0 $\pm$ 10%	90	1V/100K	2.5	4000	0.16
SDB0805102KZF	1000.0 $\pm$ 10%	90	1V/100K	2.2	5000	0.15



RoHS Compliant

NOTE : Specifications subject to change without notice. Please check our website for latest information.

25.11.2014

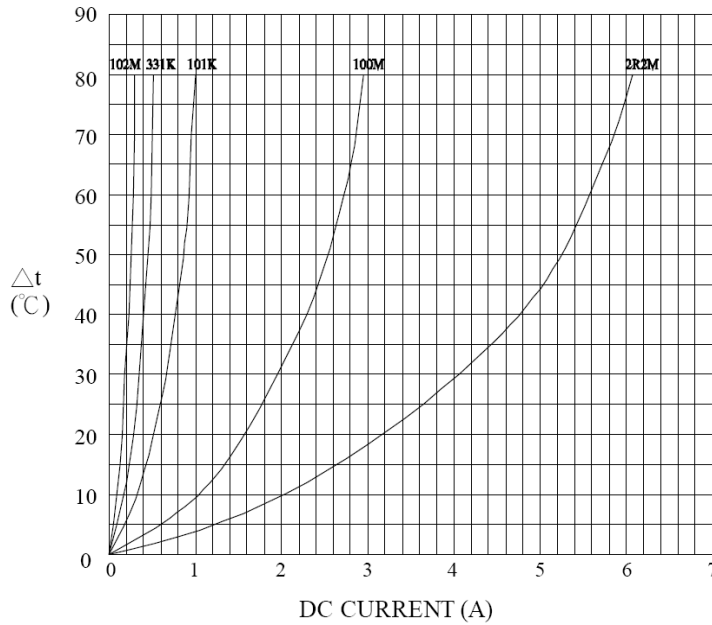


SUPERWORLD ELECTRONICS (S) PTE LTD

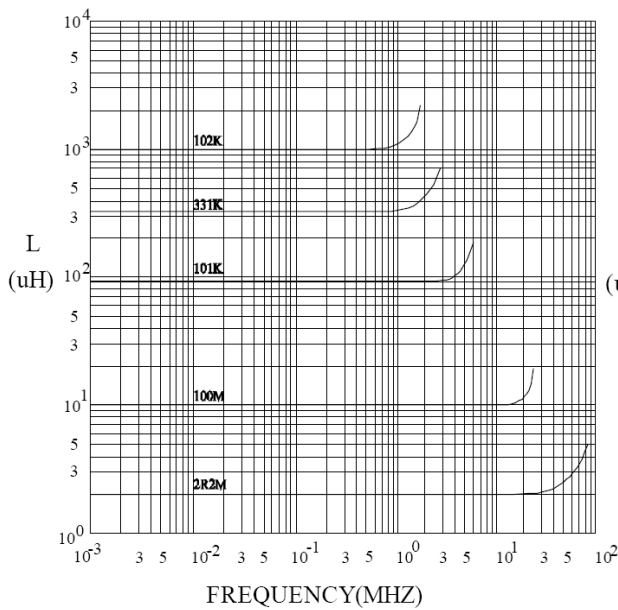
PG. 2

## 6. ELECTRICAL CHARACTERISTICS :

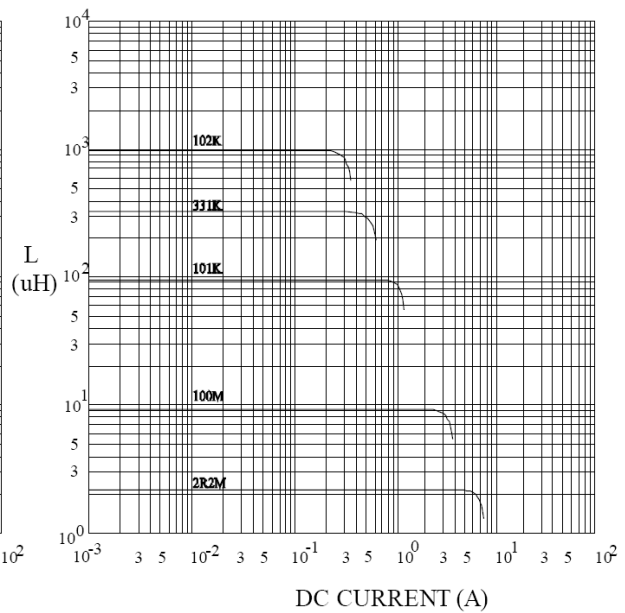
@ TEMP. RISE VS. DC SUPERPOSITION RESPONSE CURVE



@ INDUCTANCE VS. FREQUENCY RESPONSE CURVE



@ INDUCTANCE VS. DC SUPERPOSITION RESPONSE CURVE



RoHS Compliant

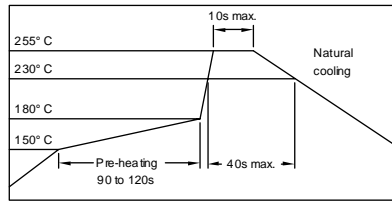
NOTE : Specifications subject to change without notice. Please check our website for latest information.

25.11.2014



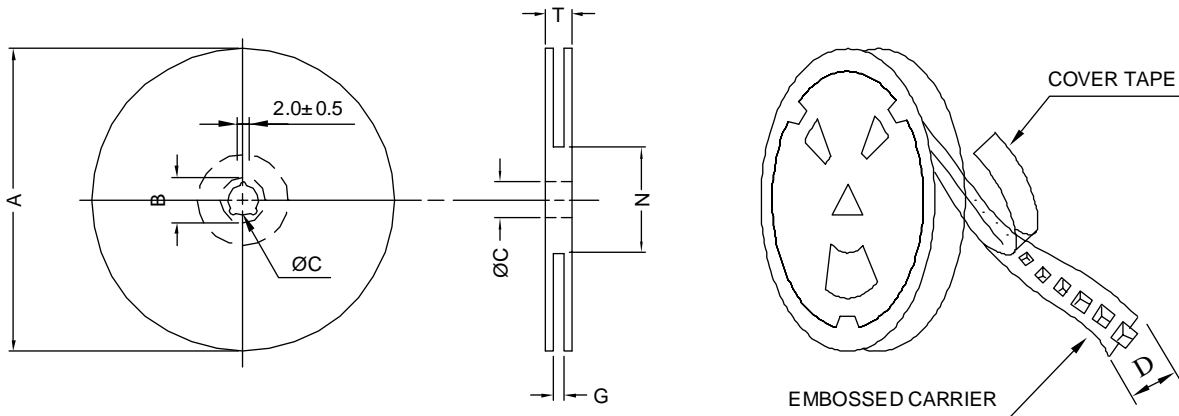
SUPERWORLD ELECTRONICS (S) PTE LTD

### RECOMMENDED SOLDERING CONDITIONS REFLOW SOLDERINGS

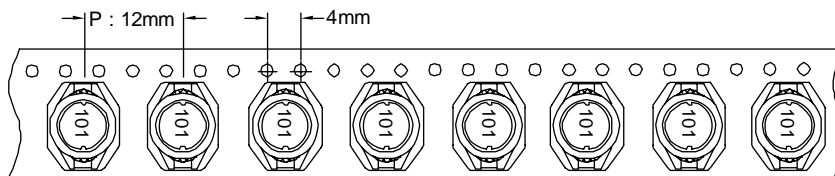


### 7. PACKAGING INFORMATION :

#### ( 1 ) CONFIGURATION



\* CARRIER TAPE WIDTH : D



#### ( 2 ) DIMENSIONS

Unit:m/m

STYLE	A	B	C	D	G	N	T
13-24	330	21±0.8	13	24	26 <sup>+0</sup>	50 <sup>-0</sup>	30.4

#### ( 3 ) QTY & G.W. PER PACKAGE

SERIES	INNER : REEL			OUTER : CARTON		
	QTY (PCS)	G.W. (gw)	STYLE	QTY (PCS)	G.W. (Kg)	SIZE (cm)
SDB0805	1000	1100	13-24	4000	7.9	40 x 40 x 24



**RoHS Compliant**

NOTE : Specifications subject to change without notice. Please check our website for latest information.

25.11.2014



**SUPERWORLD ELECTRONICS (S) PTE LTD**