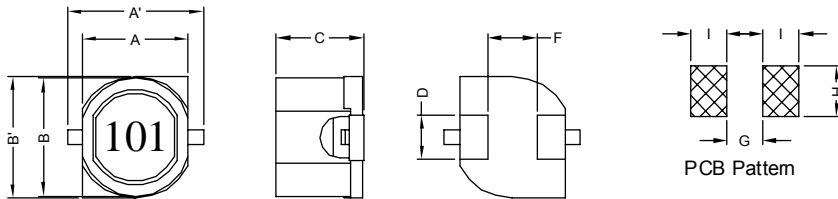


### 1. PART NO. EXPRESSION :

SDB0705101MZ F  
 (a) (b) (c) (d)(e)(f)

- (a) Series code
- (b) Dimension code
- (c) Inductance code : 101 = 100uH
- (d) Tolerance code : M = ±20%
- (e) Z : Standard part
- (f) F : RoHS Compliant

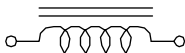
### 2. CONFIGURATION & DIMENSIONS :



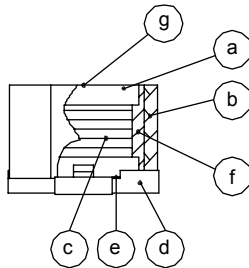
Unit: m/m

A'	A	B'	B	C	D	F	G	H	I
10.5 Max.	7.0 Ref.	8.0±0.3	7.8 Ref.	5.7±0.3	3.0±0.2	3.7±0.3	2.8 Ref.	3.9 Ref.	2.8 Ref.

### 3. SCHEMATIC :



### 4. MATERIALS :



- (a) DR Core
- (b) RI Core
- (c) Wire
- (d) Base
- (e) Adhesive
- (f) Adhesive
- (g) Ink

### 5. GENERAL SPECIFICATION :

- a) Temp. rise : 50° C Max.
- b) Rated current : Base on temp. rise  $\Delta L/L0A = 10\%$  Typ.
- c) Operating temp. : -40° C to +75° C
- d) Storage condition (component in its packaging)
  - i) Temperature : -10 to 40° C
  - ii) Humidity : 60%
- e) Resistance to solder heat : 260° C.10 secs



**RoHS Compliant**

NOTE : Specifications subject to change without notice. Please check our website for latest information.

25.11.2014



## 6. ELECTRICAL CHARACTERISTICS :

Part No.	Inductance ( $\mu$ H)	Test Freq. ( Hz )	RDC ( $\Omega$ ) Max.	IDC ( A )
SDB0705100MZF	10 $\pm$ 20%	1V/1K	0.05	1.60
SDB0705120MZF	12 $\pm$ 20%	1V/1K	0.06	1.50
SDB0705150MZF	15 $\pm$ 20%	1V/1K	0.07	1.40
SDB0705180MZF	18 $\pm$ 20%	1V/1K	0.08	1.30
SDB0705220MZF	22 $\pm$ 20%	1V/1K	0.10	1.10
SDB0705270MZF	27 $\pm$ 20%	1V/1K	0.10	1.00
SDB0705330MZF	33 $\pm$ 20%	1V/1K	0.15	0.92
SDB0705390MZF	39 $\pm$ 20%	1V/1K	0.15	0.84
SDB0705470MZF	47 $\pm$ 20%	1V/1K	0.20	0.76
SDB0705560MZF	56 $\pm$ 20%	1V/1K	0.25	0.68
SDB0705680MZF	68 $\pm$ 20%	1V/1K	0.30	0.63
SDB0705820MZF	82 $\pm$ 20%	1V/1K	0.30	0.58
SDB0705101MZF	100 $\pm$ 20%	1V/1K	0.40	0.50
SDB0705121MZF	120 $\pm$ 20%	1V/1K	0.45	0.46
SDB0705151MZF	150 $\pm$ 20%	1V/1K	0.55	0.40
SDB0705181MZF	180 $\pm$ 20%	1V/1K	0.70	0.38
SDB0705221MZF	220 $\pm$ 20%	1V/1K	0.75	0.36



RoHS Compliant

NOTE : Specifications subject to change without notice. Please check our website for latest information.

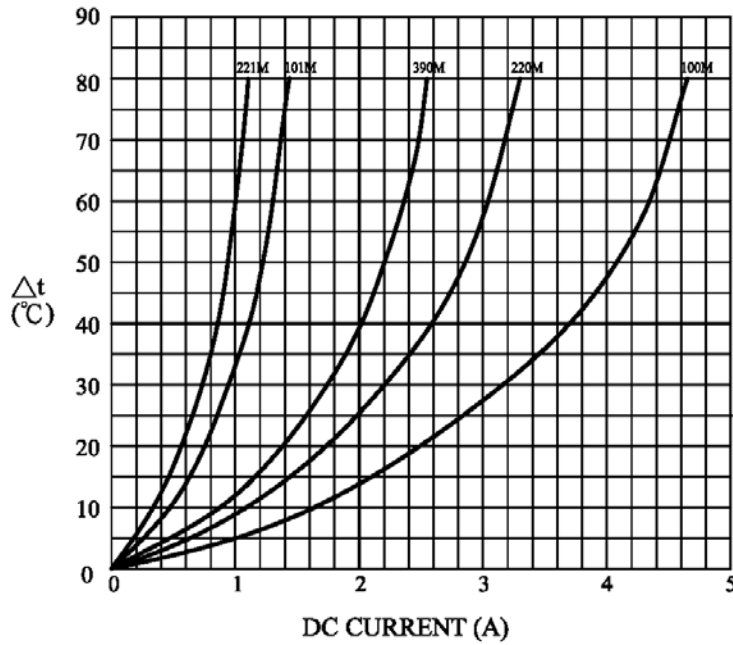
25.11.2014



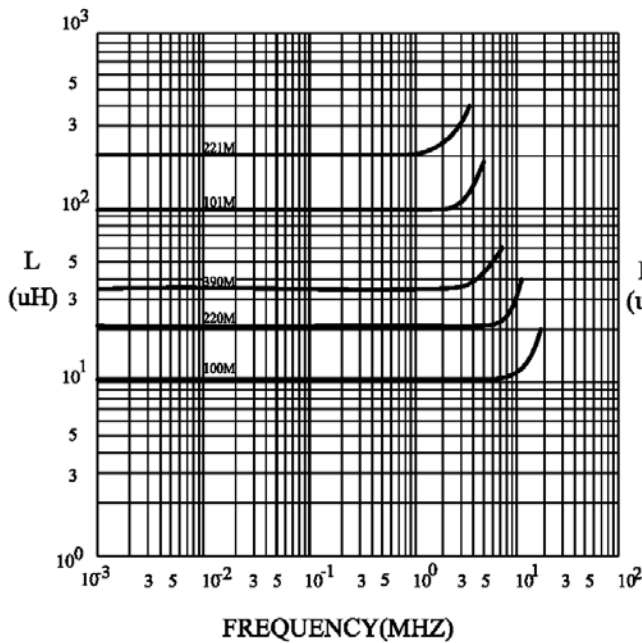
SUPERWORLD ELECTRONICS (S) PTE LTD

6. ELECTRICAL CHARACTERISTICS :

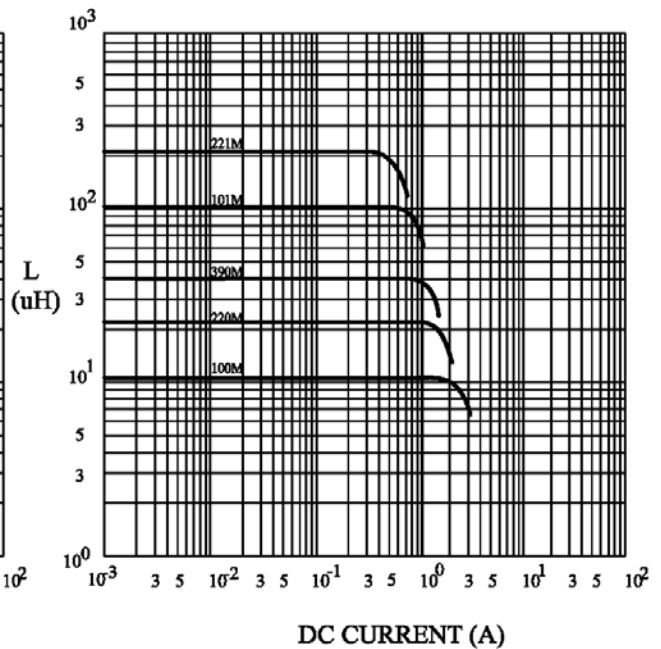
@ TEMP. RISE VS. DC SUPERPOSITION RESPONSE CURVE



@ INDUCTANCE VS. FREQUENCY RESPONSE CURVE



@ INDUCTANCE VS. DC SUPERPOSITION RESPONSE CURVE



RoHS Compliant

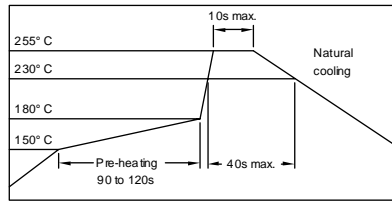
NOTE : Specifications subject to change without notice. Please check our website for latest information.

25.11.2014



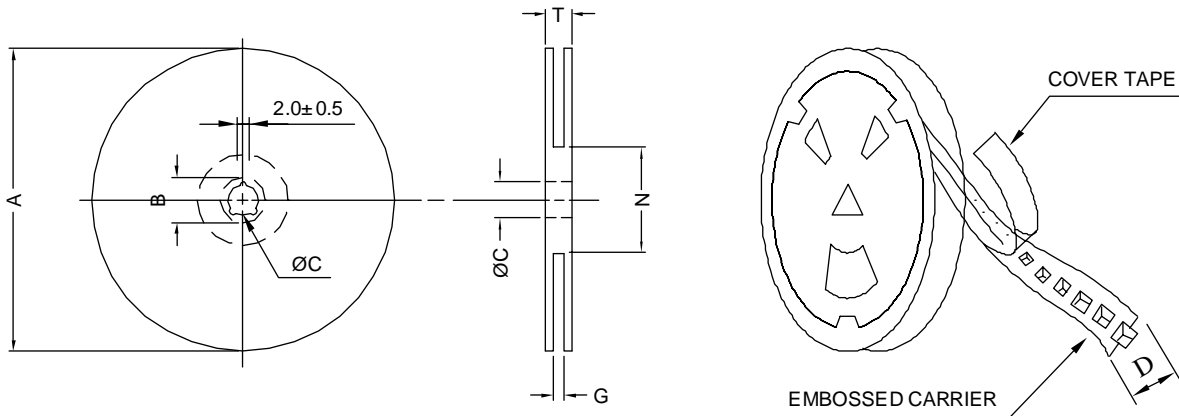
SUPERWORLD ELECTRONICS (S) PTE LTD

### RECOMMENDED SOLDERING CONDITIONS REFLOW SOLDERINGS

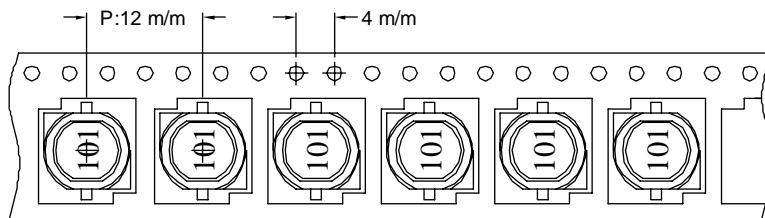


### 7. PACKAGING INFORMATION :

#### ( 1 ) CONFIGURATION



\* CARRIER TAPE WIDTH : D



#### ( 2 ) DIMENSIONS

Unit:m/m

STYLE	A	B	C	D	G	N	T
13-16	330	21±0.8	13	16	26 <sup>+0</sup>	50 <sup>-0</sup>	30.4

#### ( 3 ) QTY & G.W. PER PACKAGE

SERIES	INNER : REEL			OUTER : CARTON		
	QTY (PCS)	G.W. (gw)	STYLE	QTY (PCS)	G.W. (Kg)	SIZE (cm)
SDB0705	900	1710	13-16	5400	13.8	40 x 40 x 24



**RoHS Compliant**

NOTE : Specifications subject to change without notice. Please check our website for latest information.

25.11.2014



**SUPERWORLD ELECTRONICS (S) PTE LTD**