

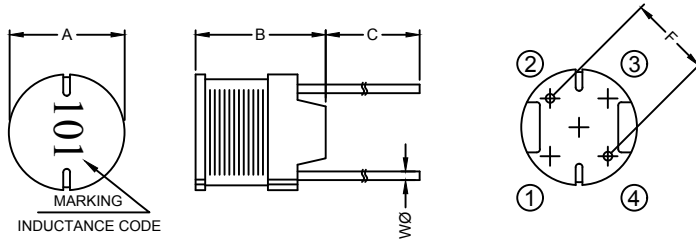
1. PART NO. EXPRESSION :

R C C 1 0 1 0 1 0 1 M Z F
 (a) (b) (c) (d)(e)(f)

- (a) Series code
- (b) Dimension code
- (c) Inductance code : 101 = 100uH

- (d) Tolerance code : K = ±10%, M = ±20%
- (e) X, Y, Z : Standard part
- (f) F : Lead Free

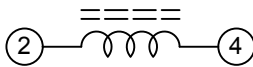
2. CONFIGURATION & DIMENSIONS :



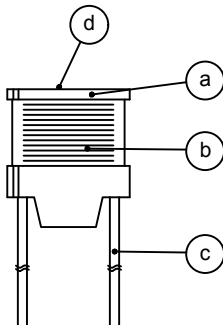
Unit:m/m

A	B	C	F	WØ
10.0±0.5	10.0±0.5	15.0±3.0	6.4±0.5	0.65±0.10

3. SCHEMATIC :



4. MATERIALS :



- (a) CORE
- (b) WIRE
- (c) LEAD
- (d) INK

5. GENERAL SPECIFICATION :

- a) THE INDUCTANCE DROP AT RATED IS 10% MAX.
- b) TEMP. RISE : 40°C MAX. AT RATED CURRENT
- c) STORAGE TEMP.: -40°C TO 125°C
- d) OPERATING TEMP.: -40°C TO 125°C



RoHS Compliant

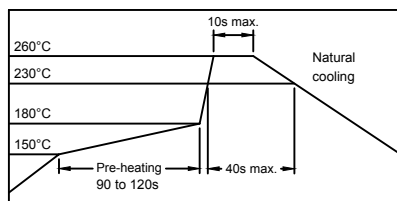
NOTE : Specifications subject to change without notice. Please check our website for latest information.

15.09.2016

6. ELECTRICAL CHARACTERISTICS :

Part No.	Inductance (μH)	Test Frequency (Hz)	RDC (Ω) Max.	IDC (A) Max.
RCC1010100MZF	10 \pm 20%	1V/2.52M	0.022	5.30
RCC1010120MZF	12 \pm 20%	1V/2.52M	0.023	4.90
RCC1010150MZF	15 \pm 20%	1V/2.52M	0.026	4.40
RCC1010180MZF	18 \pm 20%	1V/2.52M	0.033	4.00
RCC1010220MZF	22 \pm 20%	1V/2.52M	0.037	3.60
RCC1010270MZF	27 \pm 20%	1V/2.52M	0.048	3.30
RCC1010330KZF	33 \pm 10%	1V/2.52M	0.055	2.90
RCC1010390KZF	39 \pm 10%	1V/2.52M	0.073	2.70
RCC1010470KZF	47 \pm 10%	1V/2.52M	0.083	2.50
RCC1010560KZF	56 \pm 10%	1V/2.52M	0.092	2.30
RCC1010680KZF	68 \pm 10%	1V/2.52M	0.120	2.10
RCC1010820KZF	82 \pm 10%	1V/2.52M	0.140	1.90
RCC1010101KZF	100 \pm 10%	1V/1K	0.160	1.70
RCC1010121KZF	120 \pm 10%	1V/1K	0.200	1.50
RCC1010151KZF	150 \pm 10%	1V/1K	0.230	1.40
RCC1010181KZF	180 \pm 10%	1V/1K	0.310	1.30
RCC1010221KZF	220 \pm 10%	1V/1K	0.340	1.10
RCC1010271KZF	270 \pm 10%	1V/1K	0.400	1.00
RCC1010331KZF	330 \pm 10%	1V/1K	0.520	0.93
RCC1010391KZF	390 \pm 10%	1V/1K	0.650	0.86
RCC1010471KZF	470 \pm 10%	1V/1K	0.710	0.78
RCC1010561KZF	560 \pm 10%	1V/1K	1.000	0.71
RCC1010681KZF	680 \pm 10%	1V/1K	1.100	0.65
RCC1010821KZF	820 \pm 10%	1V/1K	1.300	0.59
RCC1010102KZF	1000 \pm 10%	1V/1K	1.700	0.53

RECOMMENDED SOLDERING CONDITIONS REFLOW SOLDERINGS



RoHS Compliant

NOTE : Specifications subject to change without notice. Please check our website for latest information.

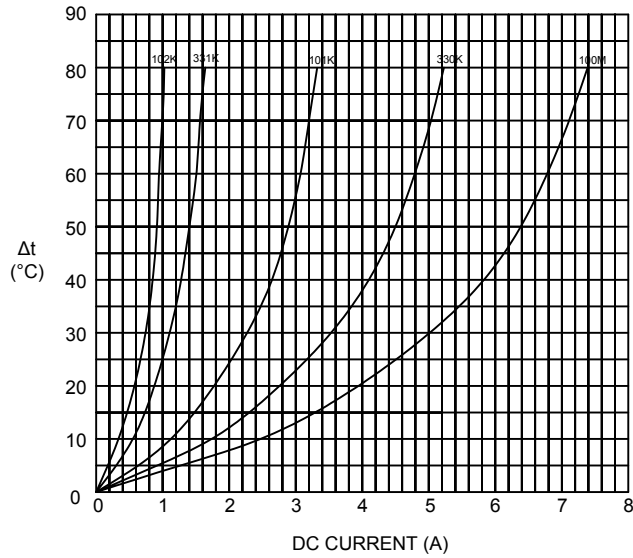
15.09.2016



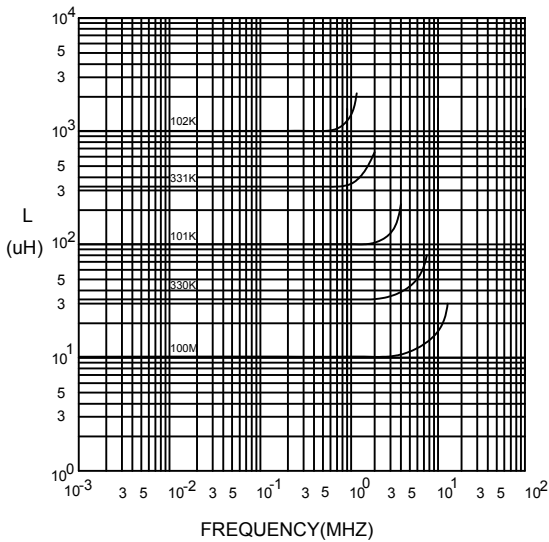
SUPERWORLD ELECTRONICS (S) PTE LTD

7. CHARACTERISTICS CURVES :

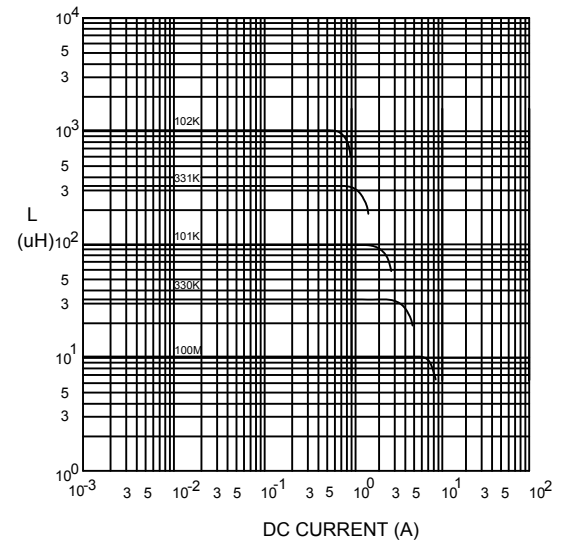
@ TEMP. RISE VS. DC SUPERPOSITION RESPONSE CURVE



@ INDUCTANCE VS. FREQUENCY RESPONSE CURVE



@ INDUCTANCE VS. DC SUPERPOSITION RESPONSE CURVE



RoHS Compliant

NOTE : Specifications subject to change without notice. Please check our website for latest information.

15.09.2016



SUPERWORLD ELECTRONICS (S) PTE LTD

8. PACKAGING INFORMATION :

CODE	INNER PACKAGE	INNER PACKAGE Q'TY
F	TRAY	120 PCS



RoHS Compliant

NOTE : Specifications subject to change without notice. Please check our website for latest information.

15.09.2016



SUPERWORLD ELECTRONICS (S) PTE LTD