

# RADIAL CHOKE COIL

RCC1006 SERIES

## 1. PART NO. EXPRESSION :

RCC1006101MZ F

(a) (b) (c) (d)(e)(f)

(a) Series code

(b) Dimension code

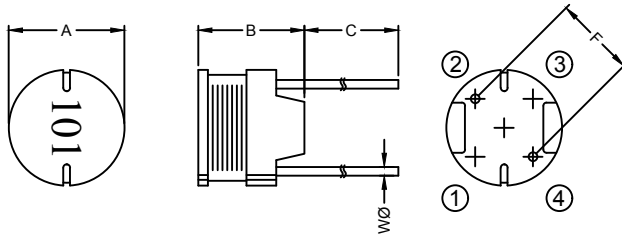
(c) Inductance code : 101 = 100uH

(d) Tolerance code : K = ±10%, M = ±20%

(e) X, Y, Z : Standard part

(f) F : Lead Free

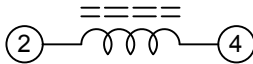
## 2. CONFIGURATION & DIMENSIONS :



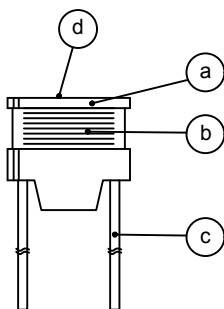
Unit:m/m

A	B	C	F	WØ
10.0±0.5	6.0±0.5	15.0±3.0	6.4±0.5	0.65±0.10

## 3. SCHEMATIC :



## 4. MATERIALS :



(a) CORE

(b) WIRE

(c) LEAD

(d) INK

## 5. GENERAL SPECIFICATION :

- a)  $\Delta L/L_{0A}$  : 10% MAX. AT RATED CURRENT
- b) TEMP. RISE : 40°C MAX. AT RATED CURRENT
- c) STORAGE TEMP.: -40°C TO 125°C
- d) OPERATING TEMP.: -40°C TO 85°C



RoHS Compliant

NOTE : Specifications subject to change without notice. Please check our website for latest information.

15.09.2016



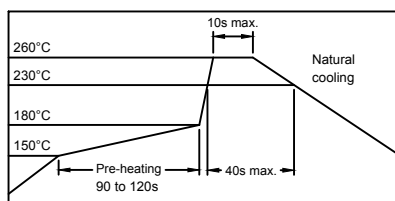
SUPERWORLD ELECTRONICS (S) PTE LTD

PG. 1

### 6. ELECTRICAL CHARACTERISTICS :

Part No.	Inductance ( $\mu$ H )	Test Frequency ( Hz )	RDC ( $\Omega$ ) Max.	IDC ( A ) Max.
RCC1006100MZF	10 $\pm$ 20%	1V/2.52M	0.040	3.60
RCC1006120MZF	12 $\pm$ 20%	1V/2.52M	0.044	3.30
RCC1006150MZF	15 $\pm$ 20%	1V/2.52M	0.058	2.90
RCC1006180MZF	18 $\pm$ 20%	1V/2.52M	0.064	2.70
RCC1006220MZF	22 $\pm$ 20%	1V/2.52M	0.088	2.40
RCC1006270MZF	27 $\pm$ 20%	1V/2.52M	0.100	2.20
RCC1006330KZF	33 $\pm$ 10%	1V/2.52M	0.110	2.00
RCC1006390KZF	39 $\pm$ 10%	1V/2.52M	0.140	1.80
RCC1006470KZF	47 $\pm$ 10%	1V/2.52M	0.160	1.70
RCC1006560KZF	56 $\pm$ 10%	1V/2.52M	0.190	1.50
RCC1006680KZF	68 $\pm$ 10%	1V/2.52M	0.220	1.40
RCC1006820KZF	82 $\pm$ 10%	1V/2.52M	0.290	1.30
RCC1006101KZF	100 $\pm$ 10%	1V/1K	0.320	1.30
RCC1006121KZF	120 $\pm$ 10%	1V/1K	0.380	1.20
RCC1006151KZF	150 $\pm$ 10%	1V/1K	0.500	1.00
RCC1006181KZF	180 $\pm$ 10%	1V/1K	0.560	0.84
RCC1006221KZF	220 $\pm$ 10%	1V/1K	0.780	0.76
RCC1006271KZF	270 $\pm$ 10%	1V/1K	0.920	0.69
RCC1006331KZF	330 $\pm$ 10%	1V/1K	1.100	0.62
RCC1006391KZF	390 $\pm$ 10%	1V/1K	1.300	0.57
RCC1006471KZF	470 $\pm$ 10%	1V/1K	1.500	0.52
RCC1006561KZF	560 $\pm$ 10%	1V/1K	1.900	0.48
RCC1006681KZF	680 $\pm$ 10%	1V/1K	2.200	0.43
RCC1006821KZF	820 $\pm$ 10%	1V/1K	2.600	0.40
RCC1006102KZF	1000 $\pm$ 10%	1V/1K	3.200	0.36

### RECOMMENDED SOLDERING CONDITIONS REFLOW SOLDERINGS



**RoHS Compliant**

NOTE : Specifications subject to change without notice. Please check our website for latest information.

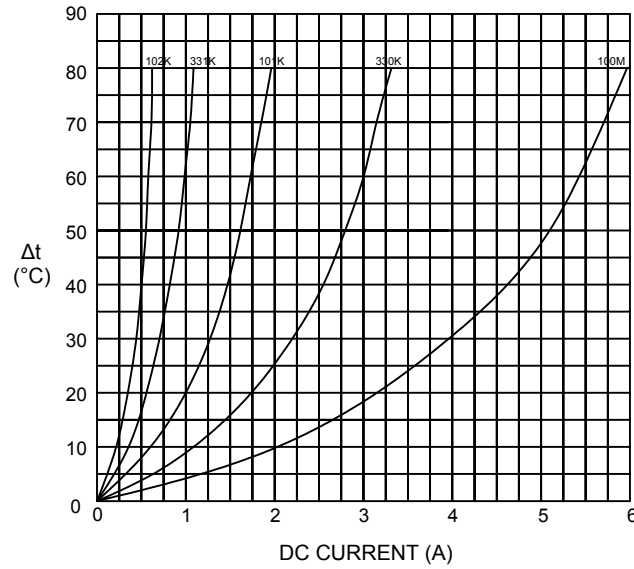
15.09.2016



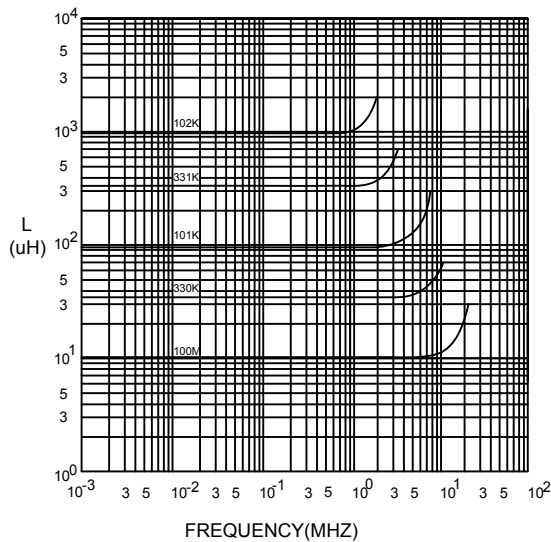
**SUPERWORLD ELECTRONICS (S) PTE LTD**

### 7. CHARACTERISTICS CURVES :

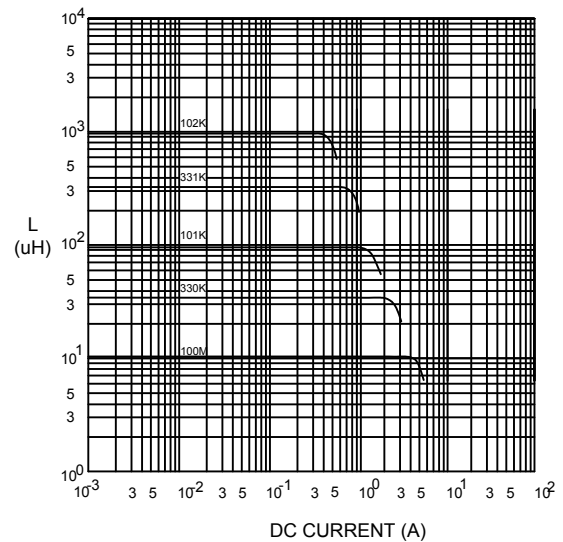
@ TEMP. RISE VS. DC SUPERPOSITION RESPONSE CURVE



@ INDUCTANCE VS. FREQUENCY RESPONSE CURVE



@ INDUCTANCE VS. DC SUPERPOSITION RESPONSE CURVE



NOTE : Specifications subject to change without notice. Please check our website for latest information.



**RoHS Compliant**

15.09.2016



**SUPERWORLD ELECTRONICS (S) PTE LTD**

### 8. PACKAGING INFORMATION :

CODE	INNER PACKAGE	INNER PACKAGE Q'TY
F	TRAY	300 PCS



**RoHS Compliant**

*NOTE : Specifications subject to change without notice. Please check our website for latest information.*

15.09.2016



**SUPERWORLD ELECTRONICS (S) PTE LTD**