

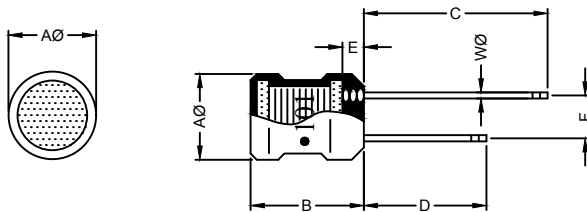
# RADIAL CHOKE COIL

RCB0710 SERIES

## 1. PART NO. EXPRESSION :

<u>R</u>	<u>C</u>	<u>B</u>	<u>0</u>	<u>7</u>	<u>1</u>	<u>0</u>	<u>1</u>	<u>0</u>	<u>1</u>	<u>K</u>	<u>Z</u>	<u>F</u>
(a)	(b)	(c)	(d)(e)(f)	(a) Series code			(b) Dimension code			(d) Tolerance code : K = ±10%	(e) X, Y, Z : Standard part	
(c) Inductance code : 101 = 100uH			(f) F : Lead Free									

## 2. CONFIGURATION & DIMENSIONS :

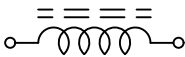


Marking :  
" ● " : Start

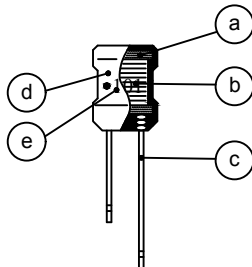
Unit:m/m

A∅	B	C	D	E	F	W∅
6.70±0.5	10.00±1.0	25.00±5.0	18.00±5.0	2.50 Max.	3.00±0.5	0.65±0.1

## 3. SCHEMATIC :



## 4. MATERIALS :

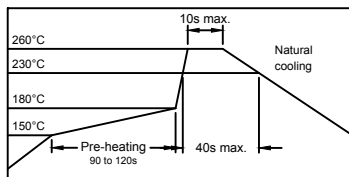


- (a) CORE
- (b) WIRE
- (c) LEAD
- (d) TUBE
- (e) INK

## 5. GENERAL SPECIFICATION :

- a) TEMP. RISE : 20°C MAX. AT RATED CURRENT
- b) STORAGE TEMP. : -40°C TO +125°C
- c) OPERATING TEMP. : -40°C TO +125°C

RECOMMENDED SOLDERING CONDITIONS  
REFLOW SOLDERINGS



RoHS Compliant

NOTE : Specifications subject to change without notice. Please check our website for latest information.

15.09.2016

 SUPERWORLD ELECTRONICS (S) PTE LTD

### 6. ELECTRICAL CHARACTERISTICS :

Part No.	Inductance ( $\mu$ H)	Q Min.	Test Frequency (Hz)	SRF (MHz) Min.	RDC ( $\Omega$ ) Max.	IDC (mA) Max.
RCB0710470KZF	47 $\pm$ 10%	30	1V/2.52M	6.00	0.40	450
RCB0710560KZF	56 $\pm$ 10%	30	1V/2.52M	5.50	0.45	400
RCB0710680KZF	68 $\pm$ 10%	30	1V/2.52M	5.00	0.50	360
RCB0710820KZF	82 $\pm$ 10%	30	1V/2.52M	4.50	0.50	340
RCB0710101KZF	100 $\pm$ 10%	45	1V/0.796M	4.20	0.60	320
RCB0710121KZF	120 $\pm$ 10%	45	1V/0.796M	3.60	0.70	300
RCB0710151KZF	150 $\pm$ 10%	45	1V/0.796M	3.40	0.90	280
RCB0710181KZF	180 $\pm$ 10%	45	1V/0.796M	3.20	1.00	260
RCB0710221KZF	220 $\pm$ 10%	45	1V/0.796M	3.00	1.20	240
RCB0710271KZF	270 $\pm$ 10%	45	1V/0.796M	2.80	1.40	220
RCB0710331KZF	330 $\pm$ 10%	45	1V/0.796M	2.50	1.60	200
RCB0710391KZF	390 $\pm$ 10%	45	1V/0.796M	2.30	1.80	180
RCB0710471KZF	470 $\pm$ 10%	45	1V/0.796M	2.20	2.00	160
RCB0710561KZF	560 $\pm$ 10%	45	1V/0.796M	2.00	2.50	150
RCB0710681KZF	680 $\pm$ 10%	45	1V/0.796M	1.70	2.90	140
RCB0710821KZF	820 $\pm$ 10%	45	1V/0.796M	1.50	3.10	130
RCB0710102KZF	1000 $\pm$ 10%	45	1V/0.252M	1.40	3.90	120
RCB0710122KZF	1200 $\pm$ 10%	60	1V/0.252M	1.10	4.40	110
RCB0710152KZF	1500 $\pm$ 10%	60	1V/0.252M	0.90	6.00	100
RCB0710182KZF	1800 $\pm$ 10%	60	1V/0.252M	0.80	7.00	90
RCB0710222KZF	2200 $\pm$ 10%	60	1V/0.252M	0.75	8.00	80
RCB0710272KZF	2700 $\pm$ 10%	60	1V/0.252M	0.70	9.00	70
RCB0710332KZF	3300 $\pm$ 10%	60	1V/0.252M	0.60	12.00	60
RCB0710392KZF	3900 $\pm$ 10%	60	1V/0.252M	0.55	14.00	55
RCB0710472KZF	4700 $\pm$ 10%	60	1V/0.252M	0.50	16.00	50
RCB0710562KZF	5600 $\pm$ 10%	60	1V/0.252M	0.48	18.00	45
RCB0710682KZF	6800 $\pm$ 10%	60	1V/0.252M	0.44	24.00	40
RCB0710822KZF	8200 $\pm$ 10%	60	1V/0.252M	0.40	30.00	36
RCB0710103KZF	10000 $\pm$ 10%	60	1V/0.0796M	0.36	39.00	34
RCB0710123KZF	12000 $\pm$ 10%	60	1V/0.0796M	0.32	46.00	32
RCB0710153KZF	15000 $\pm$ 10%	60	1V/0.0796M	0.30	54.00	30
RCB0710183KZF	18000 $\pm$ 10%	60	1V/0.0796M	0.28	76.00	27
RCB0710223KZF	22000 $\pm$ 10%	60	1V/0.0796M	0.24	92.00	25
RCB0710273KZF	27000 $\pm$ 10%	60	1V/0.0796M	0.20	102.00	22
RCB0710333KZF	33000 $\pm$ 10%	60	1V/0.0796M	0.16	140.00	20
RCB0710393KZF	39000 $\pm$ 10%	60	1V/0.0796M	0.13	150.00	18
RCB0710473KZF	47000 $\pm$ 10%	60	1V/0.0796M	0.10	162.00	16



**RoHS Compliant**

NOTE : Specifications subject to change without notice. Please check our website for latest information.

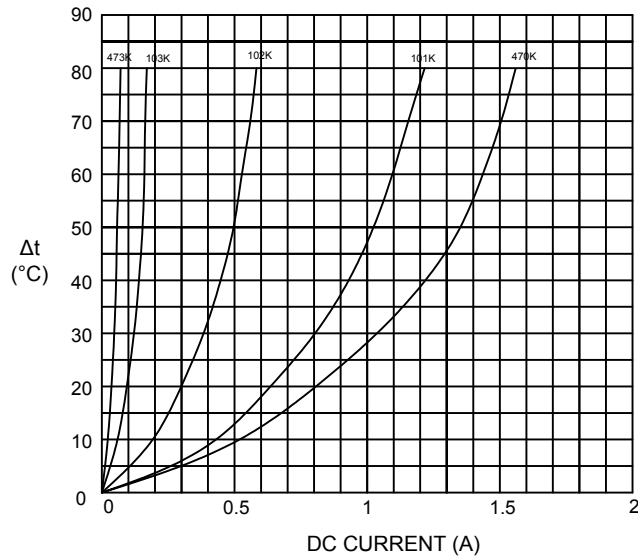
15.09.2016



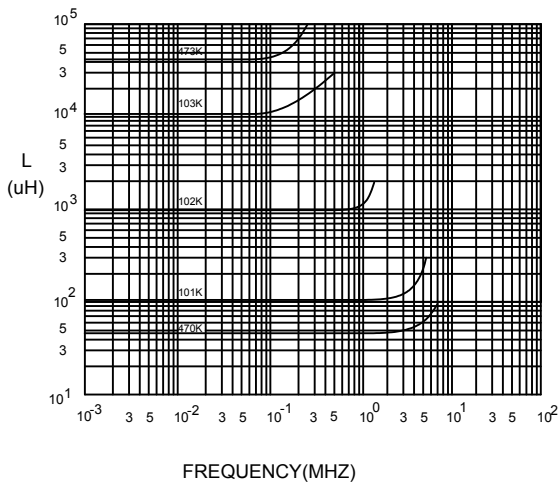
**SUPERWORLD ELECTRONICS (S) PTE LTD**

### 7. CHARACTERISTICS CURVES :

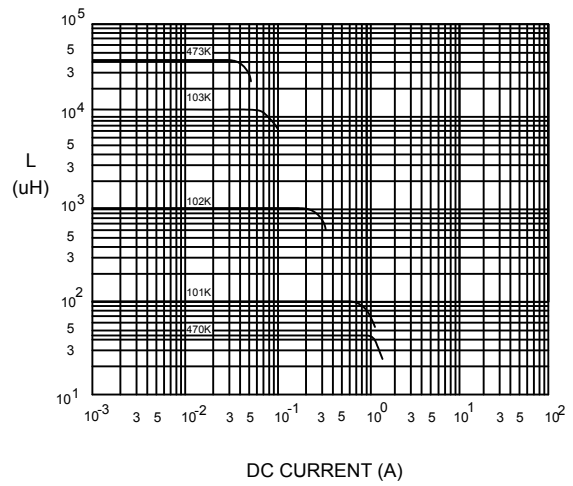
@ TEMP. RISE VS. DC SUPERPOSITION RESPONSE CURVE



@ INDUCTANCE VS. FREQUENCY RESPONSE CURVE



@ INDUCTANCE VS. DC SUPERPOSITION RESPONSE CURVE



**RoHS Compliant**

NOTE : Specifications subject to change without notice. Please check our website for latest information.

15.09.2016



**SUPERWORLD ELECTRONICS (S) PTE LTD**

### 8. PACKAGING INFORMATION :

CODE	INNER PACKAGE	INNER PACKAGE Q'TY
F	TRAY	400 PCS



**RoHS Compliant**

*NOTE : Specifications subject to change without notice. Please check our website for latest information.*

15.09.2016



**SUPERWORLD ELECTRONICS (S) PTE LTD**