

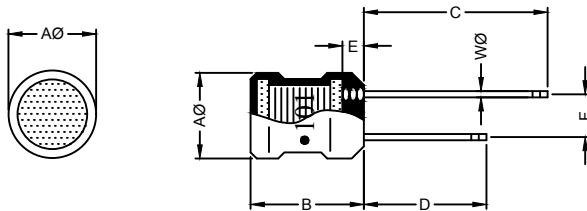
RADIAL CHOKE COIL

RCB0506 SERIES

1. PART NO. EXPRESSION :

| | | | | | | | | | | | | |
|-----|-----|-----|-----------|---|---|-----------------------------------|-----------------|---|---|-----------------------------|---|---|
| R | C | B | 0 | 5 | 0 | 6 | 1 | 0 | 1 | M | Z | F |
| (a) | (b) | (c) | (d)(e)(f) | | | | (a) Series code | | | | (d) Tolerance code : K = ±10%, M = ±20% | |
| | | | | | | (b) Dimension code | | | | (e) X, Y, Z : Standard part | | |
| | | | | | | (c) Inductance code : 101 = 100uH | | | | (f) F : Lead Free | | |

2. CONFIGURATION & DIMENSIONS :

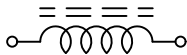


Marking :
"●" : Start

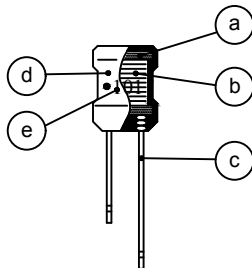
Unit:m/m

| A \varnothing | B | C | D | E | F | W \varnothing |
|-----------------|--------------------------------------|-----------|-----------|-----------|-----------|-----------------|
| 5.00±0.5 | 6.50 ^{+1.0} _{-0.5} | 20.00±5.0 | 15.00±5.0 | 2.50 Max. | 2.00±0.50 | 0.50 Ref. |

3. SCHEMATIC :



4. MATERIALS :

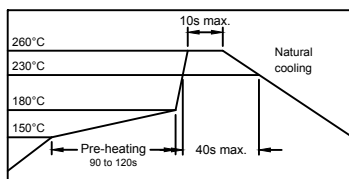


- (a) CORE
- (b) WIRE
- (c) LEAD
- (d) TUBE
- (e) INK

5. GENERAL SPECIFICATION :

- a) TEMP. RISE : 20°C MAX. AT RATED CURRENT
- b) STORAGE TEMP.: -40°C TO +125°C
- c) OPERATING TEMP. : -40°C TO +125°C

RECOMMENDED SOLDERING CONDITIONS
REFLOW SOLDERINGS



RoHS Compliant

NOTE : Specifications subject to change without notice. Please check our website for latest information.

15.09.2016



SUPERWORLD ELECTRONICS (S) PTE LTD

PG. 1

6. ELECTRICAL CHARACTERISTICS :

| Part No. | Inductance (μH) | Q Min. | Test Frequency (Hz) | SRF (MHz) Min. | RDC (Ω) Max. | IDC (mA) Max. |
|---------------|---------------------------------|-----------|------------------------|----------------------|-----------------------------|---------------------|
| RCB05061R0MZF | 1.0 \pm 20% | 60 | 1V/7.96M | 105.0 | 0.10 | 1030 |
| RCB05061R2MZF | 1.2 \pm 20% | 60 | 1V/7.96M | 90.0 | 0.15 | 980 |
| RCB05061R5MZF | 1.5 \pm 20% | 60 | 1V/7.96M | 75.0 | 0.20 | 920 |
| RCB05061R8MZF | 1.8 \pm 20% | 60 | 1V/7.96M | 70.0 | 0.22 | 880 |
| RCB05062R2MZF | 2.2 \pm 20% | 60 | 1V/7.96M | 65.0 | 0.24 | 830 |
| RCB05062R7MZF | 2.7 \pm 20% | 60 | 1V/7.96M | 60.0 | 0.27 | 790 |
| RCB05063R3MZF | 3.3 \pm 20% | 60 | 1V/7.96M | 50.0 | 0.30 | 750 |
| RCB05063R9MZF | 3.9 \pm 20% | 60 | 1V/7.96M | 45.0 | 0.30 | 720 |
| RCB05064R7MZF | 4.7 \pm 20% | 60 | 1V/7.96M | 40.0 | 0.35 | 670 |
| RCB05065R6KZF | 5.6 \pm 10% | 60 | 1V/7.96M | 35.0 | 0.35 | 640 |
| RCB05066R8KZF | 6.8 \pm 10% | 60 | 1V/7.96M | 30.0 | 0.40 | 620 |
| RCB05068R2KZF | 8.2 \pm 10% | 60 | 1V/7.96M | 25.0 | 0.40 | 590 |
| RCB0506100KZF | 10.0 \pm 10% | 60 | 1V/2.52M | 20.0 | 0.45 | 550 |
| RCB0506120KZF | 12.0 \pm 10% | 60 | 1V/2.52M | 15.0 | 0.50 | 530 |
| RCB0506150KZF | 15.0 \pm 10% | 60 | 1V/2.52M | 13.0 | 0.55 | 500 |
| RCB0506180KZF | 18.0 \pm 10% | 60 | 1V/2.52M | 11.0 | 0.60 | 480 |
| RCB0506220KZF | 22.0 \pm 10% | 60 | 1V/2.52M | 10.0 | 0.65 | 460 |
| RCB0506270KZF | 27.0 \pm 10% | 50 | 1V/2.52M | 9.0 | 0.75 | 430 |
| RCB0506330KZF | 33.0 \pm 10% | 50 | 1V/2.52M | 8.0 | 0.85 | 410 |
| RCB0506390KZF | 39.0 \pm 10% | 50 | 1V/2.52M | 7.5 | 0.90 | 390 |
| RCB0506470KZF | 47.0 \pm 10% | 50 | 1V/2.52M | 7.0 | 1.00 | 370 |
| RCB0506560KZF | 56.0 \pm 10% | 50 | 1V/2.52M | 6.5 | 1.20 | 350 |
| RCB0506680KZF | 68.0 \pm 10% | 50 | 1V/2.52M | 6.0 | 1.30 | 340 |
| RCB0506820KZF | 82.0 \pm 10% | 50 | 1V/2.52M | 5.5 | 1.50 | 320 |
| RCB0506101KZF | 100.0 \pm 10% | 50 | 1V/0.796M | 5.0 | 1.70 | 305 |
| RCB0506121KZF | 120.0 \pm 10% | 50 | 1V/0.796M | 4.8 | 1.90 | 290 |
| RCB0506151KZF | 150.0 \pm 10% | 50 | 1V/0.796M | 4.4 | 2.10 | 275 |
| RCB0506181KZF | 180.0 \pm 10% | 50 | 1V/0.796M | 4.2 | 2.30 | 235 |
| RCB0506221KZF | 220.0 \pm 10% | 45 | 1V/0.796M | 3.8 | 2.50 | 200 |
| RCB0506271KZF | 270.0 \pm 10% | 45 | 1V/0.796M | 3.6 | 2.75 | 180 |
| RCB0506331KZF | 330.0 \pm 10% | 45 | 1V/0.796M | 3.3 | 4.68 | 165 |
| RCB0506391KZF | 390.0 \pm 10% | 45 | 1V/0.796M | 3.0 | 6.00 | 150 |
| RCB0506471KZF | 470.0 \pm 10% | 55 | 1V/0.796M | 2.8 | 6.50 | 140 |
| RCB0506561KZF | 560.0 \pm 10% | 55 | 1V/0.796M | 2.4 | 8.50 | 135 |
| RCB0506681KZF | 680.0 \pm 10% | 55 | 1V/0.796M | 2.2 | 9.00 | 125 |
| RCB0506821KZF | 820.0 \pm 10% | 55 | 1V/0.796M | 2.0 | 9.60 | 120 |
| RCB0506102KZF | 1000.0 \pm 10% | 55 | 1V/0.252M | 1.8 | 11.50 | 100 |



RoHS Compliant

NOTE : Specifications subject to change without notice. Please check our website for latest information.

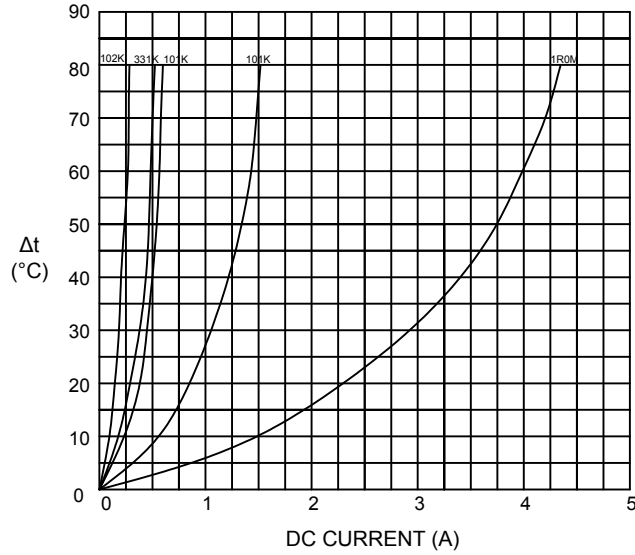
15.09.2016



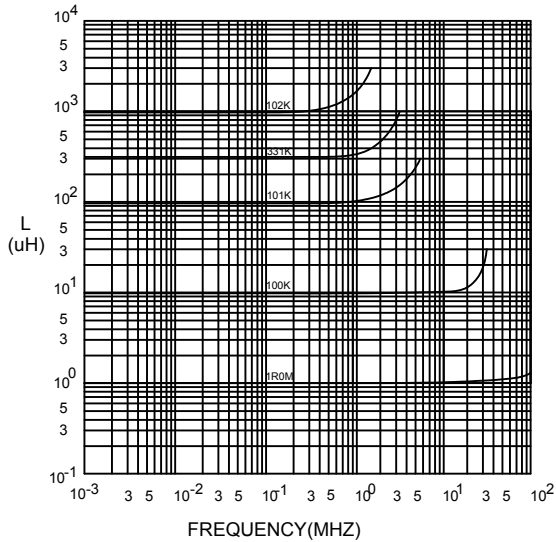
SUPERWORLD ELECTRONICS (S) PTE LTD

7. CHARACTERISTICS CURVES :

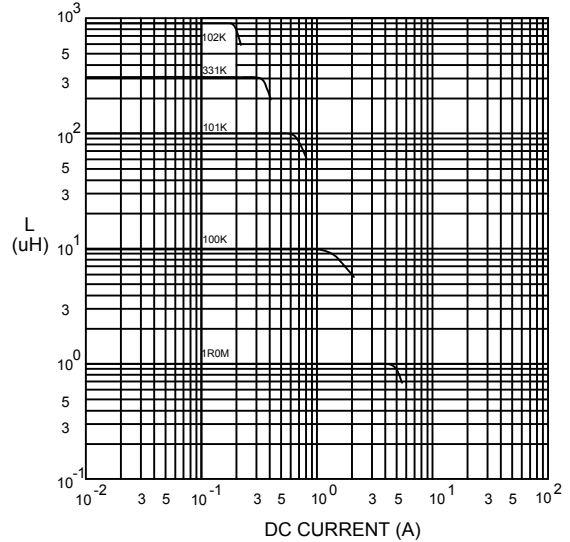
@ TEMP. RISE VS. DC SUPERPOSITION RESPONSE CURVE



@ INDUCTANCE VS. FREQUENCY RESPONSE CURVE



@ INDUCTANCE VS. DC SUPERPOSITION RESPONSE CURVE



NOTE : Specifications subject to change without notice. Please check our website for latest information.



RoHS Compliant

15.09.2016



SUPERWORLD ELECTRONICS (S) PTE LTD

8. PACKAGING INFORMATION :

| CODE | INNER PACKAGE | INNER PACKAGE Q'TY |
|------|---------------|--------------------|
| F | TRAY | 800 PCS |



RoHS Compliant

NOTE : Specifications subject to change without notice. Please check our website for latest information.

15.09.2016



SUPERWORLD ELECTRONICS (S) PTE LTD