

1. PART NO. EXPRESSION :

PSB0705 101 KZF
 (a) (b) (c) (d)(e)(f)

(a) Series code

(b) Dimension code

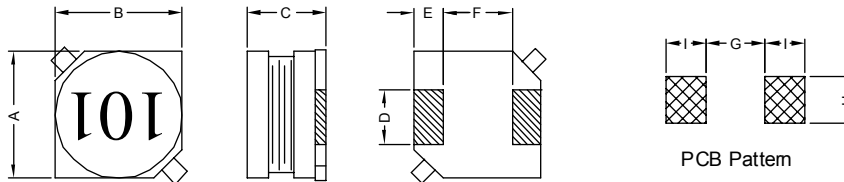
(c) Inductance code : 101 = 100.0uH

(d) Tolerance code : K = ± 10%, L = ± 15, M = ± 20%

(e) Z : Standard part

(f) F : RoHS Compliant

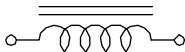
2. CONFIGURATION & DIMENSIONS :



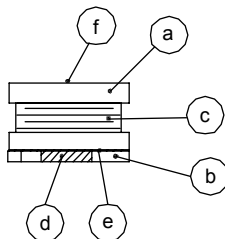
Unit:m/m

A	B	C	D	E	F	G	H	I
7.0±0.3	7.0±0.3	4.6±0.3	2.0±0.2	1.5±0.2	4.0±0.2	3.7 Ref.	2.2 Ref.	1.9 Ref.

3. SCHEMATIC :



4. MATERIALS :



(a) Core

(b) Base

(c) Wire

(d) Terminal

(e) Adhesive

(f) Ink

5. GENERAL SPECIFICATION :

- a) Temp. rise : 40° C Max. at Rated Current
- b) $\Delta L/L0A$: 10% Max. at Rated Current
- c) Operating temp. : -40° C to +85° C
- d) Storage condition (component in its packaging)
 - i) Temperature : -10 to 40° C
 - ii) Humidity : 60%
- e) Resistance to solder heat : 260° C.10 secs



RoHS Compliant

NOTE : Specifications subject to change without notice. Please check our website for latest information.

06.01.2015



SUPERWORLD ELECTRONICS (S) PTE LTD

6. ELECTRICAL CHARACTERISTICS :

Part No.	Inductance (μ H)	Test Frequency (Hz)	RDC ($m\Omega$) Max.	IDC (A) Max.
PSB07051R0MZF	1.0 \pm 20%	1V / 100K	23	3.50
PSB07051R5MZF	1.5 \pm 20%	1V / 100K	28	3.20
PSB07052R2MZF	2.2 \pm 20%	1V / 100K	33	3.00
PSB07053R3MZF	3.3 \pm 20%	1V / 100K	40	2.70
PSB07054R7MZF	4.7 \pm 20%	1V / 100K	50	2.50
PSB07056R8MZF	6.8 \pm 20%	1V / 100K	60	2.20
PSB0705100MZF	10.0 \pm 20%	1V / 100K	75	2.00
PSB0705120MZF	12.0 \pm 20%	1V / 100K	85	1.90
PSB0705150LZF	15.0 \pm 15%	1V / 100K	90	1.50
PSB0705180LZF	18.0 \pm 15%	1V / 100K	100	1.40
PSB0705220LZF	22.0 \pm 15%	1V / 100K	120	1.30
PSB0705270LZF	27.0 \pm 15%	1V / 100K	150	1.20
PSB0705330LZF	33.0 \pm 15%	1V / 100K	180	1.10
PSB0705390LZF	39.0 \pm 15%	1V / 100K	190	1.00
PSB0705470LZF	47.0 \pm 15%	1V / 100K	220	0.90
PSB0705560KZF	56.0 \pm 10%	1V / 100K	250	0.85
PSB0705680KZF	68.0 \pm 10%	1V / 100K	270	0.80
PSB0705820KZF	82.0 \pm 10%	1V / 100K	380	0.70
PSB0705101KZF	100.0 \pm 10%	1V / 100K	420	0.65
PSB0705121KZF	120.0 \pm 10%	1V / 100K	520	0.60
PSB0705151KZF	150.0 \pm 10%	1V / 100K	580	0.50
PSB0705181KZF	180.0 \pm 10%	1V / 100K	650	0.45
PSB0705221KZF	220.0 \pm 10%	1V / 100K	880	0.40
PSB0705271KZF	270.0 \pm 10%	1V / 100K	990	0.35
PSB0705331KZF	330.0 \pm 10%	1V / 100K	1100	0.32
PSB0705391KZF	390.0 \pm 10%	1V / 100K	1400	0.30
PSB0705471KZF	470.0 \pm 10%	1V / 100K	1900	0.28
PSB0705561KZF	560.0 \pm 10%	1V / 100K	2200	0.25
PSB0705681KZF	680.0 \pm 10%	1V / 100K	2500	0.22
PSB0705821KZF	820.0 \pm 10%	1V / 100K	2900	0.20
PSB0705102KZF	1000.0 \pm 10%	1V / 100K	4000	0.18



RoHS Compliant

NOTE : Specifications subject to change without notice. Please check our website for latest information.

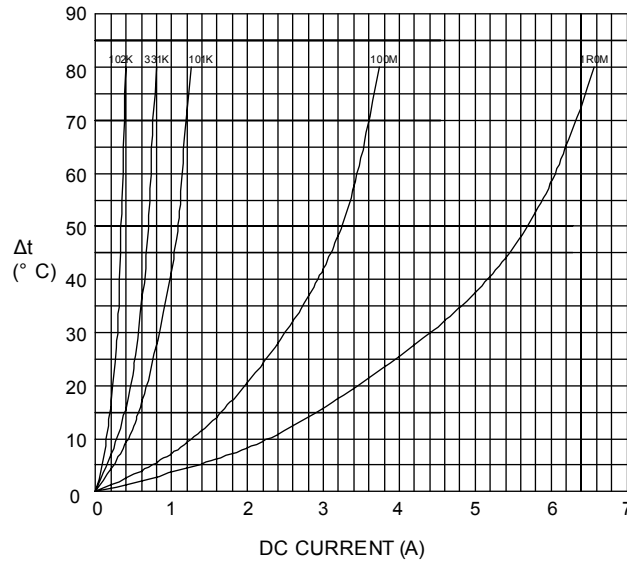
06.01.2015



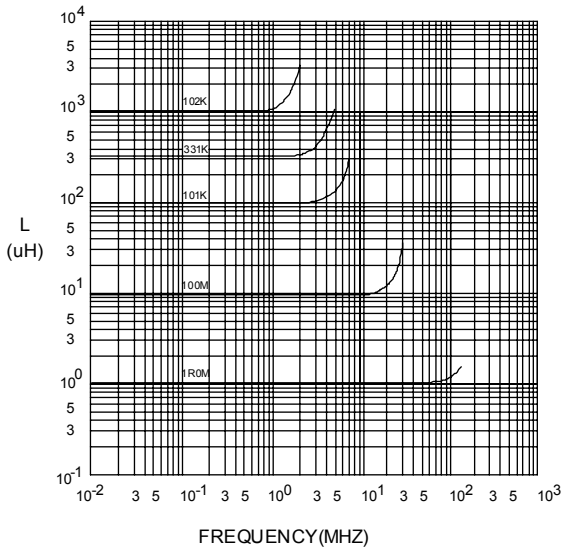
SUPERWORLD ELECTRONICS (S) PTE LTD

7. CHARACTERISTICS CURVES :

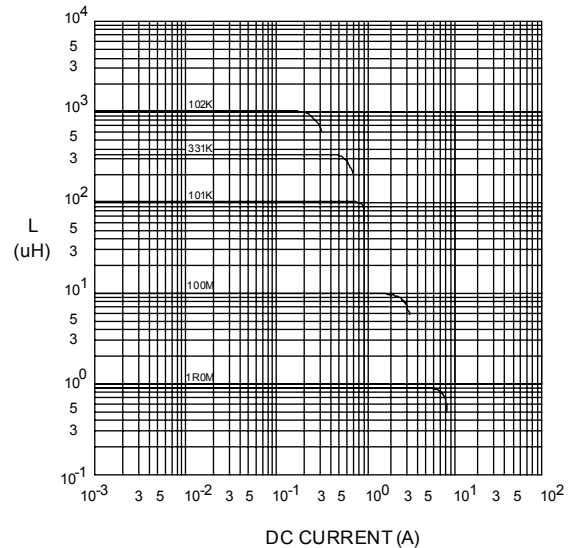
@ TEMP. RISE VS. DC SUPERPOSITION RESPONSE CURVE



@ INDUCTANCE VS. FREQUENCY RESPONSE CURVE



@ INDUCTANCE VS. DC SUPERPOSITION RESPONSE CURVE



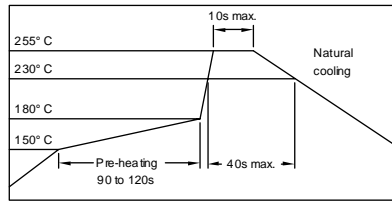
NOTE : Specifications subject to change without notice. Please check our website for latest information.



RoHS Compliant

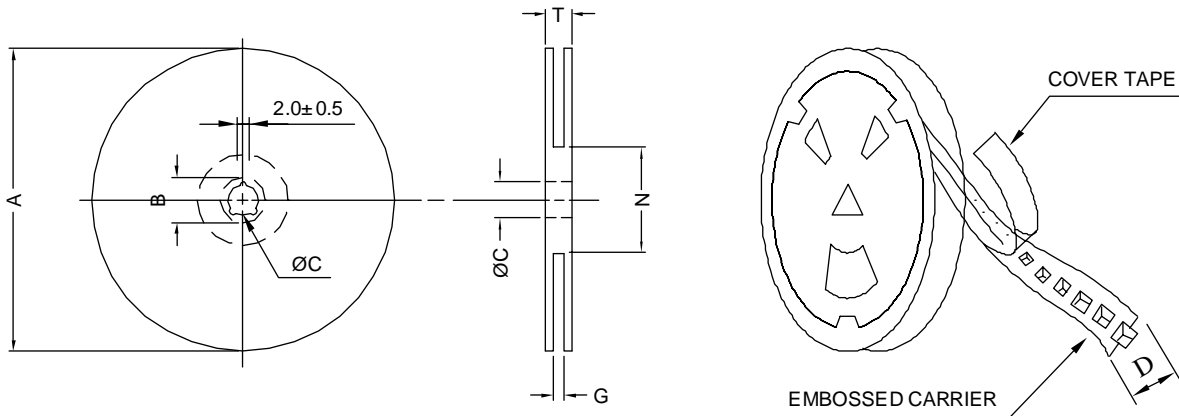


RECOMMENDED SOLDERING CONDITIONS REFLOW SOLDERINGS

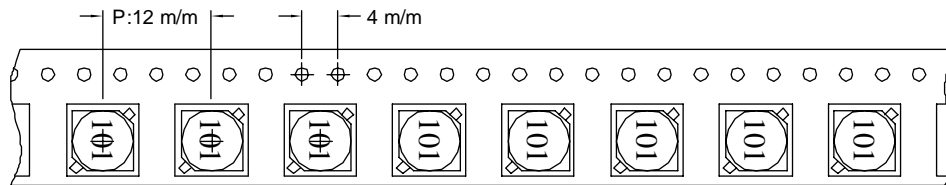


8. PACKAGING INFORMATION :

(1) CONFIGURATION



* CARRIER TAPE WIDTH : D



(2) DIMENSIONS

Unit:m/m

STYLE	A	B	C	D	G	N	T
13-16	330	21±0.8	13	16	18 ⁺⁰	50 ⁻⁰	22.4

(3) QTY & G.W. PER PACKAGE

SERIES	INNER : REEL			OUTER : CARTON		
	QTY (PCS)	G.W. (gw)	STYLE	QTY (PCS)	G.W. (Kg)	SIZE (cm)
PSB0705	1000	680	13-16	6000	7.6	38 x 36.5 x 21



RoHS Compliant

NOTE : Specifications subject to change without notice. Please check our website for latest information.

06.01.2015



SUPERWORLD ELECTRONICS (S) PTE LTD