

1. PART NO. EXPRESSION :

PSB 0604 1R2 MZF
 (a) (b) (c) (d)(e)(f)

(a) Series code

(b) Dimension code

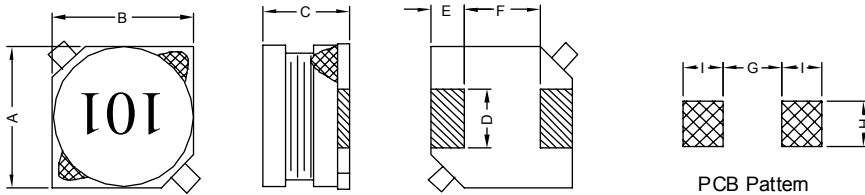
(c) Inductance code : 1R2 = 1.2uH

(d) Tolerance code : K = ± 10%, M = ± 20%

(e) Z : Standard part

(f) F : RoHS Compliant

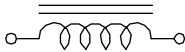
2. CONFIGURATION & DIMENSIONS :



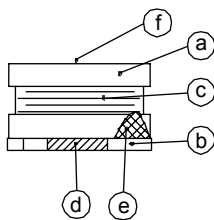
Unit:m/m

A	B	C	D	E	F	G	H	I
6.0±0.3	6.0±0.3	3.9±0.3	2.0±0.2	1.5±0.2	3.0±0.2	2.8 Ref.	2.2 Ref.	1.9 Ref.

3. SCHEMATIC :



4. MATERIALS :



(a) Core

(b) Base

(c) Wire

(d) Terminal

(e) Adhesive

(f) Ink

5. GENERAL SPECIFICATION :

- a) Temp. rise : 40° C Max. at Rated Current.
- b) Rated current : Base on temp. rise & ΔL/L0A = 10% Max.
- c) Operating temp. : -40° C to +85° C
- d) Storage condition (component in its packaging)
 - i) Temperature : -10 to 40° C
 - ii) Humidity : 60%
- e) Resistance to solder heat : 260° C.10 secs



RoHS Compliant

NOTE : Specifications subject to change without notice. Please check our website for latest information.

06.01.2015

6. ELECTRICAL CHARACTERISTICS :

Part No.	Inductance (μ H)	Test Frequency (Hz)	RDC ($m\Omega$) Max.	IDC (A) Max.
PSB06041R2MZF	1.2 \pm 20%	1V / 100K	25	3.00
PSB06041R8MZF	1.8 \pm 20%	1V / 100K	30	2.85
PSB06042R2MZF	2.2 \pm 20%	1V / 100K	35	2.65
PSB06043R3MZF	3.3 \pm 20%	1V / 100K	40	2.35
PSB06044R7MZF	4.7 \pm 20%	1V / 100K	45	2.15
PSB06046R8MZF	6.8 \pm 20%	1V / 100K	60	1.85
PSB0604100MZF	10.0 \pm 20%	1V / 100K	85	1.60
PSB0604120MZF	12.0 \pm 20%	1V / 100K	90	1.50
PSB0604150MZF	15.0 \pm 20%	1V / 100K	110	1.45
PSB0604180MZF	18.0 \pm 20%	1V / 100K	120	1.30
PSB0604220MZF	22.0 \pm 20%	1V / 100K	160	1.25
PSB0604270MZF	27.0 \pm 20%	1V / 100K	190	1.10
PSB0604330KZF	33.0 \pm 10%	1V / 100K	280	1.00
PSB0604390KZF	39.0 \pm 10%	1V / 100K	300	0.90
PSB0604470KZF	47.0 \pm 10%	1V / 100K	330	0.85
PSB0604560KZF	56.0 \pm 10%	1V / 100K	410	0.80
PSB0604680KZF	68.0 \pm 10%	1V / 100K	450	0.70
PSB0604820KZF	82.0 \pm 10%	1V / 100K	600	0.60
PSB0604101KZF	100.0 \pm 10%	1V / 100K	660	0.55
PSB0604121KZF	120.0 \pm 10%	1V / 100K	720	0.50
PSB0604151KZF	150.0 \pm 10%	1V / 100K	1050	0.45
PSB0604181KZF	180.0 \pm 10%	1V / 100K	1150	0.40
PSB0604221KZF	220.0 \pm 10%	1V / 100K	1250	0.35
PSB0604271KZF	270.0 \pm 10%	1V / 100K	1800	0.30
PSB0604331KZF	330.0 \pm 10%	1V / 100K	1950	0.28
PSB0604391KZF	390.0 \pm 10%	1V / 100K	2780	0.25
PSB0604471KZF	470.0 \pm 10%	1V / 100K	2980	0.23
PSB0604561KZF	560.0 \pm 10%	1V / 100K	3300	0.21
PSB0604681KZF	680.0 \pm 10%	1V / 100K	5100	0.20
PSB0604821KZF	820.0 \pm 10%	1V / 100K	5400	0.18
PSB0604102KZF	1000.0 \pm 10%	1V / 100K	6000	0.16



RoHS Compliant

NOTE : Specifications subject to change without notice. Please check our website for latest information.

06.01.2015

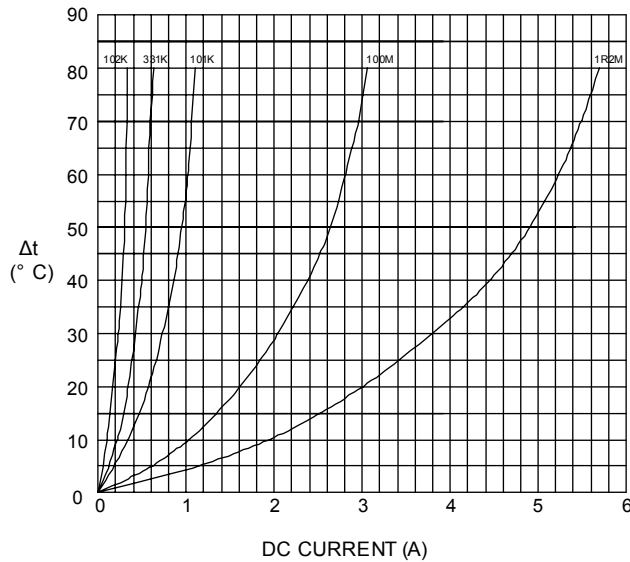


SUPERWORLD ELECTRONICS (S) PTE LTD

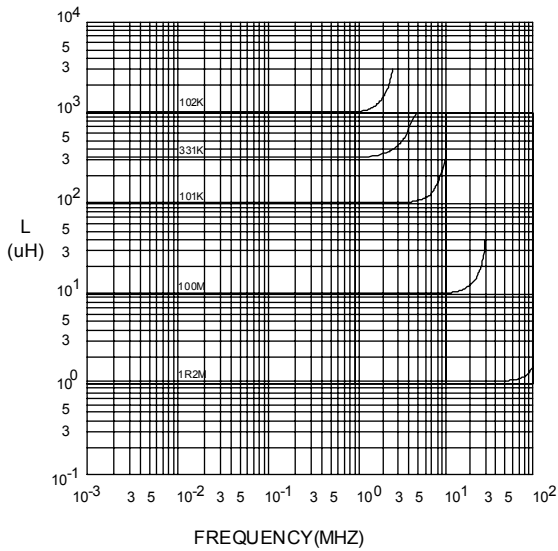
PG. 2

7. CHARACTERISTICS CURVES :

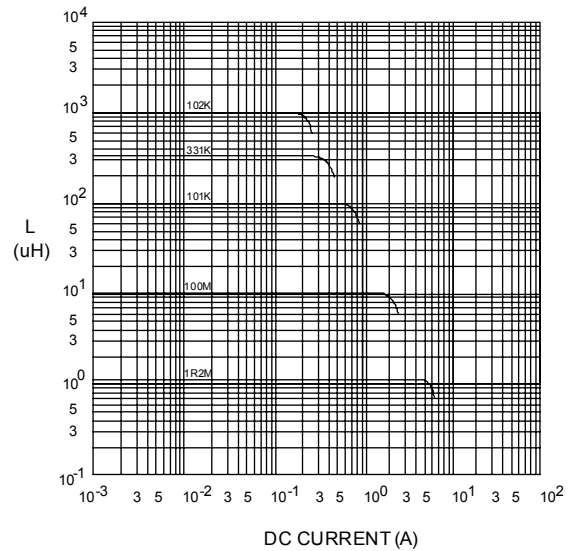
@ TEMP. RISE VS. DC SUPERPOSITION RESPONSE CURVE



@ INDUCTANCE VS. FREQUENCY RESPONSE CURVE



@ INDUCTANCE VS. DC SUPERPOSITION RESPONSE CURVE



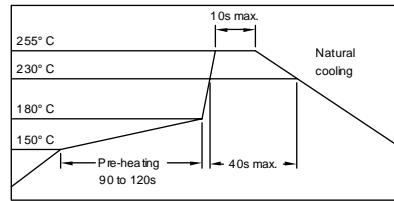
NOTE : Specifications subject to change without notice. Please check our website for latest information.



RoHS Compliant

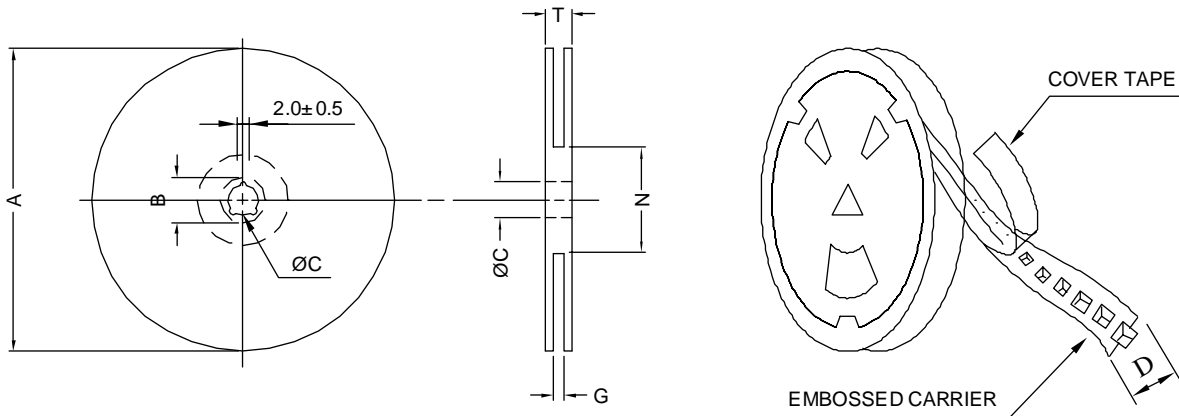


RECOMMENDED SOLDERING CONDITIONS REFLOW SOLDERINGS

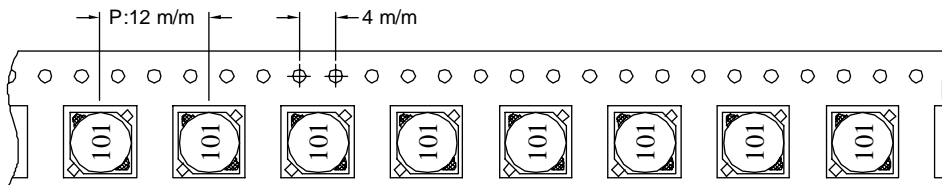


8. PACKAGING INFORMATION :

(1) CONFIGURATION



* CARRIER TAPE WIDTH : D



(2) DIMENSIONS

Unit:m/m

STYLE	A	B	C	D	G	N	T
13-16	330	21±0.8	13	16	18 ⁺⁰	50 ⁻⁰	22.4

(3) QTY & G.W. PER PACKAGE

SERIES	INNER : REEL			OUTER : CARTON		
	QTY (PCS)	G.W. (gw)	STYLE	QTY (PCS)	G.W. (Kg)	SIZE (cm)
PSB0604	1000	580	13-16	6000	7.0	40 x 40 x 24



RoHS Compliant

NOTE : Specifications subject to change without notice. Please check our website for latest information.

06.01.2015



SUPERWORLD ELECTRONICS (S) PTE LTD