

1. PART NO. EXPRESSION :

PDB1511 101 MZF
 (a) (b) (c) (d)(e)(f)

(a) Series code

(b) Dimension code

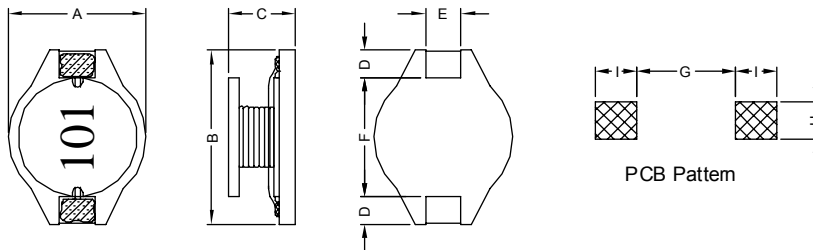
(c) Inductance code : 101 = 100uH

(d) Tolerance code : M = ±20%

(e) Z : Standard part

(f) F : RoHS Compliant

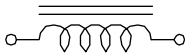
2. CONFIGURATION & DIMENSIONS :



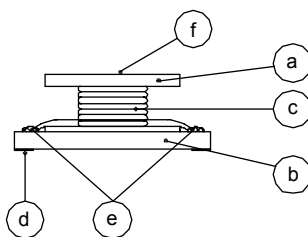
Unit: m/m

A	B	C	D	E	F	G	H	I
15.0±0.3	18.4±0.3	11.5 Max.	2.4±0.2	2.2±0.2	13.3±0.3	12.7 Ref.	2.8 Ref.	3.0 Ref.

3. SCHEMATIC :



4. MATERIALS :



(a) Core

(b) Base

(c) Wire

(d) Terminal

(e) Adhesive

(f) Ink

5. GENERAL SPECIFICATION :

- a) Temp. rise : 40° C Typ. at 1rms.
- b) ΔL/L0A : 10% Typ. at Isat.
- c) Operating temp. : -40° C to +125° C
- d) Storage condition (component in its packaging)
 - i) Temperature : -10 to 40° C
 - ii) Humidity : 60%
- e) Resistance to solder heat : 260° C.10 secs



RoHS Compliant

NOTE : Specifications subject to change without notice. Please check our website for latest information.

14.11.2014



SUPERWORLD ELECTRONICS (S) PTE LTD

6. ELECTRICAL CHARACTERISTICS :

Part No.	Inductance (μ H)	Test Frequency (Hz)	RDC (m Ω) Max.	Isat (A)	Irms (A)
PDB1511470MZF	47.00 \pm 20%	1V/100K	55.0	5.20	3.70
PDB1511680MZF	68.00 \pm 20%	1V/100K	75.0	4.30	3.10
PDB1511101MZF	100.00 \pm 20%	1V/100K	125.0	3.60	2.50
PDB1511151MZF	150.00 \pm 20%	1V/100K	190.0	3.00	2.00
PDB1511221MZF	220.00 \pm 20%	1V/100K	280.0	2.50	1.60
PDB1511331MZF	330.00 \pm 20%	1V/100K	370.0	2.00	1.40
PDB1511471MZF	470.00 \pm 20%	1V/100K	510.0	1.60	1.20
PDB1511681MZF	680.00 \pm 20%	1V/100K	800.0	1.40	1.00
PDB1511102MZF	1000.00 \pm 20%	1V/100K	1100.0	1.15	0.80
PDB1511152MZF	1500.00 \pm 20%	1V/100K	1600.0	0.95	0.60
PDB1511222MZF	2200.00 \pm 20%	1V/100K	2300.0	0.80	0.50
PDB1511332MZF	3300.00 \pm 20%	1V/100K	3600.0	0.65	0.40
PDB1511472MZF	4700.00 \pm 20%	1V/100K	5200.0	0.55	0.35
PDB1511682MZF	6800.00 \pm 20%	1V/100K	7700.0	0.45	0.30
PDB1511103MZF	10000.00 \pm 20%	1V/100K	11000.0	0.38	0.25



RoHS Compliant

NOTE : Specifications subject to change without notice. Please check our website for latest information.

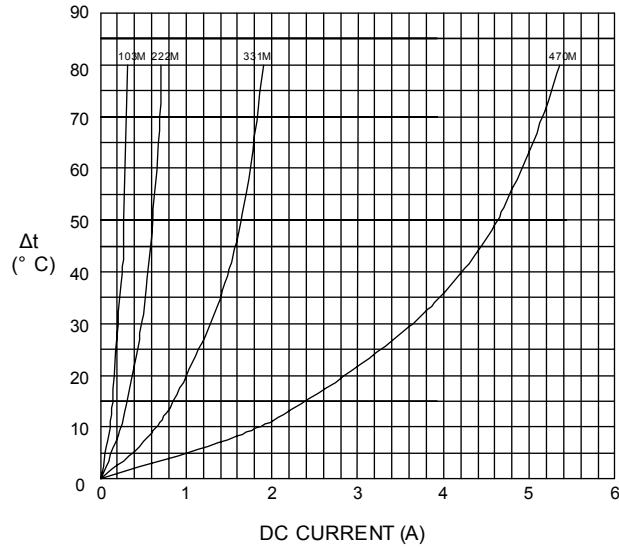
14.11.2014



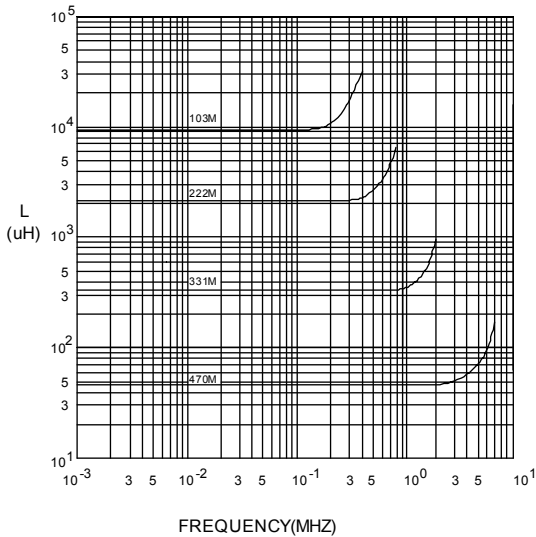
SUPERWORLD ELECTRONICS (S) PTE LTD

7. CHARACTERISTICS CURVES :

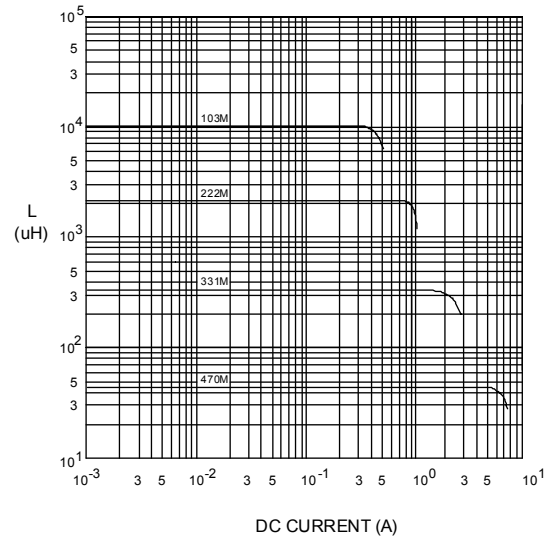
@ TEMP. RISE VS. DC SUPERPOSITION RESPONSE CURVE



@ INDUCTANCE VS. FREQUENCY RESPONSE CURVE



@ INDUCTANCE VS. DC SUPERPOSITION RESPONSE CURVE



RoHS Compliant

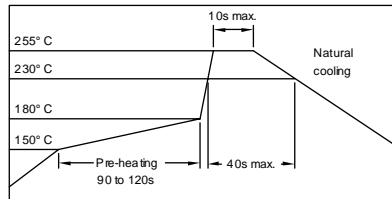
NOTE : Specifications subject to change without notice. Please check our website for latest information.

14.11.2014



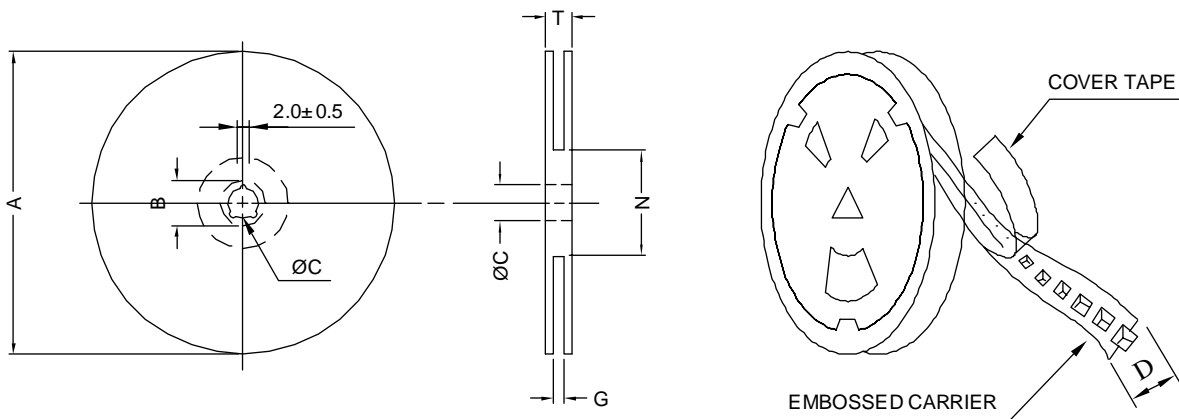
SUPERWORLD ELECTRONICS (S) PTE LTD

RECOMMENDED SOLDERING CONDITIONS REFLOW SOLDERINGS

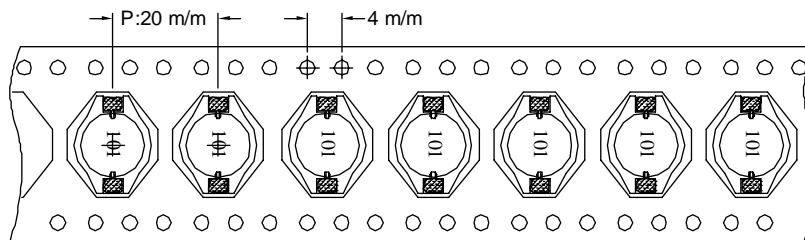


8. PACKAGING INFORMATION :

(1) CONFIGURATION



* CARRIER TAPE WIDTH : D



(2) DIMENSIONS

Unit:m/m

STYLE	A	B	C	D	G	N	T
13-32	330	21±0.8	13±0.5	32	34 ⁺⁰	100 ⁻⁰	38.4

(3) QTY & G.W. PER PACKAGE

SERIES	INNER : REEL			OUTER : CARTON		
	QTY (PCS)	G.W. (gw)	STYLE	QTY (PCS)	G.W. (Kg)	SIZE (cm)
PDB1511	200	1370	13-32	800	9.0	38 x 36.5 x 21



RoHS Compliant

NOTE : Specifications subject to change without notice. Please check our website for latest information.

14.11.2014



SUPERWORLD ELECTRONICS (S) PTE LTD