

### 1. PART NO. EXPRESSION :

P D B 1 5 0 7 1 0 1 M Z F  
(a) (b) (c) (d)(e)(f)

(a) Series code

(b) Dimension code

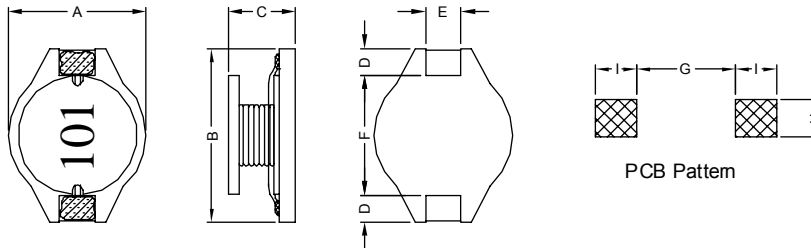
(c) Inductance code : 101 = 100uH

(d) Tolerance code : M = ±20%

(e) Z : Standard part

(f) F : RoHS Compliant

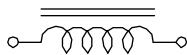
### 2. CONFIGURATION & DIMENSIONS :



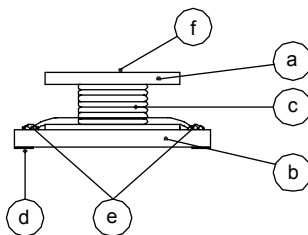
Unit:m/m

A	B	C	D	E	F	G	H	I
15.0±0.3	18.4±0.3	7.0±0.5	2.4±0.2	2.2±0.2	13.3±0.3	12.7 Ref.	2.8 Ref.	3.0 Ref.

### 3. SCHEMATIC :



### 4. MATERIALS :



(a) Core

(b) Base

(c) Wire

(d) Terminal

(e) Adhesive

(f) Ink

### 5. GENERAL SPECIFICATION :

- a) Temp. rise : 40° C Typ. at Rated Current.
- b) Rated current : Base on Temp. Rise & ΔL/L0A = 10% Max.
- c) Operating temp. : -40° C to +85° C
- d) Storage condition (component in its packaging)
  - i) Temperature : -10 to 40° C
  - ii) Humidity : 60%
- e) Resistance to solder heat : 260° C.10 secs



**RoHS Compliant**

NOTE : Specifications subject to change without notice. Please check our website for latest information.

14.11.2014



**SUPERWORLD ELECTRONICS (S) PTE LTD**

## 6. ELECTRICAL CHARACTERISTICS :

Part No.	Inductance ( $\mu$ H)	Q Ref.	Test Frequency ( Hz )	SRF ( MHz ) Typ.	RDC ( m $\Omega$ ) Max.	IDC ( A )
PDB15071R0MZF	1.00 $\pm$ 20%	50	1V/100K	140.0	9	8.60
PDB15071R5MZF	1.50 $\pm$ 20%	50	1V/100K	110.0	12	7.50
PDB15072R2MZF	2.20 $\pm$ 20%	50	1V/100K	75.0	14	7.10
PDB15073R3MZF	3.30 $\pm$ 20%	60	1V/100K	70.0	18	6.20
PDB15075R6MZF	5.60 $\pm$ 20%	50	1V/100K	45.0	20	5.30
PDB1507100MZF	10.00 $\pm$ 20%	30	1V/100K	21.0	31	4.30
PDB1507150MZF	15.00 $\pm$ 20%	30	1V/100K	16.0	36	4.00
PDB1507220MZF	22.00 $\pm$ 20%	20	1V/100K	13.0	47	3.50
PDB1507330MZF	33.00 $\pm$ 20%	30	1V/100K	11.0	66	3.00
PDB1507470MZF	47.00 $\pm$ 20%	20	1V/100K	9.0	86	2.60
PDB1507680MZF	68.00 $\pm$ 20%	30	1V/100K	6.5	130	2.30
PDB1507101MZF	100.00 $\pm$ 20%	20	1V/100K	5.7	190	1.80
PDB1507151MZF	150.00 $\pm$ 20%	25	1V/100K	4.5	250	1.50
PDB1507221MZF	220.00 $\pm$ 20%	25	1V/100K	3.7	380	1.20
PDB1507331MZF	330.00 $\pm$ 20%	30	1V/100K	3.0	560	1.00
PDB1507471MZF	470.00 $\pm$ 20%	30	1V/100K	2.7	850	0.82
PDB1507681MZF	680.00 $\pm$ 20%	35	1V/100K	2.2	1100	0.72
PDB1507102MZF	1000.00 $\pm$ 20%	35	1V/100K	2.0	1800	0.56



RoHS Compliant

NOTE : Specifications subject to change without notice. Please check our website for latest information.

14.11.2014

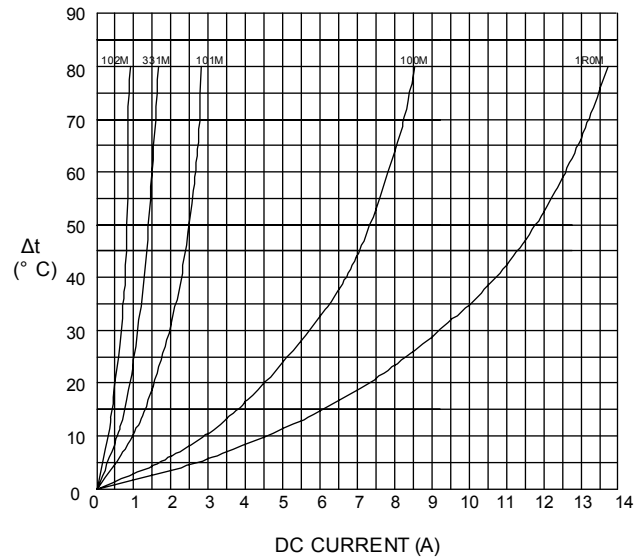


SUPERWORLD ELECTRONICS (S) PTE LTD

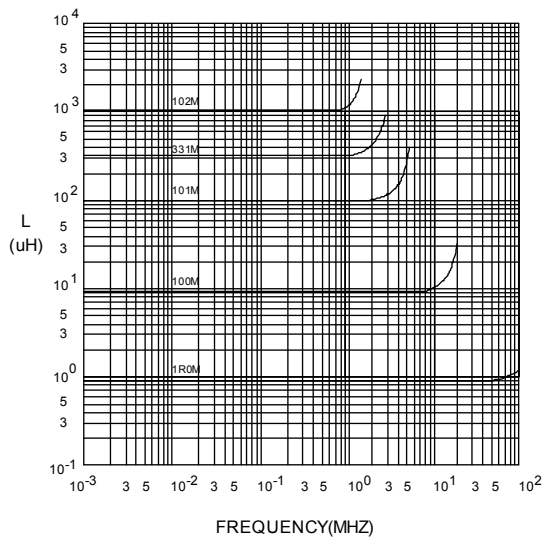
PG. 2

## 7. CHARACTERISTICS CURVES :

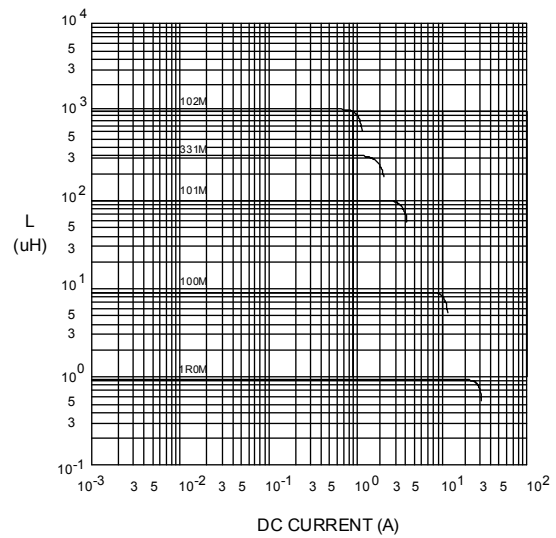
@ TEMP. RISE VS. DC SUPERPOSITION RESPONSE CURVE



@ INDUCTANCE VS. FREQUENCY RESPONSE CURVE



@ INDUCTANCE VS. DC SUPERPOSITION RESPONSE CURVE



NOTE : Specifications subject to change without notice. Please check our website for latest information.



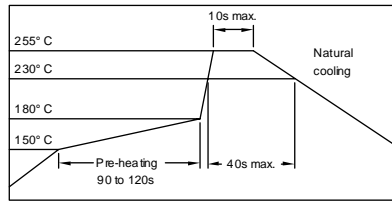
**RoHS Compliant**

14.11.2014



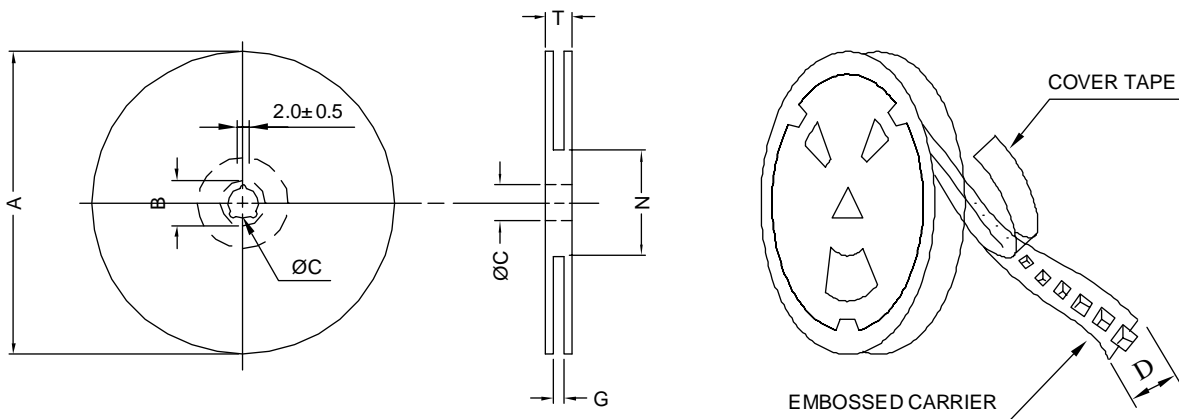
**SUPERWORLD ELECTRONICS (S) PTE LTD**

### RECOMMENDED SOLDERING CONDITIONS REFLOW SOLDERINGS

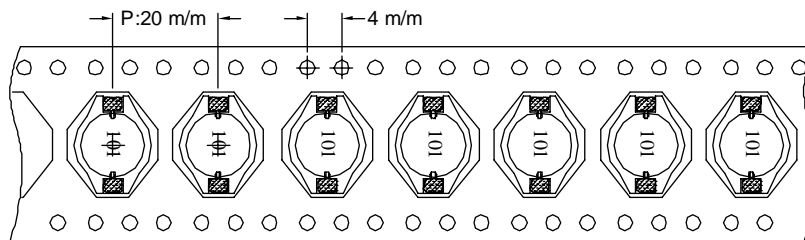


### 8. PACKAGING INFORMATION :

#### ( 1 ) CONFIGURATION



\* CARRIER TAPE WIDTH : D



#### ( 2 ) DIMENSIONS

Unit:m/m

STYLE	A	B	C	D	G	N	T
13-32	330	21±0.8	13±0.5	32	34 <sup>+0</sup>	100 <sup>-0</sup>	38.4

#### ( 3 ) QTY & G.W. PER PACKAGE

SERIES	INNER : REEL			OUTER : CARTON		
	QTY (PCS)	G.W. (gw)	STYLE	QTY (PCS)	G.W. (Kg)	SIZE (cm)
PDB1507	350	1610	13-32	1400	10.0	40 x 20 x 26



**RoHS Compliant**

NOTE : Specifications subject to change without notice. Please check our website for latest information.

14.11.2014



**SUPERWORLD ELECTRONICS (S) PTE LTD**