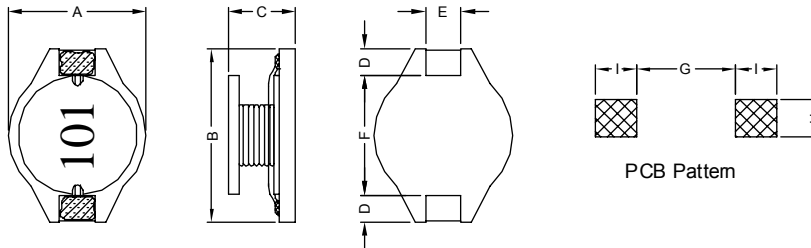


1. PART NO. EXPRESSION :

PDB 1005 101 MZ F
 (a) (b) (c) (d)(e)(f)

- (a) Series code
- (b) Dimension code
- (c) Inductance code : 101 = 100uH
- (d) Tolerance code : M = ± 20%
- (e) Z : Standard part
- (f) F : RoHS Compliant

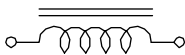
2. CONFIGURATION & DIMENSIONS :



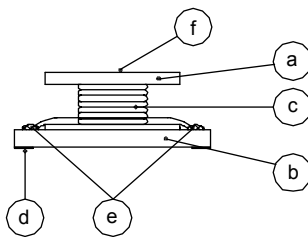
Unit:m/m

A	B	C	D	E	F	G	H	I
10.0±0.2	12.7±0.2	5.0±0.3	2.4±0.2	2.2±0.2	7.6±0.3	7.3 Ref.	2.8 Ref.	3.0 Ref.

3. SCHEMATIC :



4. MATERIALS :



- (a) Core
- (b) Base
- (c) Wire
- (d) Terminal
- (e) Adhesive
- (f) Ink

5. GENERAL SPECIFICATION :

- a) Temp. rise : 40° C Max. at Rated Current.
- b) Rated current : Base on Temp. Rise & ΔL/L0A = 10% Typ.
- c) Operating temp. : -40° C to +85° C
- d) Storage condition (component in its packaging)
 - i) Temperature : -10 to 40° C
 - ii) Humidity : 60%
- e) Resistance to solder heat : 260° C.10 secs



RoHS Compliant

NOTE : Specifications subject to change without notice. Please check our website for latest information.

14.11.2014



SUPERWORLD ELECTRONICS (S) PTE LTD

6. ELECTRICAL CHARACTERISTICS :

Part No.	Inductance (μ H)	Q Ref.	Test Frequency (Hz)	SRF (MHz) Typ.	RDC (m Ω) Max.	IDC (A)
PDB10051R0MZF	1.0 \pm 20%	50	1V / 100K	150.0	9	6.8
PDB10051R5MZF	1.5 \pm 20%	50	1V / 100K	100.0	10	6.4
PDB10052R2MZF	2.2 \pm 20%	45	1V / 100K	85.0	12	6.1
PDB10053R3MZF	3.3 \pm 20%	35	1V / 100K	60.0	15	5.4
PDB10054R7MZF	4.7 \pm 20%	35	1V / 100K	45.0	18	4.8
PDB10056R8MZF	6.8 \pm 20%	35	1V / 100K	35.0	27	4.4
PDB1005100MZF	10.0 \pm 20%	30	1V / 100K	25.0	38	3.9
PDB1005150MZF	15.0 \pm 20%	30	1V / 100K	20.0	46	3.1
PDB1005220MZF	22.0 \pm 20%	25	1V / 100K	18.0	85	2.7
PDB1005330MZF	33.0 \pm 20%	30	1V / 100K	14.0	100	2.1
PDB1005470MZF	47.0 \pm 20%	20	1V / 100K	11.0	140	1.8
PDB1005680MZF	68.0 \pm 20%	35	1V / 100K	10.0	200	1.5
PDB1005101MZF	100.0 \pm 20%	40	1V / 100K	7.0	280	1.3
PDB1005151MZF	150.0 \pm 20%	40	1V / 100K	6.5	400	1.0
PDB1005221MZF	220.0 \pm 20%	40	1V / 100K	5.0	610	0.8
PDB1005331MZF	330.0 \pm 20%	60	1V / 100K	4.0	1020	0.6
PDB1005471MZF	470.0 \pm 20%	50	1V / 100K	3.0	1270	0.5
PDB1005681MZF	680.0 \pm 20%	65	1V / 100K	2.5	2020	0.4
PDB1005102MZF	1000.0 \pm 20%	60	1V / 100K	2.0	3000	0.3



RoHS Compliant

NOTE : Specifications subject to change without notice. Please check our website for latest information.

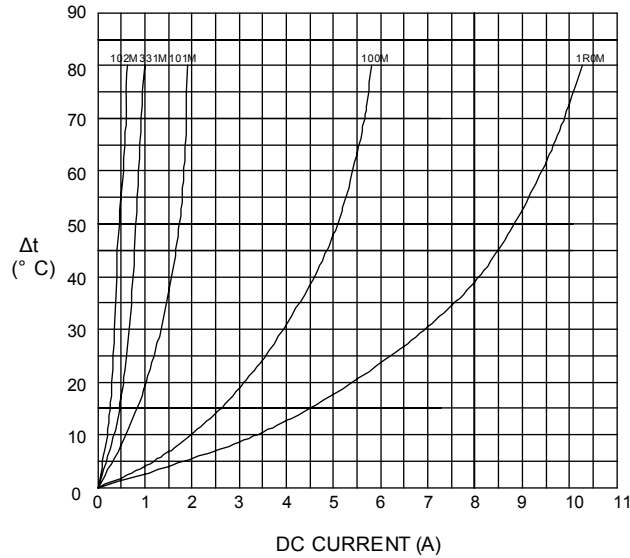
14.11.2014



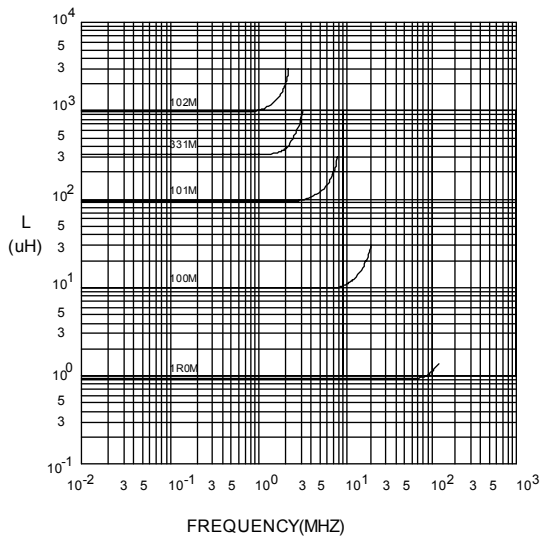
SUPERWORLD ELECTRONICS (S) PTE LTD

7. CHARACTERISTICS CURVES :

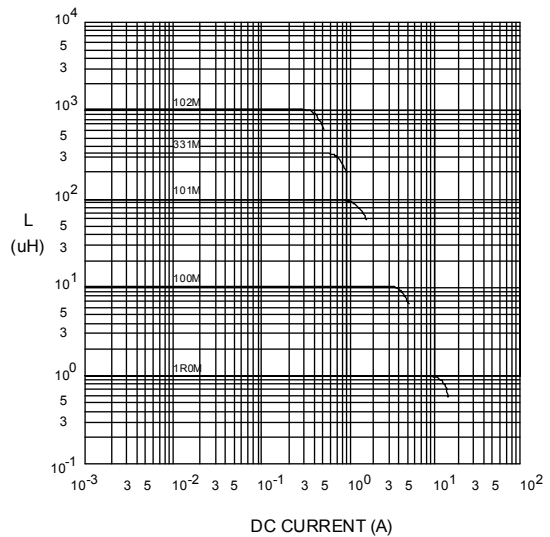
@ TEMP. RISE VS. DC SUPERPOSITION RESPONSE CURVE



@ INDUCTANCE VS. FREQUENCY RESPONSE CURVE



@ INDUCTANCE VS. DC SUPERPOSITION RESPONSE CURVE



NOTE : Specifications subject to change without notice. Please check our website for latest information.



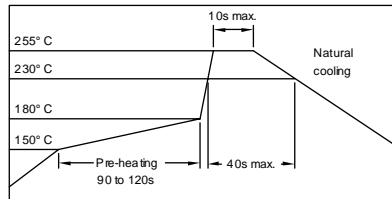
RoHS Compliant

14.11.2014



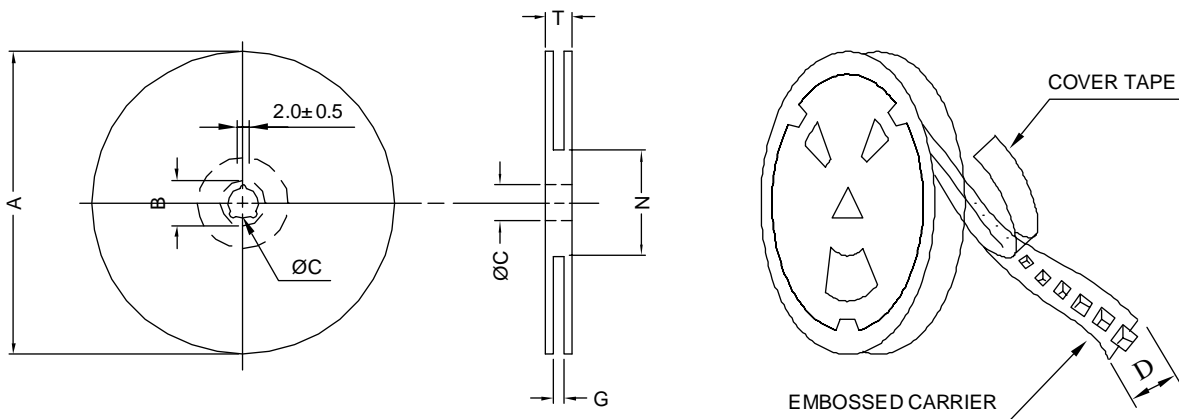
SUPERWORLD ELECTRONICS (S) PTE LTD

RECOMMENDED SOLDERING CONDITIONS REFLOW SOLDERINGS

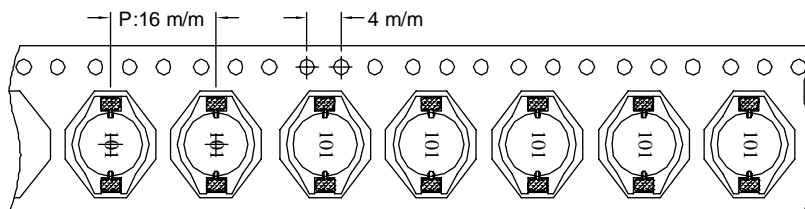


8. PACKAGING INFORMATION :

(1) CONFIGURATION



* CARRIER TAPE WIDTH : D



(2) DIMENSIONS

Unit:m/m

STYLE	A	B	C	D	G	N	T
13-24	330	21±0.8	13±0.5	24	26 ⁺⁰	50 ⁻⁰	30.4

(3) QTY & G.W. PER PACKAGE

SERIES	INNER : REEL			OUTER : CARTON		
	QTY (PCS)	G.W. (gw)	STYLE	QTY (PCS)	G.W. (Kg)	SIZE (cm)
PDB1005	600	1100	13-24	2400	7.90	40 x 40 x 24



RoHS Compliant

NOTE : Specifications subject to change without notice. Please check our website for latest information.

14.11.2014



SUPERWORLD ELECTRONICS (S) PTE LTD