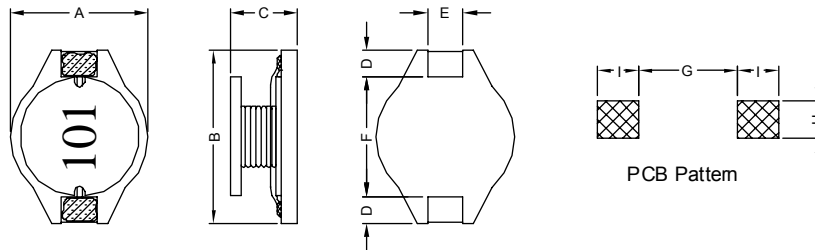


### 1. PART NO. EXPRESSION :

P D B 1 0 0 3 1 0 1 M Z F  
 (a) (b) (c) (d)(e)(f)

- (a) Series code
- (b) Dimension code
- (c) Inductance code : 101 = 100uH
- (d) Tolerance code : M = ±20%
- (e) Z : Standard part
- (f) F : RoHS Compliant

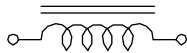
### 2. CONFIGURATION & DIMENSIONS :



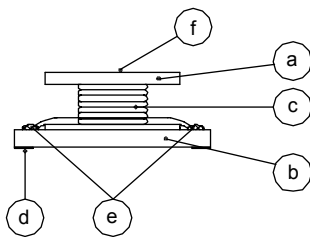
Unit:m/m

A	B	C	D	E	F	G	H	I
10.0±0.2	12.7±0.2	3.0±0.3	2.4±0.2	2.2±0.2	7.6±0.3	7.3 Ref.	2.8 Ref.	3.0 Ref.

### 3. SCHEMATIC :



### 4. MATERIALS :



- (a) Core
- (b) Base
- (c) Wire
- (d) Terminal
- (e) Adhesive
- (f) Ink

### 5. GENERAL SPECIFICATION :

- a) Temp. rise : 30° C Max. at Rated Current.
- b) Rated current : Base on Temp. Rise & ΔL/L0A = 10% Max.
- c) Operating temp. : -40° C to +125° C
- d) Storage condition (component in its packaging)
  - i) Temperature : -10 to 40° C
  - ii) Humidity : 60%
- e) Resistance to solder heat : 260° C.10 secs



**RoHS Compliant**

NOTE : Specifications subject to change without notice. Please check our website for latest information.

14.11.2014

### 6. ELECTRICAL CHARACTERISTICS :

Part No.	Inductance ( $\mu$ H)	Test Frequency (Hz)	SRF (MHz) Typ.	RDC (m $\Omega$ ) Max.	IDC (A)
PDB1003100MZF	10 $\pm$ 20%	1V / 100K	35.0	110	2.00
PDB1003150MZF	15 $\pm$ 20%	1V / 100K	33.0	150	1.50
PDB1003220MZF	22 $\pm$ 20%	1V / 100K	25.0	230	1.30
PDB1003330MZF	33 $\pm$ 20%	1V / 100K	19.0	300	1.10
PDB1003470MZF	47 $\pm$ 20%	1V / 100K	14.0	390	0.80
PDB1003680MZF	68 $\pm$ 20%	1V / 100K	12.0	660	0.70
PDB1003101MZF	100 $\pm$ 20%	1V / 100K	10.0	840	0.60
PDB1003151MZF	150 $\pm$ 20%	1V / 100K	8.0	1200	0.50
PDB1003221MZF	220 $\pm$ 20%	1V / 100K	6.0	1900	0.40
PDB1003331MZF	330 $\pm$ 20%	1V / 100K	5.0	2700	0.30
PDB1003471MZF	470 $\pm$ 20%	1V / 100K	4.0	4000	0.20
PDB1003681MZF	680 $\pm$ 20%	1V / 100K	3.0	5300	0.10
PDB1003102MZF	1000 $\pm$ 20%	1V / 100K	2.5	8400	0.05



**RoHS Compliant**

NOTE : Specifications subject to change without notice. Please check our website for latest information.

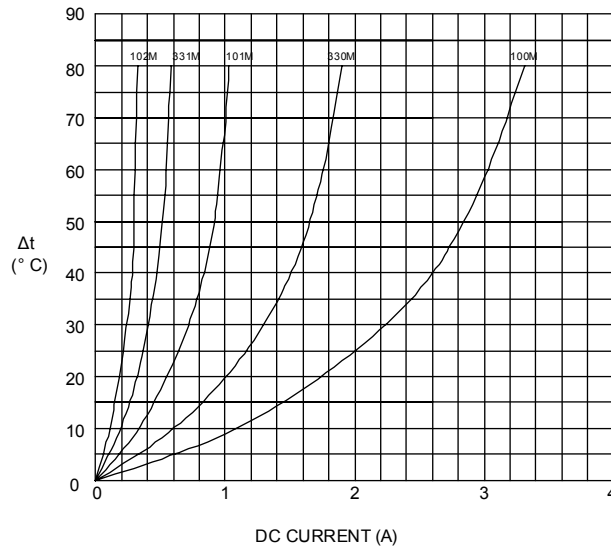
14.11.2014



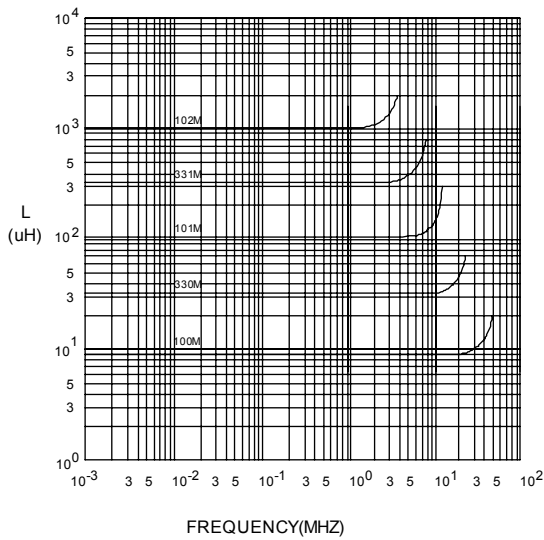
**SUPERWORLD ELECTRONICS (S) PTE LTD**

## 7. CHARACTERISTICS CURVES :

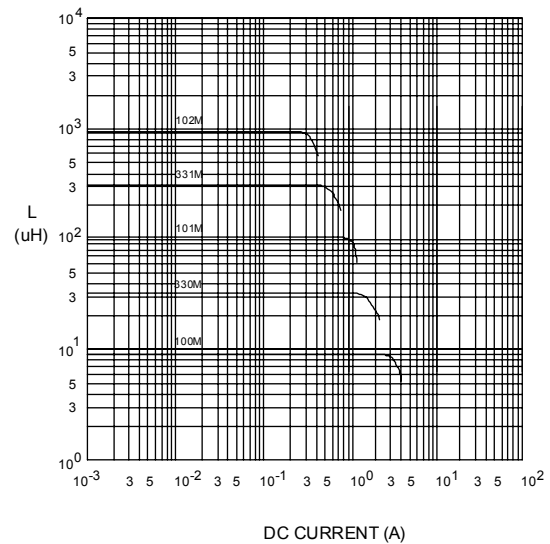
@ TEMP. RISE VS. DC SUPERPOSITION RESPONSE CURVE



@ INDUCTANCE VS. FREQUENCY RESPONSE CURVE



@ INDUCTANCE VS. DC SUPERPOSITION RESPONSE CURVE



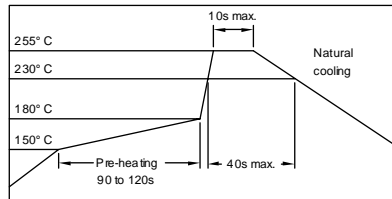
NOTE : Specifications subject to change without notice. Please check our website for latest information.



**RoHS Compliant**

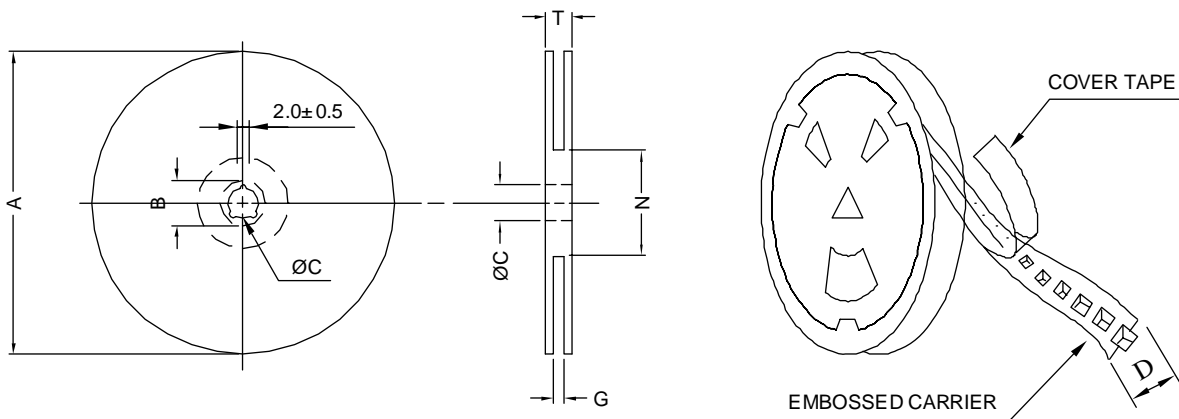


### RECOMMENDED SOLDERING CONDITIONS REFLOW SOLDERINGS

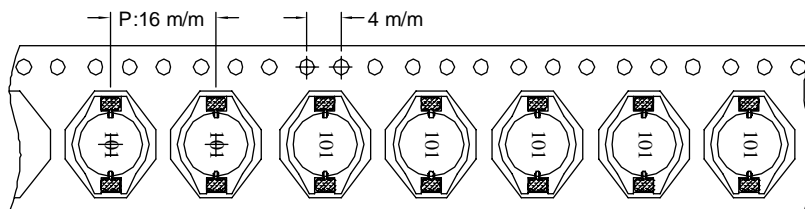


### 8. PACKAGING INFORMATION :

#### ( 1 ) CONFIGURATION



\* CARRIER TAPE WIDTH : D



#### ( 2 ) DIMENSIONS

Unit:m/m

STYLE	A	B	C	D	G	N	T
13-24	330	21±0.8	13±0.5	24	26 <sup>-0</sup>	50 <sup>-0</sup>	30.4

#### ( 3 ) QTY & G.W. PER PACKAGE

SERIES	INNER : REEL			OUTER : CARTON		
	QTY (PCS)	G.W. (gw)	STYLE	QTY (PCS)	G.W. (Kg)	SIZE (cm)
PDB1003	1000	950	13-24	4000	7.30	40 x 40 x 24



**RoHS Compliant**

NOTE : Specifications subject to change without notice. Please check our website for latest information.

14.11.2014



**SUPERWORLD ELECTRONICS (S) PTE LTD**